



New Tracks Modeling Observations

Sponsored by:



Brennan's Model Railroading

<https://www.brennansmodelrr.com/>

(816)-252-4605

Welcome to the September issue of the New Tracks Modeling Observations Newsletter. Updates to our regularly scheduled program segments are also included along with the schedule for September and October (see page **31**). Announcements of new products from vendors and news about trains shows and conventions, and New Tracks Modeling Scholarship news, and its travel about the country are included. As always, send your articles, tips or "tricks" about any aspect of model railroading, or just share a photo or two of a model you are building directly to me at: Martin.Brechbiel@newtracksmodeling.com.

From Jim Kellow, MMR

New Tracks Modeling will be represented at the Sunshine Region - NMRA IRON HORSE October 2024 - Convention. We hope you can join us there!

The Sunshine Region of the NMRA invites you to our new convention home at the Ocala Hilton in beautiful Ocala Florida, known as [The Horse Capital of the World®](#), for Iron Horse 2024!

Enjoy numerous hands-on activities, clinics, op sessions, contests, meet and greet, fellowship and more. The convention will run from 4 pm Thurs. Oct. 10, 2024 to Sat. Oct. 12, 2024, 11 pm (or when the banquet breaks up).

This years' change of venue offers us at least 6 benefits:

- 1) much lower convention cost;
- 2) all activities under one roof;
- 3) longer clinic room availability (we have clinic rooms availability from morning to night);
- 4) opportunity for more fellowship;
- 5) more hands-on clinics and we are delivering more!

and

- 6) Op sessions on-site!

If you've never been to an Op session or are a seasoned pro we will have time to train the newbies and let our pros have at it. If you are new to Op sessions and have been curious to what it's all about then this is the place for you!

We think you will agree the Board has worked hard to bring more to our convention and to increase the quality, while being mindful of the price. Now it's up to you to come out and have some fun and fellowship. Let's celebrate our hobby together!!

For more information: https://www.nmrasunshineregion.org/2024-annual-convention?utm_medium=email&hsenc=p2ANqtz-8F4l8ejG2dfRolmZRv0etT4Ah1VIC01U8W6FPrXsNlu0zXmKfmCrBa_WWoQPTOv2iiExCyvTlzDUdz1iTIqQJqZO0BQ&hsmi=309802643&utm_content=309802643&utm_source=hs_email

Organizational Sponsors for New Tracks Modeling

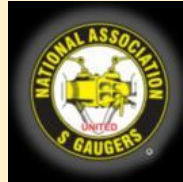
Thanks to our current Sponsors for their financial support to help pay for Shows, Zoom, YouTube, and other related out of pocket costs.



Brennan's Model Railroading
<https://www.brennansmodelrr.com/>
(816)-252-4605



O Scale Central
<https://oscalecentral.com/>



National Association of S Gaugers
<https://www.nasg.org/>



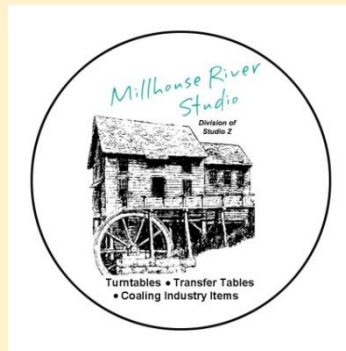
National Capital Trains
<https://nationalcapitaltrains.com/>

Mainline Hobby Supply
<https://mainlinehobby.com/>



American Models
<https://americanmodels.com/>

New Creations Victorian Railroad Buildings, LLC
<https://newcreationsvictorian.com/>



Millhouse River Studio
<https://www.studiozphoto.com/Millhouse.html>

Individual and Company 2024 Donations for our 2025 Scholarships

Individuals

Individual donors in 2024 for our 2025 scholarships are: David Menard, Gerald, Linda Feeney, Jim Kellow MMR, Ft Ron Walters, Bob Charles, MMR, Jeff Zigley, Bob Davidson, Jim Foley, Anonymous, Greg Cassidy, Jamie Bothwell, Michael Gorczynski, Rich Randall, Steve Sherrill, Jeff Jordan, Pat Rivard, and James Koryta

Thank you all so much for the leadership and financial commitment you have made to our young future modeler's education. Your help is greatly appreciated!

Any Company donation is greatly appreciated and will be recognized. Companies that donate \$250 in any annual scholarship cycle will be identified as Brass Donors; Silver Donors will be recognized for a \$500 contribution, Gold Donors for a \$750 contribution and Platinum Donors for a \$1,000 contribution. Donors who contribute at least \$2,000 will be listed as a specific scholarship sponsor. Please contact us at: nttms@newtracksmodeling.com to arrange for your corporate donations. Donate early to maximize your exposure. Remember, your contribution will help the young modelers who are the future of our hobby.

We are most pleased and grateful to announce a 2025 \$1000.00 Platinum Donor:

Platinum Corporate Sponsors



Amherst Railway Society

<https://amherstrail.org/>

I am pleased and very grateful to announce the following 2025 \$250.00 Brass Donors:

Brass Corporate Sponsors



Brennan's Model Railroading
<https://www.brennansmodelrr.com/>
owned by Dennis Brennan



Great Scale Model Train Show
<https://www.gsmts.com/>
produced by Scott Geare



The Model Railroad Resource LLC
<https://sscaleresource.com/WP/>
<https://oscaleresource.com/WP/>
owned by Amy and Dan Dawdy

We Awarded Three New Tracks Modeling Mentoring \$2,000.00 Scholarships on our Live Zoom Show on July 31, 2024

The goal of the New Track Modeling Mentoring Scholarships (NTMMS) is to help model railroaders pursue higher education in the STEAM disciplines. Our scholarships are paid to the student's school and can be used for any fee owed to the school, including room, board, or other school fees (such as items bought at the school's bookstore). For 2024 we awarded three \$2,000.00 scholarships, one of which was provided in conjunction with the PCR Region of the NMRA.

The presentations of the three 2024 scholarships was made by Bob Davidson, Chairman of the New Tracks Modeling Mentoring Scholarship Committee, on the New Tracks Modeling July 31, 2024 Zoom show. If you missed our live zoom show here is a link to a video of the presentations on our New Tracks Modeling YouTube channel (<https://www.youtube.com/watch?v=1NA0SQyxJas>).

The Three Scholarship winners are:

**Ethan Prasad Bernstein, Johns Hopkins University
Bachelors of Engineering**



Overview shot of my 10x12 N-scale CSX Capitol Subdivision layout set in the present day. The industries on the layout are based on actual industries along the line which my Dad and I have railfanned. I make extensive use of 3D-printing and scratchbuilding from a variety of materials. Many vehicles and details on the layout are 3D-printed, such as the cars and autorack ramps at the auto facility in the foreground and the signals on the layout. Since my application last year, I have completed additional ballasting, paved the intermodal yard and added preliminary grass and ballast, and finished track work on the Disney Industrial park which includes four additional industries for more switching opportunities (back right section with the white foam). Parts of the mainline have also been super-elevated to match the 40-50 mph speeds facilitated by the prototype right of way. The layout features primarily through freight with local commuter service and some industrial switching, much like the prototype section of line. Layout progress has been intermittent due to the fact I am away from my parents' basement at college (which is definitely a good thing, but I am grateful for their donation of space to my hobbies), but receives my attention when I am home for breaks.



Latest projects completed over the course of January 2024 for my 3'x8' 1/64 scale farming diorama. From left to right: 3D-printed 1/64 SW1500 based on STL files for a 1/32 model found online; 1/64 3D-printed/scratchbuilt custom cabover Freightliner and 45' trailer (inspired by Optimus Prime from the 'Transformers: Rise of the Beasts' movie) designed by me in CAD software; 1/64 3D-printed Peterbilt 389 (inspired by Optimus Prime from the Transformers 2007 movie) based on STL files for a 1/32 model found online with additional parts designed by me; kitbashed 1/64 triaxle Freightliner sleeper made by combining frame/axle parts from two Ertl trucks and adding 3D-printed and scratchbuilt components; custom 1/64 Ford F-150 pickup truck made from the cab and frame parts of an Ertl truck and a 3D-printed dually truck bed based on designs found online, along with additional scratchbuilt/kitbashed 3D-printed details. All models were painted by me—no decals used, all lettering and striping was done freehand (same is true for the road). The tracks are also fully 3D-printed, again based on 1/32 STL files found online. The telephone poles are made from balsa wood shapes with 3D printed insulators and crossbearers.

Ethan's Essay:

I am honored to have been last year's recipient of the New Tracks Modeling Mentoring Scholarship and appreciate the opportunity to be considered again. My previous essay discussed how model railroading and my love of tiny engineering has guided my interests in STEAM and my current pursuit of a Bachelors of Engineering degree at Johns Hopkins University. As I am blossoming from student to engineer, model railroading has not only been a guide, but also a teacher. Modeling has taught me both physical and emotional skills which have become invaluable in my academic and professional life, promoting my engineering and interpersonal dexterity.

The more obvious lessons to be gained from scale model building are those directly applicable to the hands-on aspects of STEAM. Kit building promotes skills in following instructions, learning the basics of multi-material assembly, and understanding the importance of organization and methodical processes in design and assembly. Scratchbuilding, my preferred past-time, builds on the foundations (double pun intended) of kit- building, except the modeler must now generate the instructions and materials. Though scratch building is initially daunting for some, it appeals to my wild imagination and creativity as it is a way to bring my fantasies into physical being. Those fantasies, however, can be excruciatingly grounded in realism, such as a specific train station or piece of rolling stock from a certain period. Most of my scratchbuilding projects are based on real engineering, involving iteration through the engineering design process beginning with background research to generate an initial design and building approach, followed by assembly, and then testing the finished model to ensure it matches the prototype to my level of satisfaction as prescribed at the beginning of the project. If the model fails to meet my goals, then I reiterate until I achieve the model I desire. The process of model building has made me very practiced in the engineering design process, which has become vital to my life as I train (another pun) to become a professional engineer (not the type that drives trains, though maybe one day...).

Aside from the principles of engineering, model building has also taught me lessons in patience, persistence, time management, and social confidence, the latter I had not ever expected to learn from my love of trains. The process of model building requires much patience, as there can be a lot of waiting and frustration involved, which compounds as a modeler's skills progress, and they begin to tackle increasingly more complicated projects. Persistence fuels patience in the sense that one must have a passion to complete a task to devote time to being patient. Model railroading is commonly deemed a hobby not for the short of time, however a more apt characterization would be a hobby for the passionate, as time can be made to indulge in the hobby, even if only in small amounts. The lessons of persistence and time-management have become increasingly more frequent

as my time (and space) for trains shrinks as my life grows, thus requiring me to find new ways to experience the hobby. Those new ways bring me to the skills I had never imagined I would gain from the hobby but have benefited me most—social confidence and the ability to both learn and teach. Model building involves much learning, both in the form of new skills and research to better understand the prototype being modeled. As I began to venture into the social aspects of the hobby beginning in middle school when I joined Baltimore Area N-Trak, I quickly transitioned from the learner to the master (Star Wars reference), writing articles for the club newsletter about my modeling projects. I was initially unsure at how my articles would be received, but after much positive feedback following my first article, my confidence in sharing and ability to pass on knowledge I have learned accelerated. I have now been published internationally on a recurring basis (NMRA and NRail) and have given modeling clinics both in person and on international NMRA web broadcasts. I am currently on the Standards and Conformance Committee for the NMRA, communicating with manufacturers and modelers to ensure everyone gets the most out of the hobby through regular publication of product reviews in the NMRA Magazine. These experiences have given me confidence in public writing and speaking, along with the ability to network and socialize at a professional level. I now rely on the professionalism learned from the hobby in finding internship and job opportunities, communicating with professors and colleagues in lab environments, and soon in my applications for graduate school to further my understanding in STEAM. I even use my skills in educating others to mentor high school students interested in STEAM about the engineering design process and the skills I have learned which help me in becoming a successful engineer.

Brock Marion Durham, The Citadel Civil Engineering



Brock's Essay:

Would you ever let go of something that you sincerely love and that captivates you so much that you lost track of time? My deep love for trains all began when I was little while playing with my first engine, Thomas the Tank engine. Soon, I started collecting more of the Thomas engines and accessories until my early collection was very large.

When my parents realized how much I was truly fascinated by trains, they started to expose me to other real railroads, like Savannah Georgia Roundhouse, Strasburg railroad in Pennsylvania, and Yosemite Mountain Sugar Pine Railroad. I am always on the hunt to see more trains, and railways, and build models.

Being from a small ocean town, there were no railroading clubs. It was hard finding anyone my age who had the same passion I did, but I found other clubs and hobbies to push my creative mind. I continued modeling by myself through my childhood and teen years, and when I get the chance to go home I still do.

As I became older, my original Thomas the Tanks engine model became too simplistic for me. Over the years I have learned to design the plan for the layout, build its electrical system, and make the landscape and infrastructure from scratch. To build a successful layout, I had to learn to have patience, attention to detail, and art.

One day, a family friend asked me if I could build a model layout for a Hospice exhibit for Christmas, to which I answered yes with no hesitation. I built a “winter-wonderland” with a small village with a small forest. I was young, so it definitely was rough around the edges, but still looked good. I then built another one the next Christmas.

After asking my parents for years to let me build a model train table, they finally let me, but it had to be small. So I built it in our upstairs living room, only about 8x6 feet. Just like the Hospice layouts, I made it snowy, but this time I used snow powder to get more detail. I wired the houses to be on and included a better forest, village, freight yard, and tunnel.

The next big project I had was a functioning O-scale turntable. I knew I could buy one, but I wanted to build a remote-controlled one instead. So I used scrap wood I found, popsicle sticks, glue, motors, and paint to make my very own turntable. I designed all the electrical components with the motors, control panel, and all the track terminals so it work works with both legacy and conventional O-scale engines. It worked very well, better than I expected. I hope I can use this in my future dream layout. The turntable is my Model 1 for the pictures.

While building the turntable, I had a side project of Sierra Valley #3, which was featured in Back to the Future 3. Lionel didn't make a model of it, so I had to make it from scratch. I first got an old cheap Polar Express and used the motor and wheels. I built the new boiler, cab, funnel, and everything else. I also bought a little O scale DeLorean to have the train push the time machine up to 88 mph.

Railroading has also taught me a great deal about history and the impact new advances can have. The railroad industry accomplished so many engineering feats making hard-to-reach areas accessible, resulting in our country's quick expansion.

One of my favorite railroads is the Oceanic Railroad running to Key West. Hundreds of engineers and builders said it was impossible, but Henry Flagler proved it was possible and built 106 miles of track over the ocean to Key West. I desperately wanted a model engine for this railroad, Florida East Coast, however, no model train company made any. So I made my own. I first found the engine I was modeling and found a close engine to it with a different paint job. I had to move the light and bell to get the model accurate after much time with painting, gluing, and crafting. I had finally completed my model of Florida East Coast's 153. I later added a new sound system that sounded much better.

The biggest project I have is a live steam engine, measuring about 7 feet long. I found this locomotive at an antique store and bought it for \$500. I had to dismantle everything, clean, and create new parts to get the engine running. After a few months of work, the engine was finally working. I didn't expect this little 6-and-a-half gauge engine to have so much power. I have yet to run it on an actual railroad, but I have set it on some rollers to watch the pistons spin the wheels around. This is my Model 2 for the picture. While model railroading is a great hobby and a way to escape into a different world, it also teaches and exposes me to many things I would normally not know or do. I can learn about civil engineering, design and construction, and history, and appreciate what new advances can do for our civilization.

Railroading and modeling help me to escape reality, because of the deep history, the great detail, and the endless possibilities. This matters to me because rerouting has been my favorite hobby ever since I was little. It helps me relieve stress when I need and to escape reality to a much smaller world; a world of model railroading.

The Pacific Coast Region of the NMRA contributed \$2,000 and therefore is listed as a specific scholarship sponsor for one of the 2024 scholarship awards. **New Tracks Modeling Mentoring Scholarship sponsored by the Pacific Coast Region, NMRA.** The PCR selected Robert Daniel Winter for their award.

Robert Daniel Winter, University of Washington Mechanical Engineering



Robert's Essay:

I was first introduced to model trains when I was around five years old, when my grandpa brought over a few pieces of track and rolling stock that he had picked up at a recent swap meet. My dad set up a small circle on the dining table, and I drove the trains around it for hours. Over the next few years the layout grew to a double oval on the table, converted to DCC, and I joined my first model train club. Initially, model railroading's impact on my education was pretty general.

Throughout elementary school, my parents used the trains as an incentive for me to do well; whenever I aced a math test or scored well on an essay I'd be rewarded with a new freight car, and if I kept up my performance for the whole semester, I'd get a new passenger car for my Amtrak set. Eventually, we got our hands on a small, half-finished, L-shaped layout to get the tracks off of the table (which my mom was very happy about). On that layout I learned about track laying and switch wiring from building new sidings and set up a very rudimentary operations system. We then joined an On30 modular group and built two modules from scratch, and from them I learned about creating dirt and grass, as well as carving a river bed. From these experiences I learned that I really enjoyed creating things, and model railroading allowed me to do just that.

Studying these models helped me gain knowledge of electrical systems and mechanics, allowing me to catch onto those topics faster than my classmates, and helped define my interests in school. In my sophomore year I took AP Physics 1 and discovered my passion for learning how things work. I began to observe more analytically, breaking complex systems down to learning how and why each part works. With the release of the video game Railroads Online! I was immersed in a whole community of people involved in steam preservation, and I took that opportunity to go back and give myself a deeper and more complete understanding of these little models--and their historical counterparts--that I had been captivated by for so long. Learning more about steam engines led me to become fascinated by all manner of mechanical systems, and I began attempting to re-create them in video games, as a way to experiment and really understand how they work.

Up until just a few months ago, I had no idea what I wanted to do after high school. I hadn't put much thought into it, and whenever someone asked I would just say, "I don't know...something with math, probably," as it had been one of my best subjects. Model railroading had prepared me for many options; kit building and wiring track teaches some principles of electrical and civil engineering, painting and weathering teaches art as well as science, and operating teaches logistics and the value of thinking ahead. However, once I looked back at my performance in math and science, my love for creating new things, and my fascination with mechanical systems, it was an easy decision. With the help of this scholarship, I will be able to continue following my passion and furthering my education as a Mechanical Engineering student at the University of Washington.

Congratulations to Our Three Scholarship Awardees

These three model railroaders, as well as all the other applicants, that unfortunately we could not financially help this year are true future leaders of our great Model Railroad hobby. Thank you all for applying for our scholarships. We hope you will apply again next year. Believe me we will certainly try to raise sufficient funds to help more deserving applicants next year. Best of everything in your future careers!

Individuals and Companies whose 2023 contributions made possible these 2024 Scholarships.

We want to thank all the individuals and companies who donated in 2023 to our Scholarship Program and particularly the viewers whose donations of \$80.00 or less helped us match the Anonymous Donor's Special Challenge Grant of \$1,000. We greatly appreciate everyone's leadership and commitment to our young modeler's education exhibited by their financial donations.

Thank you to all the donors, both individual modelers, Model Manufacturers and Companies, who made these scholarships possible. Thanks to all the young model railroad applicants who are pursuing STEAM programs who applied for our scholarships. We wish we could provide help to everyone who applied and maybe in the future our model railroading community makes that happen. We hope so. We can't think of anything better than the current model railroad community supporting the educational pursuits of our young model railroaders.

Individual Donors

Rick Barton, Greg Cassidy, George Sebastian-Coleman, Bob Davidson, Jim Kellow, David Vaughn, Gary Kirby, LocoFi, Hank Primas, Ronald Przygodzki, Stuart Rankin, Travis Summit, Ronald Walters, Jeff Zibley, Sherri Johnson, Edward O'Rourke, Chris Coarse, Earl Hackett, John Stockton, Kenneth Amos, Jr., Jack Dziadul, Phil Edholm, Michael Gorczynski, Bernard Offley, Pat Rivard, Christopher Gleason, Art Carlson, Daniel Brewer, Greg Warth, Gary Shurgold, Steven Provencher, Rich Randall, Kirk and Barbara Bucher, Dylan Lambert, and our Anonymous donor.

Corporate Donors in 2023

We are pleased that the Pacific Coast Region of the NMRA contributed \$2,000 and therefore is listed as a specific scholarship sponsor for one of the 2024 scholarships. (Insert their Logo and website). The name of their Specific Scholarship was the **New Tracks Modeling Mentoring Scholarship sponsored by the Pacific Coast Region, NMRA**. The PCR selected Robert Daniel Winter for their award.

In addition we had four Corporate **BRASS** donors who helped make our 2024 scholarship awards possible by their donations:

New Creations Victorian Railroad Buildings, LLC Owned by Alan Rogers

<https://newcreationsvictorian.com/>



Brennan's Model Railroading owned by Dennis Brennan
<https://www.brennansmodelrr.com/>

Great Scale Motel Train Show (GSMTS) produced by Scott Geare

<https://www.gsmts.com/>



The Model Railroad Resource LLC owned by Dan and Amy Dawdy

<https://sscaleresource.com/WP/>

<https://oscaleresource.com/WP/>

The Model Railroad Resource LLC
 407 E. Chippewa St. Dwight, IL 60420
 815-274-8809 or 815-584-1577
info@modelrailroadresource.com

Thank you for the leadership and commitment to our young future modeler's education, exhibited by these Companies and Organizations.

Regularly Scheduled Segments that you can see weekly on New Tracks Modeling

Scratchbuilder's Corner

by Martin Brechbiel, MMR (Martin.Brechbiel@newtracksmodeling.com)

Scratchbuilder's Corner presents aspects of scratchbuilding primarily with wood as the medium to build structures and rolling stock, but includes the use of other materials such as styrene, brass, resin, and other casting materials as appropriate.

Intentions here are teach & share techniques and "tricks" that can be adapted into your scratchbuilding projects working from simple projects through those of increasing complexity.

Scratchbuilder's Corner has been on hiatus during the month of August for a much needed rest as well as then to get back in front of building projects for the Wednesday night show in September through the fall of 2024, scratchbuilding more structures and cars are expected to be presented.

Scratchbuilding a Layout - Creating a Scene Based on a Theme

by Tom Farrell (tfarrell60@comcast.net)

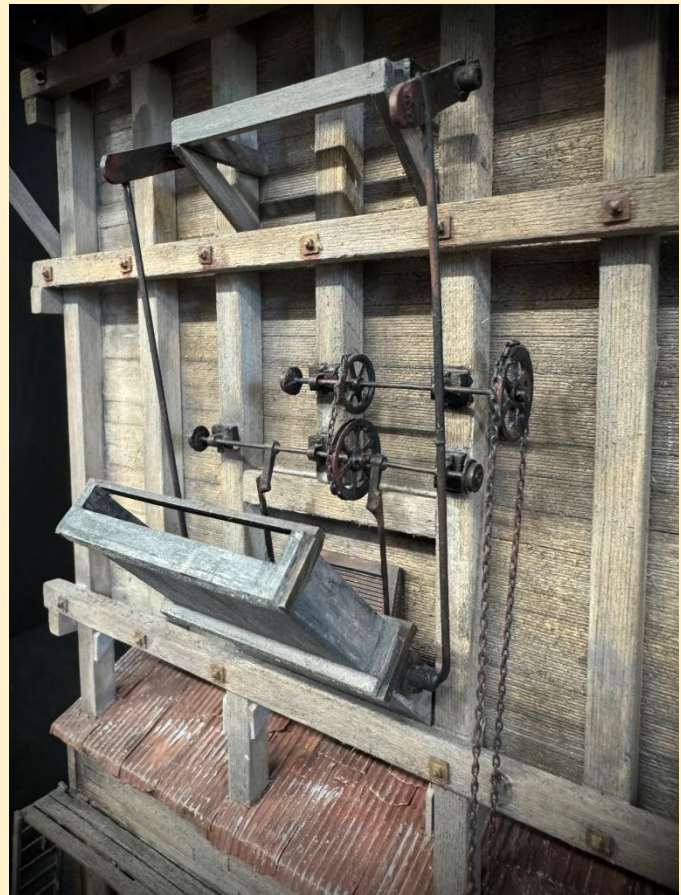
What once felt like a failure has now become my finest scratch build!

Inspired by the iconic Durango Coal Tower, I eagerly began my "Old Gothic Coal Tower" project to add this significant structure to my On30 Rustic Buff & Old Gothic Railroad. Unlike many other builds, this one required detailed planning from the start. I quickly found accurate prototype drawings online, printed them, and dove into the project. I started the finishing process early, applying paint, stain, and color before the assembly was complete. Unfortunately, my color choices were too dark, dull, and unappealing. They didn't reflect the prototype and certainly didn't meet my standards. Disheartened, I set the project aside, intending to revisit it later. But later, it turned into ten years, and the miscolored, unfinished coaling tower sat gathering dust on my shelf of abandoned projects, a constant reminder of a disappointing attempt.

A decade later, I felt a renewed interest in the project and decided it was time to finish what I had started. The first task was finding a finish to bring the tower to life. I carefully mixed water-based stains and acrylics, aiming for a rugged, weathered appearance that would do justice to the original structure. This time, I

was meticulous, layering the paints and weathering the surface until the colors were just right. To my delight, the tower began to transform before my eyes, evolving into something far beyond my initial vision.

Ultimately, the Durango Coal tower became the finest scratch build I've ever completed. The years away from the project gave me the perspective I needed to achieve a finish that now perfectly complements the structure, capturing the realistic tones of a working coal tower. What once



symbolized frustration has now become a testament to the power of perseverance and the rewards of returning to a challenge with fresh eyes.

The "Old Gothic Coal Tower" scratch build will be featured on the August 14, 2024, New Tracks Modeling Live YouTube show. The show airs every Wednesday evening at 7:00 PM ET. All episodes are recorded, segmented, and posted on YouTube for convenient later viewing.

New Tracks Modeling “MY BUILD” 2024

by Chris Course (railrunner130@hotmail.com)

Model railroading is about sharing and the monthly MY BUILD is your opportunity to share and show off your build with the world. Trains, structures, or boats, it doesn't matter. It doesn't have to be your latest build. Heck, it could even be something you found at a yard or estate sale and just thought was neat. Or, maybe if you're stuck on something, need a different technique, or are stumped on how to proceed on a project. This is a good part of the show to ask questions. Please ask. We can help. The August My Build is on YouTube at:

[#####](#)

Every other month we have a “theme.” These are not rigid. If you can find something to share that fits in a category, regardless of being “outside the box”, that is ENCOURAGED!

The schedule and topics for the **2024-2025** My Builds:

- September** Free for all! Anything goes!
- October** Halloween. Haunted houses, abandoned buildings, abandoned railroad cars, scarecrows, derelict engines;
- November** Free for all! Anything goes!
- December** Holiday. Santa, Christmas billboard cars, snow scenery, snow plows, people ice skating, holiday lighting, holiday decorations.
- Jan 2025** Free for all! Anything goes!
- February** Kitbashes, Scratchbuilds;
- March** Free for all! Anything goes!
- April** Automation/Animation. Make it move!
- May** Free for all! Anything goes!
- June** Water. Waterfront buildings, wharves, boats, covered bridges, water tanks, anything water related
- July** Free for all! Anything goes!
- August** Harvest: farm equipment, grain elevators, hopper cars, mills, tractors, agriculture, barns, chicken coops, livestock, cattle pens/ranching, cattle cars, reefer cars;

September Free for all! Anything goes!

October Layouts. Finished, In-progress, Switching layouts, Modules, Dioramas

November Free for all! Anything goes!

December Interiors, Insides of buildings, engine houses, cabooses

New Tracks Modeling will have a Table at the 44th National Narrow Gauge Convention in Pittsburgh, Pa September 11-14, 2024.

Modelers representing New Tracks will get free admission to the show, so have some fun and help us out. If interested email me at: jimkellow@newtracksmodeling.com

Visit the website (<http://www.44nngc.com/>) to obtain all the details about the convention outlined below.

Prototype railroading will be first and foremost: The East Broad Top – the premier 3-foot narrow gauge of the East, the Age of Steam Roundhouse with 22 steam locomotives on display and full functioning backshop facilities, J&L No. 58 – an operating 2' Porter steam locomotive, the Wild Goose Railroad Climax No. 313 – the only known nearly complete Class A in existence, the Waynesburg & Washington Railroad – a 1916 steam locomotive and 1892 Jackson & Sharp coach, and the Pennsylvania Trolley Museum operating restored trolleys over 4 miles of track.

Convention favorites comprising layout tours, model contest, on-site modular layouts, and clinics will be available throughout the week. The expansive vendor rooms will offer products by the finest model railroad manufacturers in the hobby. New to any convention will be the “vendor suites” where vendors can showcase their products in their own room! Railroad museums and other exhibitors also will occupy the vendor space providing information about restoration projects or organization news.

Come to Pittsburgh in 2024 to experience Eastern narrow gauge at its finest! We hope to see you there.

What's to know about The Scales We Model In?

We have had many discussions with modelers who ask, “What is O scale or N scale all about? Does anyone really model in S scale? Can I really scratchbuild a model in N scale?” Your scale of choice may be G, O or O Hi-Rail, S, HO, or N, and there are others yet that modelers choose to build in today. However, we frequently know little about the details of other scales, are possessed of misinformation, or simple mythology.

To discuss this on a regular basis, New Tracks Modeling is running monthly segments on G, O, O Hi-Rail, S, S AF/Hi-Rail, HO, and N scale hosted by knowledgeable talented modelers in each scale. These modelers will try to answer your questions, present information about what is possible to accomplish, and then present what a new modeler entering a scale might need to consider.

The remaining 2024/2025 schedule for “**The Scales that We Model In**” is:

August	7th O, O-HR	14th HO, N	21st S & S HR	28th G
Sept.	4th O, O-HR	11th HO, N	18th S & S HR	25th G
October	2nd O, O-HR	9th HO, N	16th S & S HR	30th G
Nov.	6th O, O-HR	13th HO, N	20th S & S HR	27th G
Dec.	4th O, O-HR	11th HO, N	18th S & S HR	25th G
Jan.	1st O, O-HR	8th HO, N	15th S & S HR	22nd G
Feb.	O, O-HR	HO, N	S & S HR	G
March	O, O-HR	HO, N	S & S HR	G
April	O, O-HR	HO, N	S & S HR	G
May	O, O-HR	HO, N	S & S HR	G
June	O, O-HR	HO, N	S & S HR	G
July	O, O-HR	HO, N	S & S HR	G
August	O, O-HR	HO, N	S & S HR	G
Sept.	O, O-HR	HO, N	S & S HR	G

If you have specific questions you want addressed, or a specific person you would like to see interviewed on a scale segment, please contact the appropriate host. Their email addresses are shown below.

G Scale Modeling hosted by Steve Bittinger (9/25)August 28 See: <https://www.youtube.com/watch?v=MVU4rGJet80>

Sponsored by New Creations Victorian Railroad Buildings LLC

O Scale Modeling hosted by David Schultz (9/4)

Sponsored by O Scale Central

David.Schultz@newtracksmodeling.comAugust 7 See: <https://www.youtube.com/watch?v=RSiLL9H5IVE>**O Gauge Hi-Rail Modeling** hosted by Dennis Brennan (9/4)

Sponsored by Millhouse River Studio

dennis.brennan@newtracksmodeling.comAugust 7 See: https://www.youtube.com/watch?v=NQ_KnL_iegw**S Scale Modeling** hosted by Jamie Bothwell (9/18)

Sponsored by National S Gauge Association (NASG)

jamie.bothwell610@gmail.comAugust 21 See: <https://www.youtube.com/watch?v=9AAHvRm0Ab8>**S Hi-Rail Modeling** hosted by Joel Weber (9/18)

Sponsored by American Models

August 21 See: <https://www.youtube.com/watch?v=D2OxDMM2dsE>**HO scale Modeling** hosted by Gary Shurgold (9/11)

Sponsored by Mainline Hobby Supply

gshurgold@gmail.comAugust 14 See: https://www.youtube.com/watch?v=L_BpSuvDKUk**N Scale Modeling** hosted by Clem Harris (9/11)

Sponsored by National Capital Trains

Clem.Harris@newtracksmodeling.comAugust 14 See: <https://www.youtube.com/watch?v=-mgW07pHo1M>

O Scale Thoughts

My name is William Davis.

I have been interested in railroads ever since my mom gave me an American flyer train set at age 3. I did S and HO as a kid. However I didn't seriously consider O scale until the late 60's. Yes, I saw a lot of it as a kid growing up in Cleveland. LMB was there and Cleveland in the 50's was a hot bed for the hobby. However, it wasn't until I was in the Air Force stationed at Travis AFB that I would go to the East Bay Model Railroad Club in Oakland, CA. There I saw O scale's potential. The clincher was going to a fine scale meeting at the Hobby Shop on School Street also in Oakland where I met the early pioneers of Finescale modeling. These guys were all doing O scale both standard and narrow gauge to the finest standard. Today it's called Proto 48. Leaving there I knew that that was the scale and way I want to build model. After I got married in 1972 I again got actively back into modeling and my first model was a D&RGW high side gondola in On3. I got into custom model building in the 70's and still do some today. However, it was in the 90's that Bill Schaumburg came to a Terrapin Narrow Gauge Society met and saw my Nash-Quad model built from a Bill Roy kit. He asked if I would like to review it for RMC. That was started of me writing reviews and article. That is the main thing I would like to talk about tonight.

We all have learned about our hobby through books and magazine. In O scale over the years there has been some great magazine. Sadly many are now gone. O Scale Railroading, O Scale News, O Gager, Mainline Modeler are a few who are gone but The Gazette, RMC, O Scale Trains and O Scale Resources to name a few that are still here. All have had great O Scale articles.

However, there is one thing that upsets me. What is that? It is how guys will say I don't read the magazine because there is nothing about what I

like in them. Well, a magazine is only as good as the material it receives. Because of that I have seen where magazines have begged for material. So let's get back to you. If the magazine doesn't have material that you like, then send them an article. I know what you are going to say. I can't write and I am no photographer. Well, let me share a story. When I was in school I was the student that never passed English they just passed me along. If you were to tell one of my English teachers that I write article and even had a column in a magazine they would laugh. Never him, but here I am. Jim Kellow told me he told his wife he was going to write an article. She laughed! That was 35 years ago and he is still writing. You don't have to be a professional write to do an article. Neither Jim nor I are trained professionals. Most magazines offer guidelines and will work with you, and edit material so that it is publishable. If Jim and I can do it you can, too! Also an added bonus most magazines will pay for articles.

One more thing: Model manufacturers love to see their products in print. It is like free advertising. Some will even send a kit if they know it will get in an article or review in a magazine. If you built one you really like write an article about it.

At one time O scale was the scale, but now it is third to HO and N scales. However, in my eyes and yours, if you are in O scale you know that it is the OUTSTANDING scale. Many in smaller scales have discovered that and moved up to O scale. The more we can get in print the people will see just how awesome our scale is and want to model in O scale.



Piedmont Junction

October 17-20, 2024

Raleigh - Durham Marriott at Research Triangle Park
4700 Guardian Dr., Durham, NC 27703

Hotel Rate is \$79 USD per night, hotel registration is open NOW! Go to convention website for the link on the "Location/Hotel" tab.

- 23 Layout Tours
- 44 Clinics
- 10 Operations Sessions
- 3 Prototype Tours
- Model Contest, Company Store, Awards Banquet and More!

Website: PiedmontJunction.org

Convention and hotel registration *Now Open*



NER CONVENTION

September 19-22, 2024

Rochester, NY



conventions.nernmra.org



LAKESHORES
DIVISION
Northeastern Region - National Model Railroad Association

Indy O Scale Show 2024



2 Rail O Scale Train Show

Friday September 20, 3:00 to 7:00 PM

Saturday September 21, 9:00 AM to 3:00 PM

La Quinta Inn & Suites Indianapolis South, 465 and Emerson Ave.

O Scale 2 Rail/P48, Narrow Gauge/On30, 3 Rail Scale welcome

Facebook: <https://fb.com/indyoscaleshow>

Website: indyoscaleshow.com

Email: indyoscaleshow@gmail.com

Phone (317) 435-8378

Check back regularly for more details.

✂ PLEASE PRINT LEGIBLY

DETACH AND RETURN THE LOWER SECTION OF THIS FORM WITH YOUR PAYMENT

Name: _____ **Registration** (2 day) \$20.00 \$ 20.00
(Exactly as it would appear on badge) Spouses and children under 18 free
of 32 x 72 tables _____ **@ \$40.00 = \$** _____
 \$50.00 after Aug 1 st

Business: _____ **Number of addl. Registrants @ \$20.00 = \$** _____
(Exactly as it would appear on badge) (List Names below, use back if necessary)

 MAILING ADDRESS **Name:** _____
(Exactly as it would appear on badge)

 CITY STATE ZIP **Name:** _____
(Exactly as it would appear on badge)

Phone: (_____) _____ - _____ **Electrical needed for table(s)?** Yes _____ No _____

E-Mail: _____ **TOTAL AMOUNMT ENCLOSED = \$** _____

Make Checks Payable to Hanson Rail Service, LLC
 Mail to 3202 Saint Paul Street
 Indianapolis, IN 46237
 Email indyoscaleshow@gmail.com

Hotel Information

La Quinta Inn & Suites Indianapolis South

Address: 5120 Victory Dr, Indianapolis, IN 46203

Phone: (317) 783-7751

Amenities:

Complimentary Brightside Breakfast

Complimentary Wireless Internet Access.

Guest laundry facility

Free Parking

24 hour convenience shop

\$104.00 + 17% Tax per night: 1 King or 2 Queen (No Smoking)
ask for Hanson Rail Service rate.
Individual reservation cutoff: 48 hours before check in
Cut off date: September 6, 2024.

Breaking News:

Joint announcement by New Tracks Modeling and O Scale Central.

If you read the sister publication to the O Scale Resource magazine, S Scale Resource, you know that New Tracks Modeling just announced a new S Scale animated series (**see p. 34!**).

Now New Tracks Modeling and OSC are announcing a new O Scale Animated series produced by CatzPaw Innovations LLC and Brennan's Model Railroading. The first model is currently scheduled to be available for preorders at the March 2025 O Scale Meet in Chicago, IL. More details will be available from both the New Tracks Modeling and OSC live Zoom shows and from articles in their publications, and in O Scale Resource magazine.

David Schultz, an OSC member, is the Chairman of the Modelers Advisory Committee for this project to work with the manufacturers to produce the animated scene best suited for modelers in both the O Scale and O Hi-Rail Modeling communities. If you want to join the Advisory Committee, contact David at:

David.Schultz@newtracksmodeling.com

Just want to gossip or give us your opinions: My email is

jimkellow@newtracksmodeling.com



S-FEST 2024

<https://www.wrcresearch.com/SFEST24/>



Fall S-Fest 2024 will take place in St Louis from October 25th through the 27th. This year’s event is being hosted by the American Flyer S Gaugers of the St Louis Area (AFSGSLA). This is the 47th edition of this annual event and will again take place at the Doubletree – Westport conveniently located along I-270 on the west side of St Louis. Reservations for the hotel can be made by calling them directly at 314-434-0100. Registration for the event can be done online by going to the club website at trainweb.org/afsgsla.

This premier S Gauge event includes a swap meet starting Friday afternoon continuing through Saturday afternoon where you can find a wide array of trains and train related merchandise, all in S gauge. During this time there will be clinics on a variety of related subjects as well as a craft session for the spouses. The club modular layout will be on display during the event which also can serve as a test rack for items you might purchase. This event also includes train races, a model contest and then capped off with a banquet, speaker and auction to wrap up the day. Sunday there will be a number of layouts in the area to tour to see the work of local train enthusiasts to learn about and share ideas for your own modelling efforts. Last but not least, we will have meet cars available which are American Models TOFC cars in Missouri Pacific and Chicago and Eastern Illinois livery.

PRELIMINARY SCHEDULE	
Friday October 25	Trading Room Open
8:00 AM to 9:00 PM	Saturday October 26 (cont.)
Registration Desk Open	9:00 Am to 1:00 PM
8:00 A.M. to 2:00 PM	Model Contest Viewing
Move In, Set Up, Display Room	9:00 Am to 1:00 PM
(only open for Vendor and Manufacturer)	Clinics and Spouses Program
10:00 AM to 9:00 PM	1:00 PM to 2:00 PM
Hospitality Room Open	Model Contest judging
2:00 PM to 9:00 PM	3:00 PM to 4:00 PM
Trading Room Open	Train Races and Incline Contest
3:00 PM to 7:00 PM	5:30 to 6:30 PM
Model Contest Entries Accepted	Cocktail Hour
4:00 PM to 8:30 PM	6:30 to ?? PM
Clinics Open	Annual S Fest Banquet
	Annual Post Banquet Auction
Saturday October 26	Sunday October 27
8:00 Am to 3:00 PM	9:00 AM to 1:00 PM
Registration Desk Open	Morning Layout Tours
9:00 AM to 3:00 PM	9:00 AM to 5:00 PM
	All Day Layout Tours

Come join us in St Louis and immerse yourself in the best S gauge experience available. For further information you may contact Joel Weber at weber1b14@gmail.com or call at 630-977-9323.

What do model RC airplane and model railroad hobbyists have in common?

Model RC airplane and Model Railroader hobbyists both share a passion for constructing and operating miniature versions of real-life transportation. Both hobbies involve attention to detail, craftsmanship, and a love for the mechanics behind these modes of transportation. Additionally, hobbyists in both groups often enjoy creating intricate landscapes and settings to enhance their models' realism.

This message has been generated by Nova - download it for free:

<https://novaappai.page.link/2remwd8dXtjzSUB87>

Read below quotes from a recent article I read in the NRHSA publication, Hobby Merchandiser, which goes to all member hobby stores.

What Hobby is the author, Joe Hunt, talking about?
Is it the RC model airplane hobby or the model railroad hobby.

Joe wrote:

“At the heart of this hobby lies the joy of creation.”

“Building ais a labor of love that encompasses a range of skills from woodworking, to, electronics.”

“Each component meticulously assembled and every detail perfected with care.”

“The process is not just about constructing a It’s about channeling creativity, honing craftsmanship and maybe the most important part, problem Solving”

“The final reward is the satisfaction of seeing a vision take ...”

“Perhaps even more enriching than the act of building is the sense of community that permeates through the Hobby”

“Lifelong friendships are formed” “These shared experiences transcend the Barriers of age or background.”

Answer: According to Joe Hunt, it is the RC Model Airplane hobby.

Answer: According to Jim Kellow, MMR it is the Model Railroad hobby.

What do you think? Could the quotes apply to either one?

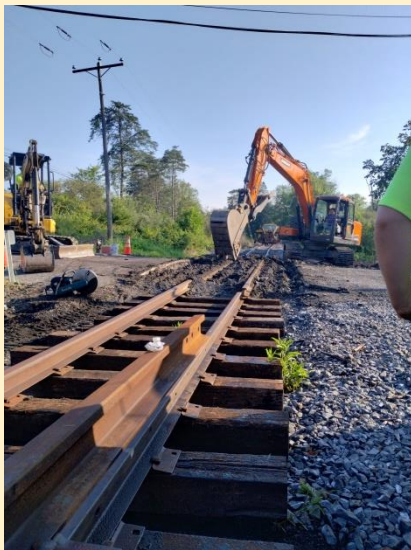
I think we need model railroaders writing articles like Joe Hunt is doing promoting our great hobby: Model Railroading.

Maybe someone is? I have not seen them, have you? If they are out there please let me know: jimkellow@newtracksmodeling.com

Volunteers Working on the Real EBT Railroad

And now the story of the reconstruction of the McCoy Road and the 475 crossings, and some photos of the process.

- McCoy Road was redone on July 29th. The work there was less complicated than the 475 crossing was, since there is no rail to deal with on either side. That said, however, the McCoy Road crossing is in a curve, so that curve had to be built into the new crossing. Careful measurements, taken before the work began, ensured that the new crossing would be in the same place as the old one. However, due to paving of the road (it was interesting to see where the old road surface was, and to see how much the pavement had raised things when the pavement was cut), the new crossing had to be higher than the old one. Once the work was done, old ties were placed in the crossing to allow traffic across it as a temporary measure, since paving of the crossing wasn't scheduled to be done until today.



Removing old 475 rail - Aug 5th
(D. Johnson photo)

Lifting the panel into place - Aug 5th
(G. Tucker photo)

Leveling and tamping 475
- Aug 6th (J. Quinn photo)

- 475: This work took two days, Monday and Tuesday, August 5th and 6th. Henry's careful measurements ensured that the pre-constructed panel track fit well into the rail on either side. Here, too, the new crossing had to be raised, due to paving of the roadway. Timbers were used in the McCoy Road crossing, while rubber strips were installed at 475.

- In both crossings, heavier rail (#100 RB) was used. 39 foot lengths were also used so as to avoid having joints in the crossings. To fit the two rails together (#100 RB and #85 ASCE), compromise joints were used. Although the bars that were available weren't exactly the sizes needed, the ones we were able to get fit well and made up excellent-looking joints.

475 crossing in place
(D. Johnson photo)



Installing rubber strips - Aug 6th
(G. Tucker photo)



475 crossing complete - Aug 6th
(G. Tucker photo)

New Tracks Show Schedule – September/October

(Register at: <https://newtracksmodeling.com/>)

<p>Sept. 4 Welcome & Announcements; Jim Kellow O Scale Modeling with David Schultz O High Rail with Dennis Brennan New Technology you need to Understand to Improve your Modeling with Sherri Johnson Scratchbuilder's Corner 36 with Martin Brechbiel Scratchbuilding his layout with Tom Farrell “What Do You Want to Talk About” with Steve Sherrill Traction modeling with Ed Skuchas</p>	<p>Sept. 11 Welcome & Announcements; Jim Kellow HO Scale Modeling with Ed O'Rourke N Scale Modeling with Clem Harris Joel Weber S Fest St Louis with representative S Scale Animated Scene TBD with David MacLean New Technology you need to Understand to Improve your Modeling with Sherri Johnson Scratchbuilder's Corner 37 with Martin Brechbiel Scratchbuilding his layout with Tom Farrell “What Do You Want to Talk About” with Steve Sherrill</p>
<p>Sept. 18 Welcome & Announcements; Jim Kellow Easy Technique Painting Figures with Jeff Jordan (Pt 1) S scale Modeling with Jamie Bothwell S gauge Modeling hosted by Joel Weber MY BUILD with Chris Coarse and Greg Cassidy</p>	<p>Sept. 25 Welcome & Announcements; Jim Kellow G Scale Modeling with Steve Bittinger Easy Technique Painting Figures with Jeff Jordan (Pt 2) Animating an Athearn rotary snowplow with a DCC decoder with Bernd Fanghanel New Technology you need to Understand to Improve your Modeling with Sherri Johnson Scratchbuilder's Corner 38 with Martin Brechbiel Scratchbuilding his layout with Tom Farrell “What Do You Want to Talk About” with Steve Sherrill Building Old Wood kits going back to the 1960s with Steve Montgomery</p>
<p>Oct. 2 Welcome & Announcements; Jim Kellow O Scale Modeling with David Schultz O High Rail with Dennis Brennan Easy Technique Painting Figures with Jeff Jordan (Pt 3) Animating an Athearn rotary snowplow with a DCC decoder with Bernd Fanghanel Scratchbuilder's Corner 39 with Martin Brechbiel Scratchbuilding his layout with Tom Farrell “What Do You Want to Talk About” with Steve Sherrill Building Old Wood kits going back to the 1960s with Steve Montgomery</p>	<p>Oct. 9 Welcome & Announcements; Jim Kellow HO Scale Modeling with Ed O'Rourke N Scale Modeling with Clem Harris Joel Weber S Fest St Louis with representative S Scale Animated Scene Animating an Athearn rotary snowplow with a DCC decoder with Bernd Fanghanel Scratchbuilder's Corner 40 with Martin Brechbiel Scratchbuilding his layout with Tom Farrell “What Do You Want to Talk About” with Steve Sherrill</p>
<p>Oct. 16 Welcome & Announcements; Jim Kellow S scale Modeling with Jamie Bothwell S gauge Modeling hosted by Joel Weber MY BUILD with Chris Coarse and Greg Cassidy</p>	<p>Oct. 23 Welcome & Announcements; Jim Kellow Kurt Thompson Lifestyle Interview Building in Brass with Bernd Fanghanel</p>
<p>Oct. 30 Welcome & Announcements; Jim Kellow G Scale Modeling with Steve Bittinger What's Going on in OSC. Why O Scale with David Vaughn Building in Brass with Bernd Fanghanel Build Along in G scale of John's Place with Steve Bittinger</p>	<p>Oct. 30 (con't) Build Along in O scale of John's Place with Bill Davis Scratchbuilder's Corner 40 with Martin Brechbiel Scratchbuilding his layout with Tom Farrell “What Do You Want to Talk About” with Steve Sherrill</p>

Coming up in future shows!

These segments provide modelers the opportunity to build a model to not only demonstrate their modeling skills and techniques but to help other modelers improve their skills. These segments may be for one or more shows depending on the details included for the modeling presentation. Viewers can ask questions and learn from experienced modelers various facets of modeling. Upcoming 2024 Show Segments:

Continuing through August into September 2024 Sherri Johnson Technology series
 Sherri Johnson is very well qualified to conduct this series. She has been a Professional Electrical Engineer/Mechanical Engineer working with technology for 45 years which includes using technology in her company, CatzPaw. This series will run through September 25, 2024. Its purpose is to discuss technology in such a way modelers understand what it can do for them, how they can go about taking advantage of it, and understand its future development and impact.

Scheduled subjects are:

Sept 4th →3D Printing: What it is and the types of printers out there
 Sept 11th →3D Printing: FDM Printers
 Sept 25th →3D Printing: Resin Printers

Date tdb →AI: What is it & What can it Do

Date tdb →AI: Continued - showcase it being used

Date tdb →Other: Anything we may missed or mentioned/suggested during the series (possible entry: 3D scanning, chemical etching)

This is a series that will be presented in such a way you will be able to understand and actually use the information presented. Don't miss any of the segments!

Starting September 18, 2024 and continuing for 2 more weeks thereafter, Jeff Jordan will show a new technique for painting our figures that regardless of our skill level will look great. He's calling it, "Figure Painting for People Who Can't Paint Figures" that produces results that are quite presentable.

Here is an example →



Show date → October 23, 2024 → Kurt Thompson with Modeling Lifestyle.

Building Your Dream Layout one Diorama at a time

Starting on November 13, 2024 Matt Woods will begin his series on our Zoom Show with an introduction about his Diorama Modeling and the techniques he uses to create his artistic scenes. Matt is a talented well-known artistic modeler to many On30 modelers. This year you can see his clinic at the National Narrow Gauge Convention in Pittsburg September 11-14 in Pittsburgh, Pa.







New Tracks Master Model Builder Partners with Frenchman River Models on New Tom Yorke Kits

Starting on December 4, 2024, Master Modeler Tom Farrell will begin a partnership where he constructs the newly released O-Scale kits (1/48) designed by Tom Yorke and produced by Frenchman River Model Works. Each release will be featured as a "Watch Me Build" segment for the live New Tracks Modeling YouTube show, aired every Wednesday at 7:00 PM ET.

The series will kick-off with the "Becky Sue's House of Beauty" kit, which Frenchman River Model Works will release in August/September 2024.

Here is a link to the new structure:
<https://frenchmanriver.us16.list-manage.com/track/click?u=d3c64d7e301361726ba4ae1ab&id=cbd3262093&e=b5aaae6bd3>

Future shows on this "Watch me Build" series will be scheduled based on the release dates of new Tom Yorke designs or with a featured model presently offered by Frenchman River Model Works.



New Tracks Modeling announces

“S Scale Animated Scenes”

Kits you can Build -- Scenes you can Create

We are pleased to announce a new “S Scale Animated Scene” concept forwarded through a collaboration of three manufacturers to create a unique, InvisaTrax™ animated core scene that can be displayed in a diorama, or integrated into your S scale or S AF/Hi-Rail model railroad. The three manufacturers involved can be contacted through their websites for details about their products included in this “S Scale Animated Scene” project. To make ordering easy the complete kit components can be ordered by contacting one of the three manufacturers. That manufacturer will coordinate your purchase with the other two manufacturers and arrange to get your complete kit components delivered to you. You only need to make one payment to the manufacturer who will take your order.

American Models: <https://americanmodels.com/>

Email: americanmodels@sbcglobal.net

Telephone: (734) 449-1100



CatzPaw: www.catzpaw.com

Email: info164@catzpaw.com

Telephone: (770) 847-0076



New Creations Victorian Railroad Buildings LLC

Website: <https://newcreationsvictorian.com/>

Email: eauchiche@gmail.com

Telephone: (661) 444-9656



Many of us remember when American Flyer produced operating accessories that provided animation and functionality to create scenes on our model railroads. In fact many of us still buy them, if we can find them, in any reasonable condition. This new scene is not a recreation of an old American Flyer accessory, but rather a new scale 1/64 animated scene using new

technology, and materials. The scene is suitable for use by both S scale, American Flyer, and Hi-Rail model railroaders or any other modeler who creates 1/64 displays or dioramas.

This first scene is of a Transfer/Distribution operation which moves products between rail and truck. The core scene's components include a railroad car, and truck chassis by American Models, a laser-cut Transfer/Distribution structure kit by New Creations Victorian Railroad Buildings LLC, 3D printed figures, equipment, and details, along with relevant InvisaTrax™ animation products by CatzPaw which shows the movement of the cargo between rail and truck. Detailed building instructions to create a unique S scale (1/64) animated scene to enhance your modeling experience will be provided. The best part is all the work of designing the core scene and engineering the technology has been done for you. Your participation is to have modeling fun and experience the thrill of creating your personalized scene.

Plus, everyone gets the benefit of having a personal mentor, so you can improve your modeling skills, as you work live with talented modelers building the scene on New Tracks Modeling weekly Zoom shows or on our YouTube videos to make sure you produce a scene you will be proud to display. The "Build Along" series is scheduled to start in January 2025 and continue on in consecutive shows until the project scene is completed. If you miss any of the live shows, all of the shows are recorded on our New Tracks Modeling YouTube channel for future reference and viewing.

And not to forget the S scale/AF/Hi-Rail collectors, this scene provides a new first scene in a planned series of new collectibles. That's why you may want to get two of the scenes before they are sold out.

The first scene will be available to preorder at the 2024 S Fest St Louis Missouri convention, October 25-27, 2024. For details about the S Fest convention go to their website (include website).

Information concerning how to preorder at the S Fest Convention will be available on each of the manufacturers' websites.

If for some reason you cannot attend the S Fest convention you may also preorder during the month of November from one of the three manufacturers by using the code word contained in the November issue of the New Tracks Modeling Observations Newsletter. Our newsletter is available to all of our website subscribers. For website subscription information please visit our website: newtracksmodeling.com.

If you like this concept or have suggestions for future S Scale Animated Scenes please contact Joel Weber, Chairman of our S Scale Animated Scene Advisory Committee (weber1b14@gmail.com or call at 630-977-9323).

If you just want to talk, gossip, or suggest other new concepts or projects you want New Tracks Modeling to investigate my email is jimkellow@newtracksmodeling.com

By now, many of you have likely heard that Al Judy passed away on August 3, 2024 after a brief illness.

Al was not just a friend; he was an exceptional On30 modeler, a passionate promoter, and a significant supporter of New Tracks Modeling and the broader model railroading community. His absence will be deeply felt.

We were lucky to have Al as a guest on one of my Modeling Lifestyle shows on November 17, 2022. You can watch the episode through this link. <https://www.youtube.com/live/I6IwebVXUQs?si=988c8Nn0J77LydNW>.

He was also scheduled to join my Zoom show on July 3, 2024, but unfortunately, he had to cancel. He had asked me to reschedule him for a later date.”

However Al’s legacy of his outstanding O Scale and Narrow Gauge shows will continue.

It’s not too early to make your plans to attend Al Judy’s Harrisburg, Pa June 2025 Narrow O Scale Show. More details to follow in future articles.

Attend the 2024 S Fest (October 25-27) in St Louis, Missouri, Preorder the New “S Scale Animated Scenes”

Visit our New Tracks Modeling Table to say Hello

Support our New Tracks Modeling Mentoring Scholarship Program.

The Convention Spokesman is Joel Weber and provided the following information.

Fall S-Fest 2024 will take place in St Louis from October 25th through the 27th. This year’s event is being hosted by the American Flyer S Gaugers of the St Louis Area (AFSGSLA). This is the 47th edition of this annual event and will again take place at the Doubletree – Westport conveniently located along I-270 on the west side of St Louis.

Reservations for the hotel can be made by calling them directly at 314-434-0100. Registration for the event can be done online by going to the club website at trainweb.org/afsgsla.

This premier S Scale/Gauge event includes a swap meet starting Friday afternoon continuing through Saturday afternoon where you can find a wide array of trains and train related merchandise, all in S Gauge. During this time there will be clinics on a variety of related subjects as well as a craft session for the spouses. The club modular layout will be on display during the event which also can serve as a test rack for items you might purchase. This event also includes train races, a model contest, and is capped off with a banquet, speaker and auction to wrap up the day. Sunday, there will be a number of layouts in the area to tour to see the work of local train enthusiasts to learn about and share ideas for your own modeling efforts. Last but not least, we will have meet cars available which are American Models TOFC cars in Missouri Pacific

and Chicago and Eastern Illinois livery (**include photo**). The meet cars are suitable for both American Flyer and scale collectors and operators.



Come join us in St Louis and immerse yourself in the best S Scale/Gauge experience available. For further information you may contact Joel Weber at weber1b14@gmail.com or call at 630-977-9323.

VENDOR'S CORNER

440 McCauley Rd.
Conowingo, MD 21918
conowingomodels.com



Conowingo Models, manufacturers of wood craftsman kits, is proud to announce the recent acquisition of Sugar Pine Models.

Conowingo Models has been providing HO and O/On30 structures and rolling stock for more than five years. By acquiring the assets of Sugar Pine Models and folding them into the Conowingo Models name and family of products, we will revive and modernize the Sugar Pine product line using modern technology, such as laser-cut wood and 3D-printed parts.

The goal of Conowingo Models is simple: provide the model railroad community with unique, quality products at an affordable price and provide outstanding customer service. Sugar Pine Models had roughly a dozen kits, which will fit very well into the Conowingo Models product lineup. Like Conowingo Models, Sugar Pine Models included a mix of both historic and fictional structures in their product line.

Our first three kits that will be reintroduced are the redesigned Georgetown Firehouse (formerly kit 1103), Farm Style Water Tank (formerly kit 1111) and the Water and Tool car (formerly kit 106), which appears to have never gotten off the ground as a Sugar Pine kit. All three kits will be available in HO scale.

In addition, the sale also included a few other products, not necessarily Sugar Pine, some of which we haven't discovered yet. We invite you to visit conowingomodels.com today to purchase your redesigned Sugar Pine kits and join us on our adventure to see what comes next...

Photos of the above-mentioned products will be available as the new pilot models are complete.

Chris Coarse
Owner, Conowingo Models



Tenth Avenue House in HO Scale by Conowingo Models

The Tenth Avenue House is one of our first kits and still is a head-turner.



ORDER YOURS TODAY

Rusty Rail

New HO scale release

RRMS-H-08- Here is a great little scene called Slims Boiler Repair. This is a natural scene for a lumber company or sawmill or a business that did boiler repair. There is a lot of detail and you need to check the pictures below to see it all. Minor assembly is required to attach the boilers and the 2 cable reels. All resin casting and measures 7" x 3" x 3" tall and comes unpainted. [Click here to check it out](#)



New O scale releases

RRSP-O-01 -This is a new model of a McCormick-Deering Tractor primed and ready for you to paint and place on your layout. You will receive a exhaust pipe that you have glue on the exhaust manifold. Measures 2 1/4" by 1 1/4" by 1 1/4" all resin casting. [Click here to check it out](#)



RRJP-O-07- The next item is a great little fuel and oil stand that will work with any business and makes a great little scene. Has a lot of different oil and fuel cans surrounding it. Also some wire you can use as hose to connect the fuel drum's valve and coil up to add some more detail. Measures 5/8" by 1 1/4" by 1/18" all resin casting. [Click here to check it out](#)



3D printed parts

Check out our new 3D printed Industrial Air Compressor kits in HO and O scale. May cost a little more but the detail is great.



The LightPick uncoupling tool is now available through MRCS (Seth Neumann's company)

<https://www.modelrailroadcontrolsystems.com/lightpick/>



This is a video about it:

https://drive.google.com/file/d/14Dxt6qMJ2pIFyhyf12md3PQSSZ1BTWHx/view?usp=drive_link



“Henry Hawk Struggles at the Fort Pitt Brewery”

A short story by Thomas P. Farrell, Jr. (Part #4)

Refresh: Henry Hawk's life took an unexpected turn when he was dismissed from his Brakemen's post on the railroad for being drunk on the job. He also lost his wife and two sons shortly thereafter. Once a dedicated railroad worker and family man, Henry's struggle with alcohol cost him the life and career he cherished. The rhythmic clatter of the tracks, the powerful chuff of the engines, and the camaraderie with his fellow workers were all lost to him in a single, regretful moment. Now, instead of guiding locomotives along the iron trail-ways and time with his family, he works in a brewery, surrounded by the constant reminder of his downfall. The pungent aroma of brewing beer serves as a bittersweet reminder of his past mistakes and the life he left behind.

For Henry “Hawk” Hawkins the Great Depression had taken its toll and his struggle was not just financial. He was a recovering alcoholic, clinging to sobriety that could derail his life at any moment. Every morning, he walked the cobblestone streets to the Fort Pitt Brewery, the place that both threatened and saved him. The scent of hops and malt was a constant reminder of the life he had almost lost. Brewing beer was now his craft, his pride, and his paradox. He loved the process, the precision, and the creativity it allowed, but each day was a test of his resolve. His coworkers respected his journey; often exchanging silent nods of encouragement, knowing the immense strength it took for him to stay sober amidst the temptations that surrounded him.

Despite the brewery's challenges, Hawk found solace in the rhythm of work. The Great Depression had left many without jobs, but Fort Pitt Brewery remained a steady source of income for him. The routine helped Hawk focus on something other than his craving. He poured himself into perfecting each batch, ensuring every bottle and barrel met the highest standards. His dedication was unwavering, even as the clinking of glasses and the aroma of freshly brewed beer reminded him of his past indulgence. He had learned to find satisfaction in the creation rather than the consumption, a small victory in his ongoing battle with addiction.

The year was 1930, a hard one marked by economic hardship and personal struggles. As evening fell, Hawk went to the local “Whistlestop Saloon.” Unlike his old self, he no longer sought solace at the bottom of a glass. Instead, he immersed himself in the camaraderie of billiards. The saloon, right off the main line of the RB&OG, was a gathering place for railroad men, fellow workers from the Fort Pitt Brewery, and sometimes the miners from the Monongah Mine. It became a refuge for him. The

clatter of pool balls and the hum of conversations provided a sense of community he desperately needed. Hawk enjoyed the game's challenge, the required strategy, and the friendships it fostered. Once a den of temptation, the saloon had transformed into a place of support. His fellow workers respected his choice not to drink, often ensuring a sarsaparilla awaited him when he arrived.

Henry's heart, however, remained with the Rustic Buff & Old Gothic Railroad. He often found himself reminiscing about the days spent working as a brakeman, sometimes on a fast freight with his brother, Eagle, who continued to thrive as an engineer on the narrow gauge line. Hearing the rumble of a passing train, the sound of its clanging bell or blowing of a train whistle only filled him with a deep longing and regret. Though he appreciated the stability his current job provides, it didn't fulfill him in the way the railroad once did. Every day, Henry grappled with the yearning to return to the tracks, the comfort of his old caboose, and hoping for a chance to reclaim the sense of purpose and passion he once knew.

The past three years working at the brewery passed quickly, everyday a constant reminder of the second chance he had been given. He put forth his best effort each day, hoping to atone for his past mistakes. Despite spending evenings at the Whistle-stop Saloon, Henry had never once taken a drink, determined to prove to him and others that he had changed. One evening, an idea began brewing in his head as he cleaned his equipment at the end of his shift. He knew the brewery owner, "Big John" Hudak, was a good friend of the railroad owner and might be able to help him with a return to the RB&OG. Summoning his courage, perhaps three years in the making, Henry approached Big John and proposed a bold plan: "Sir, I know I've made mistakes, but I've been sober and dedicated for three years. Would you consider writing a letter of recommendation to your friend at the railroad? I long to return to my old job as a brakeman." Big John looked at Henry thoughtfully, recognizing the earnestness and determination in his employee's eyes. He had seen firsthand how Henry had turned his life around, working tirelessly and resisting temptation despite being surrounded by it daily.

After a moment of contemplation, Big John nodded, " Henry, I've watched you prove yourself here and believe in second chances. I'll write that letter for you." With a handshake, the deal was sealed. Henry felt a surge of hope and gratitude as Mr. Hudak penned the recommendation.

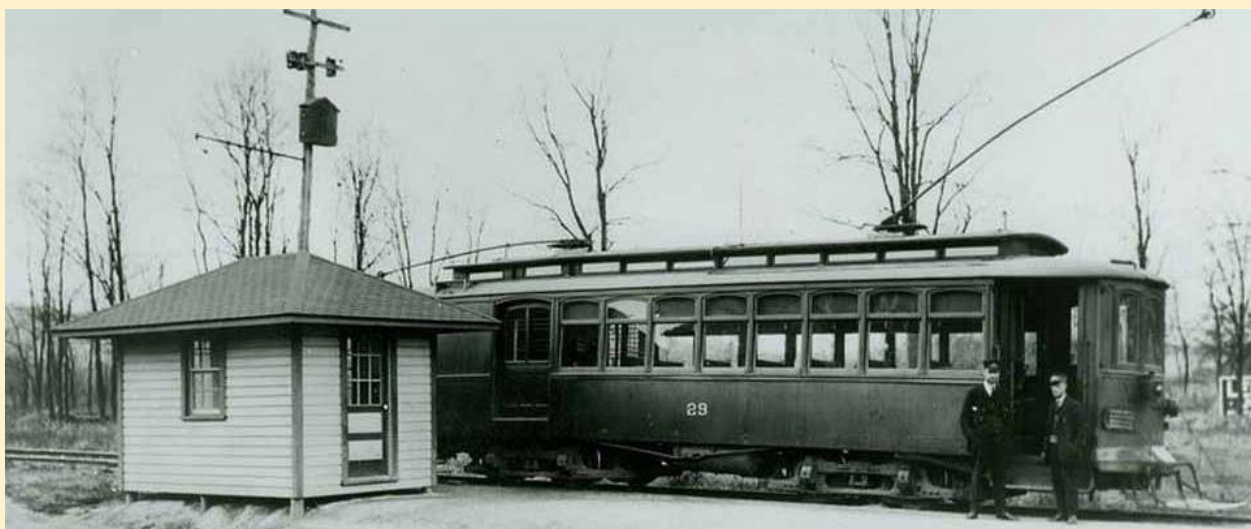
To be continued...

Reaching Applicants for the NMT Scholarship – Getting the Word Out!

Every reader of this newsletter can help get applicants for our scholarships both at their local HS and college levels. Promoting scholarship availability and reaching out to college students can be done through various effective methods. Here are some suggestions:

1. **College Websites:** Contact the administration or career services departments of various colleges and universities, asking them to include your scholarship opportunity on their websites or scholarship portals. This will ensure visibility to a large number of students.
2. **Social Media:** Utilize social media platforms, such as Facebook, Twitter, Instagram, and LinkedIn, to share information about your scholarship. Create visually appealing posts and encourage students to share the information with their peers.
3. **Email Campaigns:** Obtain email lists from colleges and universities, targeting students who fit the eligibility criteria for your scholarship. Send out personalized emails offering information on the scholarship, application process, and deadlines.
4. **College Fairs and Events:** Participate in college fairs and events to directly interact with students. Set up a booth or table where you can provide brochures, answer questions, and raise awareness about your scholarship opportunity.
5. **Campus Ambassadors:** Collaborate with student organizations or campus ambassadors from different colleges to help promote your scholarship. These students can serve as brand ambassadors, spreading the word about your program among their peers.
6. **Press Releases:** Draft and distribute press releases to local and national media outlets to generate wider awareness about your scholarship program. This can attract attention from a broader audience, including potential applicants.
7. **Online Scholarship Databases:** Register your scholarship on popular scholarship search platforms, such as Fastweb, Scholarships.com, or College Board's Scholarship Search. These platforms are frequently used by students searching for financial aid opportunities.

Remember to include clear instructions on how students can apply, including any required documents and deadlines. Make the application process straightforward and easily accessible to maximize student engagement with your scholarship opportunity.



Please Continue to Help Our Next Generation of Model Railroaders by Donating to our 2025 Scholarship Program

We are currently soliciting donations in 2024 for our next year's scholarships and are hopeful we will exceed our 2023 donation level and be able to offer even more than 3 scholarships in 2025. As a registered 501(c)(3) non-profit corporation, your donation to the scholarship is tax deductible as allowed by law. We will be accepting applications for our 2025 Scholarship awards January 1, 2025 through July 1, 2025.

We will announce by December 31, 2024 the amount and number of scholarships available in 2025. The 2025 Scholarship application will be available on our website: newtracksmodeling.com

The New Tracks Mentoring, Inc., grants Scholarships to eligible HS graduates who will be, or are currently pursuing a STEAM (Science, Technology, Engineering, Arts or Math) program at a two-year or four-year college, or university or an accredited technical school. Our scholarships are paid directly to the school in the Student's name and can be used for any fee owed to the school, including room, board, or other school fees such as stuff bought at the school's bookstore. The Officers of the non-profit Corporation are: Jim Kellow, MMR President, Bob Davidson, Vice President, Phil Edholm, Secretary, Tom Farrell, Treasurer, and Jeffery Joyner, Attorney.

The simplest way for individuals or Corporations to donate is to use Zeffy. We chose Zeffy as they insure that 100% of your contribution goes to our scholarship. There are no processing or administration fees. To use Zeffy, please click → [here!](#)



If you wish to make a contribution by check, please make the check payable to: **New Tracks Mentoring, Inc.**, and mail it to:

**New Tracks Modeling Mentoring Scholarship
c/o Tom Farrell
2026 W. Stanton Ct.
Bloomington, IN 47404**

Individual and Company donations so far in 2024 for our 2025 Scholarships

Individual Donors

Individual in 2024 who have donated to our 2025 scholarships currently are: David Menard, Gerald, Linda Feeney, Jim Kellow MMR, Ft Ron Walters, Bob Charles, MMR, Jeff Zigley, Bob Davidson, and Jim Foley.

Thank you all so much for the leadership and financial commitment you have made to our young future modeler's education. Your help is greatly appreciated.

Current Company Donors → [see page 4!](#)

Any Company donation is greatly appreciated and will be recognized. Companies that donate \$250 in any annual scholarship cycle will be identified as Brass Donors; Silver Donors will be recognized for a \$500 contribution, Gold Donors for a \$750 contribution, and Platinum Donors for a \$1,000 contribution. Donors who contribute at least \$2,000 will be listed as a specific scholarship sponsor. Please contact us at: nttms@newtracksmodeling.com to arrange for your corporate donations. Donate early to maximize your exposure. Remember, your contribution will help the young modelers who are the future of our hobby.

Everyone can Help Get The Word Out to potential Donors and Applicants Showing our Scholarship Banner at Events and promote our Scholarship by Word of Mouth.

Bob Davidson generously donated five banners through his company, Exhibits And More, which can be shown at train shows and rail expos across the country.



Each banner is 3' wide and about 7' tall and has a QR code on it to link you directly to our website to get more information including the application to apply. The banners are in a retractable unit that is very easy to ship and set-up. Get one of these for your event; just let Bob Davidson know at: bobdavidson@newtracksmodeling.com

Table top banners are also available as are handouts. They're about 16" wide and 40" tall. I'll be talking about these on one of our Zoom shows. I think they'll be great for smaller events and local shows.

In addition to the banners we

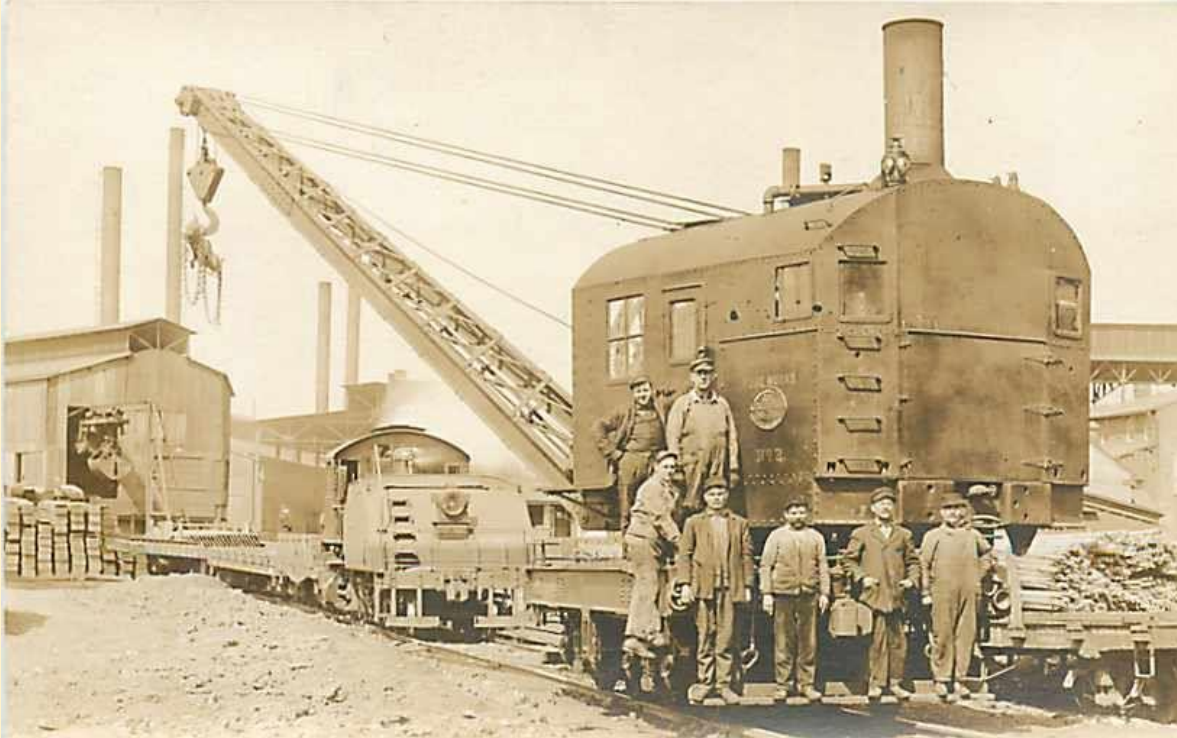
can also provide handouts about the Scholarship program to local events we are not able to attend in person. All you have to do is contact Bob Davidson at: bobdavidson@newtracksmodeling.com

Look for **New Tracks Modeling** at any show or event you attend. We hope to be represented at as many shows as possible in 2024-2025. If you want to take one of our Banners, or help man a table, or have us be a part of your table contact Bob Davidson at: bobdavidson@newtracksmodeling.com

We were at the Amherst Show, the GSMTS in Timonium, and will be at the 2024 O Scale March Meet in Chicago, IL, the National Narrow Gauge Show in Pittsburgh, Pa, Al Judy's two shows, O Scale, and O Narrow Gauge, in Harrisburg, Pa, the NASG 2024 Convention in Harrisburg, Pa, the Piedmont Division of the SER Region of the NMRA show, the Midwest Region of the NMRA show, and various shows and convention out west including the Pacific Coast Region of the NMRA annual convention. In addition we are producing the Virtual Train Show which will be a part of the Joint Physical and Virtual NMRA Pacific Coast Region's Annual Convention. We hope to be able to do more of these Virtual Train Shows jointly with other NMRA Regions, Divisions, and other organizations throughout the United States. Please email me (jimkellow@newtracksmodeling.com) if your organization would like more information about these Virtual Train Shows for your organization.

Remember one of these years your kids or grandkids may benefit from the New Tracks Modeling Mentoring Scholarship program that you helped start. I truly hope so.

Thank you to everyone who helped us display our banners, or pass out our handouts at shows around the country last year. We are currently taking reservations for our banners for 2024/2025. To let us know you are interested in displaying our banner or need handouts for a local event please contact Bob Davidson at: bobdavidson@newtracksmodeling.com



As always, if you just want to talk or comment, or continue this discussion, please contact me at: jimkellow@newtracksmodeling.com
Or, join our Facebook group: New Tracks Modeling. We have over 900 modelers on our Facebook group and hope you join us.

Thanks for reading!

Happy Modeling,
Jim Kellow, MMR