



## New Tracks Modeling Observations

Sponsored by:



Brennan's Model Railroading

<https://www.brennansmodelrr.com/>

(816)-252-4605

Welcome to the October issue of the New Tracks Modeling Observations Newsletter. Updates to our regularly scheduled program segments are also included along with the schedule for September and October (see page **26**). Announcements of new products from vendors and news about trains shows and conventions, and New Tracks Modeling Scholarship news, and its travel about the country are included. As always, send your articles, tips or "tricks" about any aspect of model railroading, or just share a photo or two of a model you are building directly to me at: [Martin.Brechbiel@newtracksmodeling.com](mailto:Martin.Brechbiel@newtracksmodeling.com).

**From Jim Kellow, MMR**

**New Tracks Modeling will be represented at the Sunshine Region - NMRA IRON HORSE October 2024 - Convention. We hope you can join us there!**

The Sunshine Region of the NMRA invites you to our new convention home at the Ocala Hilton in beautiful Ocala Florida, known as [The Horse Capital of the World®](#), for Iron Horse 2024!

Enjoy numerous hands-on activities, clinics, op sessions, contests, meet and greet, fellowship and more. The convention will run from 4 pm Thurs. Oct. 10, 2024 to Sat. Oct. 12, 2024, 11 pm (or when the banquet breaks up).

This years' change of venue offers us at least 6 benefits:

- 1) much lower convention cost;
- 2) all activities under one roof;
- 3) longer clinic room availability (we have clinic rooms availability from morning to night);
- 4) opportunity for more fellowship;
- 5) more hands-on clinics and we are delivering more!

**and**

- 6) Op sessions on-site!

If you've never been to an Op session or are a seasoned pro we will have time to train the newbies and let our pros have at it. If you are new to Op sessions and have been curious to what it's all about then this is the place for you!

We think you will agree the Board has worked hard to bring more to our convention and to increase the quality, while being mindful of the price. Now it's up to you to come out and have some fun and fellowship. Let's celebrate our hobby together!!

For more information: [https://www.nmrasunshineregion.org/2024-annual-convention?utm\\_medium=email&hsenc=p2ANqtz-8F4l8ejG2dfRolmZRv0etT4Ah1VIC01U8W6FPrXsNlu0zXmKfmCrBa\\_WWoQPTOv2iiExCyvTlzDUdz1iTIqQJqZO0BQ&hsmi=309802643&utm\\_content=309802643&utm\\_source=hs\\_email](https://www.nmrasunshineregion.org/2024-annual-convention?utm_medium=email&hsenc=p2ANqtz-8F4l8ejG2dfRolmZRv0etT4Ah1VIC01U8W6FPrXsNlu0zXmKfmCrBa_WWoQPTOv2iiExCyvTlzDUdz1iTIqQJqZO0BQ&hsmi=309802643&utm_content=309802643&utm_source=hs_email)

# Organizational Sponsors for New Tracks Modeling

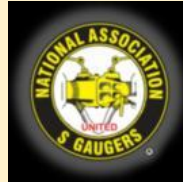
Thanks to our current Sponsors for their financial support to help pay for Shows, Zoom, YouTube, and other related out of pocket costs.



Brennan's Model Railroading  
<https://www.brennansmodelrr.com/>  
(816)-252-4605



O Scale Central  
<https://oscalecentral.com/>



National Association of S Gaugers  
<https://www.nasg.org/>



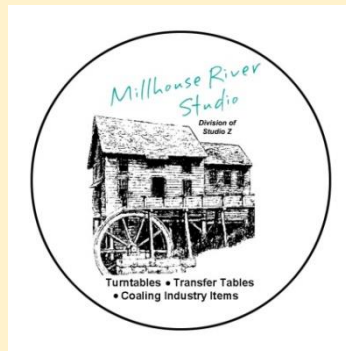
National Capital Trains  
<https://nationalcapitaltrains.com/>

Mainline Hobby Supply  
<https://mainlinehobby.com/>



American Models  
<https://americanmodels.com/>

New Creations Victorian Railroad Buildings, LLC  
<https://newcreationsvictorian.com/>



Millhouse River Studio  
<https://www.studiozphoto.com/Millhouse.html>

## Individual and Company 2024 Donations for our 2025 Scholarships

### Individuals

Individual donors in 2024 for our 2025 scholarships are: David Menard, Gerald, Linda Feeney, Jim Kellow MMR, Ft Ron Walters, Bob Charles, MMR, Jeff Zigley, Bob Davidson, Jim Foley, Anonymous, Greg Cassidy, Jamie Bothwell, Michael Gorczyński, Rich Randall, Steve Sherrill, Jeff Jordan, Pat Rivard, Bill Bunce, and James Koryta

Thank you all so much for the leadership and financial commitment you have made to our young future modeler's education. Your help is greatly appreciated!

Any Company donation is greatly appreciated and will be recognized. Companies that donate \$250 in any annual scholarship cycle will be identified as Brass Donors; Silver Donors will be recognized for a \$500 contribution, Gold Donors for a \$750 contribution and Platinum Donors for a \$1,000 contribution. Donors who contribute at least \$2,000 will be listed as a specific scholarship sponsor. Please contact us at: [nttms@newtracksmodeling.com](mailto:nttms@newtracksmodeling.com) to arrange for your corporate donations. Donate early to maximize your exposure. Remember, your contribution will help the young modelers who are the future of our hobby.

**We are most pleased and grateful to announce a 2025 \$1000.00 Platinum Donor:**

### Platinum Corporate Sponsors



**Amherst Railway Society**

<https://amherstrail.org/>

I am pleased and very grateful to announce the following  
2025 \$250.00 Brass Donors:

**Brass Corporate Sponsors**



Brennan's Model Railroading  
<https://www.brennansmodelrr.com/>  
owned by Dennis Brennan

The Model Railroad Resource LLC  
407 E. Chippewa St. Dwight, IL 60420  
815-274-8809 or 815-584-1577  
info@modelrailroadresource.com

Great Scale Model Train Show  
<https://www.gsmts.com/>  
produced by Scott Geare



The Model Railroad Resource LLC  
<https://sscaleresource.com/WP/>  
<https://oscaleresource.com/WP/>  
owned by Amy and Dan Dawdy

**We Awarded Three New Tracks Modeling Mentoring  
\$2,000.00 Scholarships on our Live Zoom Show on July  
31, 2024**

**The Three Scholarship winners were:**

- Ethan Prasad Bernstein, Johns Hopkins University**
- Brock Marion Durham, The Citadel**
- Robert Daniel Winter, University of Washington**

## Individual Donors

Rick Barton, Greg Cassidy, George Sebastian-Coleman, Bob Davidson, Jim Kellow, David Vaughn, Gary Kirby, LocoFi, Hank Primas, Ronald Przygodzki, Stuart Rankin, Travis Summit, Ronald Walters, Jeff Zibley, Sherri Johnson, Edward O'Rourke, Chris Coarse, Earl Hackett, John Stockton, Kenneth Amos, Jr., Jack Dziadul, Phil Edholm, Michael Gorczynski, Bernard Offley, Pat Rivard, Christopher Gleason, Art Carlson, Daniel Brewer, Greg Warth, Gary Shurgold, Steven Provencher, Rich Randall, Kirk and Barbara Bucher, Dylan Lambert, and our Anonymous donor.

The September 2024 issue of the **Hobby Merchandiser**, the magazine of the National Retail Hobby Stores Association published information about the New Tracks Modeling Mentoring 2024 Scholarship winners and our annual program in their Industry News Section.



### INDUSTRY NEWS

#### NRHSA Expo 2024: Bigger, Better Than Ever!

For independent hobby store owners who want to build their business, there's no better place to be than Las Vegas in September.

The 30th annual edition of the NRHSA Conference and Table Top Expo kicks off Sept. 15-18, 2024, at The Orleans Hotel in Las Vegas.

Six educational tracks are scheduled for Sunday, Sept. 15, the opening day of the conference.

At 1:00 pm-2:30 pm, Monday, Sept. 16, join Gary Barker from the Barker Institute for the NRHSA keynote address, Tools and Techniques For Influential Selling. Barker will share his game-changing approach that can unlock unprecedented success in today's competitive marketplace. His transformative roadmap is backed by tried, tested and proven strategies and insights. It's a paradigm-shifting approach that empowers you to connect, persuade and draw results with unparalleled efficacy.

Don't forget the popular demo sessions: Airplanes, Boats and Cars on Monday, Tuesday and Wednesday. You can get hands-on experience with new products and learn from the experts.

The "Five Minutes to Wow Me" session is back by popular demand on Monday. Exhibitors present their wares in just five minutes to impress the audience of retailers.

Last but certainly not least, the Table Top Expo opens Monday afternoon and runs through the end of the day Wednesday. Over 120 product exhibitors and product lines are set to be on display. Meet up with old friends and build new relationships. Many vendors offer show-only specials that make the trip worthwhile each year. For more details, see the schedule of events and projected exhibitor list in this issue. For more information, visit NRHSA.org.

#### Be Careful With Information On Your Website

An informative "About Us" section may be one of the most-read sections on your website. It helps tell the story of your store and build a relationship with your customers.

It can also give cyber thieves a way to target you, your employees, the store and perhaps other organizations.

With names and smiling photos of employees, and maybe a fun fact or two, cyber thieves can get enough information to get payment or other sensitive information with a phone call. Testimonials on your site or comments on social media pages could expose customers as well.

Called "social engineering," the cyber thieves can call with enough personal information to trick whoever answers the phone. They may impersonate a customer or a vendor. The caller might say they are with an organization calling to renew your membership or a subscription for software.

Kevin Wade, CEO of cybersecurity consulting company IntelSystems, said social engineering is one of the fastest growing industries in the world and even small companies can get hit, losing thousands of dollars. According to Verizon, 60% of businesses that suffer a cyber attack go out of business within six months.

Wade recommends companies review the amount of information they put on their sites, particularly about company leadership and employees, as well as customers and their projects.

#### MRID Moves Annual Breakfast And Awards To Amherst

Due to the various changes with The National Train Show this year, the Model Railroad Industry Division (MRID) of the Hobby Manufacturers Association has decided to move the MRID annual breakfast meeting and the presentation of the Bobby Hall Award

and Hall of Fame Award to the Amherst Railroad Hobby Show in January 2025.

The 2024 recipients of the Bobby Hall Award and Hall of Fame Award will be presented at the annual MRID meeting. John Sacandala, show director, is excited to host the Hall of Fame display and welcomes the MRID to the Amherst show in January 2025.

#### New Tracks Modeling Presents Scholarships

New Tracks Modeling presented its 2024 New Tracks Modeling Mentoring Scholarships to three winners on a Zoom show on July 31.

Bob Davidson, chairman of the New Tracks Modeling Mentoring Scholarship Committee, presented \$2,000 scholarships to college students Robert Winter, Ethan Bernstein and Brock Durham.

The 50(c)(3) Florida Corporation raised sufficient donated funds from the model railroad community in 2023 to offer three \$2,000 scholarships this year, one of which is provided in conjunction with the Pacific Coast Region of the NRMA.

The goal of the New Track Modeling Mentoring Scholarships (NTMMS) is to help high school graduate model railroaders pursue their higher education in a STEAM discipline. The scholarships are paid to the student's school and can be used for any fee owed to the school including room, board, or other school fees (such as supplies bought at the school's bookstore).

#### Homewood Toy & Hobby Celebrates 70 Years

Homewood Toy & Hobby Shop in Birmingham, Alabama, celebrates 70 years and is the oldest store of its kind in the area.

The store opened in 1950 and has been family owned for three generations. They specialize in a diverse range of toys, from classic wooden treasures to the latest trends for all ages.

According to owner Tricia McCain, their knowledgeable staff and a commitment to quality customer service are what set them apart from competitors.

With the largest selection of surface and air RC vehicles in town, Homewood Toy & Hobby also offers enthusiasts in-store repairs on hobby brand vehicles. Moreover, their free gift-wrapping service, available with a \$12 minimum purchase, adds a touch of convenience and charm. The store carries a diverse set of brands, including RC vehicles, model kits, puzzles, building blocks and more.

#### Model Railroad Opens In Botanical Gardens

Nestled in the serene landscape of La Cañada Flintridge, just outside Los Angeles, Descanso Gardens has been beloved for its botanical gardens.

Recently, the attraction has added a delightful new attraction that is captivating visitors of all ages: the Descanso Miniature Railroad.

At the Descanso Railroad, seven little trains run on overhead tracks and past train stations made out of natural materials, said Descanso Gardens Communications Director Jennifer Enrico. "You'll see Grand Central Station, L.A., and then the middle America stations around the country."

The Descanso Mini Railroad is more than just a new attraction; it pays homage to Descanso Gardens' rich history. The original Descanso Train has given rides to visitors since it opened as a seasonal attraction in the 1980s. Passengers straddle cars pulled by a 1/8 scale model of a diesel engine. The train ride has reopened after a 2023 renovation, including an upgrade to be completely electric. Riders take a 4-mph train trip that loops through a seasonal display that lasts six minutes.

(Continued on page 34)

We greatly appreciate the Association's help communicating our scholarships to their Hobby store members!

## Corporate Donors in 2023

We are pleased that the Pacific Coast Region of the NMRA contributed \$2,000 and therefore is listed as a specific scholarship sponsor for one of the 2024 scholarships. (Insert their Logo and website). The name of their Specific Scholarship was the **New Tracks Modeling Mentoring Scholarship sponsored by the Pacific Coast Region, NMRA**. The PCR selected Robert Daniel Winter for their award.

In addition we had four Corporate **BRASS** donors who helped make our 2024 scholarship awards possible by their donations:

**New Creations Victorian Railroad Buildings, LLC Owned by Alan Rogers**

<https://newcreationsvictorian.com/>



**Brennan's Model Railroading owned by Dennis Brennan**  
<https://www.brennansmodelrr.com/>

**Great Scale Motel Train Show (GSMTS) produced by Scott Geare**

<https://www.gsmts.com/>



**The Model Railroad Resource LLC owned by Dan and Amy Dawdy**

<https://sscaleresource.com/WP/>

<https://oscaleresource.com/WP/>

The Model Railroad Resource LLC  
 407 E. Chippewa St. Dwight, IL 60420  
 815-274-8809 or 815-584-1577  
[info@modelrailroadresource.com](mailto:info@modelrailroadresource.com)

Thank you for the leadership and commitment to our young future modeler's education, exhibited by these Companies and Organizations.

# New Tracks Modeling Mentoring Scholarship

## *For Modeling's Future*

We're happy to report continued good news regarding the New Tracks Modeling Mentoring Scholarship! We were recently awarded a \$1,000.00 grant from the Amherst Railway Society, making them our first Platinum level sponsor. We also completed a successful challenge on behalf of an anonymous donor which raised over \$1,000.00. These two items alone funded one scholarship for the 2025-2026 academic year. We also welcome back three Brass level sponsors: Brennan's Model Railroading, The Great Scale Model Train Show and O and S Scale Resource Magazines. Thank you to all of our donors.

On another important note, we are looking for volunteers to join the committee and help us continue to grow the Scholarship program. Specifically, we are looking for:

-Train Show Liaison:

Encourage presence at train shows and coordinate banner / flyer placement

-Train Club Liaison:

Encourage participation by train clubs (both NMRA and private)

-Applicant Liaison:

Develop methods and programs to reach more applicants

None of these positions require much time (maybe an hour a week), but can make a huge difference in keeping the Scholarship program moving ahead. Please consider helping us out.

In just two short years, we have now awarded \$7,000.00 in awards to young modelers who represent the future of our hobby. These students are not only talented modelers, they are all impressive academically and are all involved in their communities. To view the award segment and meet this past year's recipients, please click on this link:

<https://www.youtube.com/live/q4-NP1mixWg?si=GSH0BNb8mCr4L9mr>

If you have any questions, please contact Bob Davidson at [NTMMS@newtracksmodeling.com](mailto:NTMMS@newtracksmodeling.com)



## **Regularly Scheduled Segments that you can see weekly on New Tracks Modeling**

### **Scratchbuilder's Corner**

by Martin Brechbiel, MMR ([Martin.Brechbiel@newtracksmodeling.com](mailto:Martin.Brechbiel@newtracksmodeling.com))

Scratchbuilder's Corner presents aspects of scratchbuilding primarily with wood as the medium to build structures and rolling stock, but includes the use of other materials such as styrene, brass, resin, and other casting materials as appropriate.

Intentions here are teach & share techniques and "tricks" that can be adapted into your scratchbuilding projects working from simple projects through those of increasing complexity.

Scratchbuilder's Corner returned in September with a build of "The Towerless House" derived from the Branchline Trains Laser Art Tower House kit.



---

### **Scratchbuilding a Layout - Creating a Scene Based on a Theme**

by Tom Farrell ([tfarrell60@comcast.net](mailto:tfarrell60@comcast.net))

## **Two Master On30 Modelers Exchange Scratch-built Structures**

Two On30 Master Modelers are engaged in a creative exchange of scratchbuilt O scale structures, each reflecting the unique theme of their respective railroads: Gary Beaty is crafting a building with a vibrant Mexican flair, "Tommy's Puerto Borracho Cantina," complete with colorful stucco walls and intricate tile details that capture the lively spirit of the structures found in his Puerto



Borracho Railroad. In return, Tom Farrell is constructing “Terminal de Distribuidora de Cerveza Rústico Buff de Gary” (Gary’s Rustic Buff Beer Distributor Terminal) rooted in the gritty realism of Depression-era Pittsburgh, featuring weathered wood siding, soot-streaked walls, and a character unmistakable from his Rustic Buff & Old Gothic Railroad.



In addition to showcasing their craftsmanship and highlighting the contrasting themes of their layouts, this exchange will certainly make these structures intriguing talking points for visitors. They will also enrich the narrative of each layout, adding depth and interest as these seemingly out-of-place builds find their new homes.

This unique exchange promises to continue to cultivate a strong sense of

community and shared inspiration within the On30 family, the hallmark of this self-proclaimed “Black Sheep” sub-culture within the model-railroading world. Both structures will be featured in a live YouTube show on New Tracks Modeling later this year, with build-deadlines set before the end of 2024.

---

## A New Monthly Segment for our Zoom Show

Paul Reeves, owner of Kershaw Models, will host a new monthly segment called:

### “Using our Imagination with Everyday Inspiration”

Paul, with the creator of this segment, Chris Course, and his first guest Dennis Brennan will be on our December 18, 2024 show. Please watch this segment as it will give you a great idea of what you can expect from Paul in the future.

## New Tracks Modeling “MY BUILD” 2024

by Chris Course ([railrunner130@hotmail.com](mailto:railrunner130@hotmail.com))

Model railroading is about sharing and the monthly MY BUILD is your opportunity to share and show off your build with the world. Trains, structures, or boats, it doesn't matter. It doesn't have to be your latest build. Heck, it could even be something you found at a yard or estate sale and just thought was neat. Or, maybe if you're stuck on something, need a different technique, or are stumped on how to proceed on a project. This is a good part of the show to ask questions. Please ask. We can help. The August My Build is on YouTube at:

[#####](#)

Every other month we have a “theme.” These are not rigid. If you can find something to share that fits in a category, regardless of being “outside the box”, that is ENCOURAGED!

The schedule and topics for the **2024-2025** My Builds:

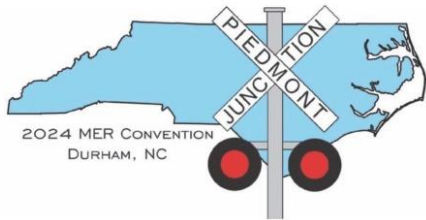
- October** Halloween. Haunted houses, abandoned buildings, abandoned railroad cars, scarecrows, derelict engines;
- November** Free for all! Anything goes!
- December** Holiday. Santa, Christmas billboard cars, snow scenery, snow plows, people ice skating, holiday lighting, holiday decorations.
- Jan 2025** Free for all! Anything goes!
- February** Kitbashes, Scratchbuilds;
- March** Free for all! Anything goes!
- April** Automation/Animation. Make it move!
- May** Free for all! Anything goes!
- June** Water. Waterfront buildings, wharves, boats, covered bridges, water tanks, anything water related
- July** Free for all! Anything goes!
- August** Harvest: farm equipment, grain elevators, hopper cars, mills, tractors, agriculture, barns, chicken coops, livestock, cattle pens/ranching, cattle cars, reefer cars;

**September** Free for all! Anything goes!

**October** Layouts. Finished, In-progress, Switching layouts, Modules, Dioramas

**November** Free for all! Anything goes!

**December** Interiors, Insides of buildings, engine houses, cabooses



## Piedmont Junction

**October 17-20, 2024**

Raleigh - Durham Marriott at Research Triangle Park  
4700 Guardian Dr., Durham, NC 27703

*Hotel Rate is \$79 USD per night, hotel registration is open NOW! Go to convention website for the link on the "Location/Hotel" tab.*

23 Layout Tours

44 Clinics

10 Operations Sessions

3 Prototype Tours

Model Contest, Company Store, Awards Banquet and More!

Website: [PiedmontJunction.org](http://PiedmontJunction.org)



Convention and hotel registration *Now Open*





## S-FEST 2024

<https://www.wrcresearch.com/SFEST24/>



Fall S-Fest 2024 will take place in St Louis from October 25<sup>th</sup> through the 27<sup>th</sup>. This year's event is being hosted by the American Flyer S Gaugers of the St Louis Area (AFSGSLA). This is the 47<sup>th</sup> edition of this annual event and will again take place at the Doubletree – Westport conveniently located along I-270 on the west side of St Louis. Reservations for the hotel can be made by calling them directly at 314-434-0100. Registration for the event can be done online by going to the club website at [trainweb.org/afsgsla](http://trainweb.org/afsgsla).

This premier S Gauge event includes a swap meet starting Friday afternoon continuing through Saturday afternoon where you can find a wide array of trains and train related merchandise, all in S gauge. During this time there will be clinics on a variety of related subjects as well as a craft session for the spouses. The club modular layout will be on display during the event which also can serve as a test rack for items you might purchase. This event also includes train races, a model contest and then capped off with a banquet, speaker and auction to wrap up the day. Sunday there will be a number of layouts in the area to tour to see the work of local train enthusiasts to learn about and share ideas for your own modelling efforts. Last but not least, we will have meet cars available which are American Models TOFC cars in Missouri Pacific and Chicago and Eastern Illinois livery.

Come join us in St Louis and immerse yourself in the best S gauge experience available. For further information you may contact Joel Weber at [weber1b14@gmail.com](mailto:weber1b14@gmail.com) or call at 630-977-9323.

### PRELIMINARY SCHEDULE

Friday October 25	Trading Room Open
8:00 AM to 9:00 PM	Saturday October 26 (cont.)
Registration Desk Open	9:00 Am to 1:00 PM
8:00 A.M. to 2:00 PM	Model Contest Viewing
Move In, Set Up, Display Room	9:00 Am to 1:00 PM
(only open for Vendor and Manufacturer)	Clinics and Spouses Program
10:00 AM to 9:00 PM	1:00 PM to 2:00 PM
Hospitality Room Open	Model Contest judging
2:00 PM to 9:00 PM	3:00 PM to 4:00 PM
Trading Room Open	Train Races and Incline Contest
3:00 PM to 7:00 PM	5:30 to 6:30 PM
Model Contest Entries Accepted	Cocktail Hour
4:00 PM to 8:30 PM	6:30 to ?? PM
Clinics Open	Annual S Fest Banquet
Saturday October 26	Annual Post Banquet Auction
8:00 Am to 3:00 PM	Sunday October 27
Registration Desk Open	9:00 AM to 1:00 PM
9:00 AM to 3:00 PM	Morning Layout Tours
	9:00 AM to 5:00 PM
	All Day Layout Tours

## What's to know about The Scales We Model In?

We have had many discussions with modelers who ask, “What is O scale or N scale all about? Does anyone really model in S scale? Can I really scratchbuild a model in N scale?” Your scale of choice may be G, O or O Hi-Rail, S, HO, or N, and there are others yet that modelers choose to build in today. However, we frequently know little about the details of other scales, are possessed of misinformation, or simple mythology.

To discuss this on a regular basis, New Tracks Modeling is running monthly segments on G, O, O Hi-Rail, S, S AF/Hi-Rail, HO, and N scale hosted by knowledgeable talented modelers in each scale. These modelers will try to answer your questions, present information about what is possible to accomplish, and then present what a new modeler entering a scale might need to consider.

The remaining **2024/2025 schedule** for “**The Scales that We Model In**” is:

<b>Sept.</b>	4th O, O-HR	11th HO, N	18th S & S HR	25th G
<b>October</b>	2nd O, O-HR	9th HO, N	16th S & S HR	30th G
<b>Nov.</b>	6th O, O-HR	13th HO, N	20th S & S HR	27th G
<b>Dec.</b>	4th O, O-HR	11th HO, N	18th S & S HR	25th G
<b>Jan.</b>	1st O, O-HR	8th HO, N	15th S & S HR	22nd G
<b>Feb.</b>	O, O-HR	HO, N	S & S HR	G
<b>March</b>	O, O-HR	HO, N	S & S HR	G
<b>April</b>	O, O-HR	HO, N	S & S HR	G
<b>May</b>	O, O-HR	HO, N	S & S HR	G
<b>June</b>	O, O-HR	HO, N	S & S HR	G
<b>July</b>	O, O-HR	HO, N	S & S HR	G
<b>August</b>	O, O-HR	HO, N	S & S HR	G
<b>Sept.</b>	O, O-HR	HO, N	S & S HR	G
<b>October</b>				

If you have specific questions you want addressed, or a specific person you would like to see interviewed on a scale segment, please contact the appropriate host. Their email addresses are shown below.

**G Scale Modeling** hosted by Steve Bittinger (10/30)September 25 See: <https://www.youtube.com/watch?v=ECt4PiL7w9Q>

Sponsored by New Creations Victorian Railroad Buildings LLC

**O Scale Modeling** hosted by David Schultz (10/2)

Sponsored by O Scale Central

[David.Schultz@newtracksmodeling.com](mailto:David.Schultz@newtracksmodeling.com)September 4 See: <https://www.youtube.com/watch?v=-oKoCMjyaQM>**O Gauge Hi-Rail Modeling** hosted by Dennis Brennan (10/2)

Sponsored by Millhouse River Studio

[dennis.brennan@newtracksmodeling.com](mailto:dennis.brennan@newtracksmodeling.com)September 4 See: <https://www.youtube.com/watch?v=SwPmQDzGf1U>**S Scale Modeling** hosted by Jamie Bothwell (10/16)

Sponsored by National S Gauge Association (NASG)

[jamie.bothwell610@gmail.com](mailto:jamie.bothwell610@gmail.com)September 18 See: <https://www.youtube.com/watch?v=CutvqkoPCaA>**S Hi-Rail Modeling** hosted by Joel Weber (10/16)

Sponsored by American Models

September 18 See: <https://www.youtube.com/watch?v=SHEmaa9hdGI>**HO scale Modeling** hosted by Gary Shurgold (10/09)

Sponsored by Mainline Hobby Supply

[gshurgold@gmail.com](mailto:gshurgold@gmail.com)**N Scale Modeling** hosted by Bill Stimson (10/09)

Sponsored by National Capital Trains

September 11 See: <https://www.youtube.com/watch?v=IC3CXPso0QOI>

## Train Show Schedule

<p><b>Strasburg 2 Rail Train Show</b>  <b>October 12th, 2024 9AM - 1PM</b>          Strasburg Train Show: Two-rail swap meet at the Strasburg Fire Co., 203 W. Franklin St, Strasburg, PA Admission \$7, wives/children/military with ID free Tables \$35 for first table, additional \$30 per. Great food, modular layout, clinics. Contact Richard Yoder EST evenings 484-256-4068  <a href="#">Click here for info.</a></p>	<p><b>MrMuffin's Midwest Best Train and Hobby Show</b>  <b>October 25, 2024 and October 26, 2024</b>          We have booked the Tipton County Fairgrounds for our first annual MrMuffin's Midwest Best Train and Hobby Show. This will be a hands on show with live hobby demonstrations and "how-tos" covering most aspects of the Model Railroading Hobby. Other hobbies will be featured.  <a href="https://mrmuffinstrains.com/pages/mrmuffinsshow">https://mrmuffinstrains.com/pages/mrmuffinsshow</a></p>
<p><b>42nd Annual Cleveland O Scale Meet</b>  <b>November 2nd &amp; 3rd, 2024</b>  <b>Saturday 11am – 4pm, Sunday 9am –1pm</b>          Admission: \$10.00, (Spouses and Children under 12 Free) Clinics / Model Contest / Presentations Supporting everything 1:48 Scale! O Scale 2 Rail, Proto48, O Scale Traction, O Scale Narrow Gauge Interested or New to O Scale? We can help! Location: UAW Local 1005 Large Hall 5615 Chevrolet Blvd. Parma, Ohio 44130 Free Parking 130 Tables available Dealer setup Saturday morning For all table information, contact <a href="#">Skyler Shippy</a></p>	<p><b>2024 Danville Indiana O/S Scale Event + CID/NMRA Train Show November 23, 2024</b>          Hendricks County Fairgrounds 1900 E Main St Danville, IN 46122 The Indiana S Scalers are happy to announce our 3<sup>rd</sup> Annual O/S Scale Event. In 2023 the O/S Room nearly sold out, so make your vendor reservations early to ensure a sales table. New for 2024 is an S Scale Social Event Friday evening! Details will be coming. Public Show Date: Saturday, November 23<sup>rd</sup> Vendor/Layout Move-in Date: Friday, November 22<sup>nd</sup> Vendor registrations should be directed to the Central Indiana Division (CID) Show Manager, Dave Mashino:  <a href="mailto:danvilletrainshow@gmail.com">danvilletrainshow@gmail.com</a></p>
<p><b>O Scale March Meet March 20-23, 2025</b>          Westin Lombard Yorktown Center Lombard, IL The March O Scale Meet is a 3 day gathering of vendors, customers, clinics, and fun held annually in March in the Chicagoland area. This is the Chicago O Scale train show you've heard of.          Website: <a href="http://marchmeet.net/">http://marchmeet.net/</a></p>	





## 2025 Railroad Hobby Show

Tickets are NOW ON SALE for the 2025 Railroad Hobby Show!  
January 25 and 26, 2025  
9:00 am - 5:00 pm on Saturday | 10:00 am - 4:00 pm on Sunday

<https://www.railroadhobbyshow.com/index.php>

[Tickets for the Big E](#)

***The Great  
Scale Model  
Train  
and Railroad  
Collectors  
Shows  
& Railroad  
Marketplace***



**Location: Maryland State Fair 2200 York Rd. Timonium,  
MD 21093**

**[Click here for complete map and directions from all points.](#)**

**[Click here to see what it's all about!!](#)**

**Next Show is Sat. & Sun Oct 12th and 13th, 2024  
Hours: 9-5; Sat., 10-4 Sun.**

**NOW!!! GET YOUR TICKETS ON LINE!!**

**[CLICK HERE](#)**

## Volunteers Working on the Real EBT Railroad

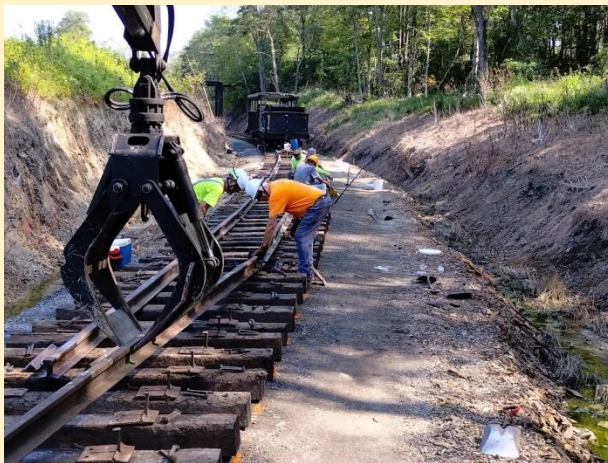
Accomplishments:

- Monday, August 26th:

Lifting and tamping of low joints on the north side of McMullin Summit. Preparation of the work flatcar for Tuesday's work (transferring tools, etc.)

- Tuesday, August 27th:

Construct (assemble, gauge and spike) track to 400 feet south of the overhead bridge at Jordan Summit. Lay out some track beyond that.



Setting rail - Aug 27th  
(D. Johnson photo)



Spiking up - Aug 27th  
(D. Johnson photo)

In case you're keeping track, it's 3,000' from Jordan Summit to McCoy Road, meaning that we are about 2,600' from the crossing (half a mile). We have another 300' to go in the curve where we're working now, then we'll be in a tangent stretch, which means that the construction pace will pick up.

Assisting this week: Ed Kompare, Al Gallo, John Widmeyer, Dave Johnson, Daniel Lane, Larry Fuchs, and Bill Reynolds.



End of track - August 27th (G. Tucker photo)

Another productive week is in the record books. Accomplishments this week:

Assembled track now extends to 750' south of the bridge at Jordan Summit (and 50' from the beginning of the straightaway shown in front of the photo taken looking south).



- Gauged and spiked track extends to 585' south of the bridge.

We used a rail bender to take a kink out of a stick of rail; works well.



Assisting this week were: Larry Fuchs, Daniel Lane, John Widmeyer, Brian Wolfe, Bill Reynolds, John Quinn and Dave Johnson. We are forever in your debt, gents (maybe longer!).



## **Attend the 2024 S Fest (October 25-27) in St Louis, Missouri, Preorder the New “S Scale Animated Scenes”**

**Visit our New Tracks Modeling Table to say Hello**

**Support our New Tracks Modeling Mentoring Scholarship Program.**

The Convention Spokesman is Joel Weber and provided the following information.

Fall S-Fest 2024 will take place in St Louis from October 25<sup>th</sup> through the 27<sup>th</sup>. This year’s event is being hosted by the American Flyer S Gaugers of the St Louis Area (AFSGSLA). This is the 47<sup>th</sup> edition of this annual event and will again take place at the Doubletree – Westport conveniently located along I-270 on the west side of St Louis.

Reservations for the hotel can be made by calling them directly at 314-434-0100. Registration for the event can be done online by going to the club website at [trainweb.org/afsgsla](http://trainweb.org/afsgsla).

This premier S Scale/Gauge event includes a swap meet starting Friday afternoon continuing through Saturday afternoon where you can find a wide array of trains and train related merchandise, all in S Gauge. During this time there will be clinics on a variety of related subjects as well as a craft session for the spouses. The club modular layout will be on display during the event which also can serve as a test rack for items you might purchase. This event also includes train races, a model contest, and is capped off with a banquet, speaker and auction to wrap up the day. Sunday, there will be a number of layouts in the area to tour to see the work of local train enthusiasts to learn about and share ideas for your own modeling efforts. Last but not least, we will have meet cars available which are American Models TOFC cars in Missouri Pacific

and Chicago and Eastern Illinois livery (**include photo**). The meet cars are suitable for both American Flyer and scale collectors and operators.



Come join us in St Louis and immerse yourself in the best S Scale/Gauge experience available. For further information you may contact Joel Weber at [weber1b14@gmail.com](mailto:weber1b14@gmail.com) or call at 630-977-9323



## 1:64 Scale Transfer Station w/Animation and American Models Freight Cars & Trucks



Created in collaboration by:

**CatzPaw Innovations LLC, New Creations Victorian Railroad Buildings LLC,  
and American Models**

*Kit Contents by Manufacturer*

### ***New Creations Victorian Railroad Buildings, LLC***

The Transfer Station in S-Scale (1:64)

### ***CatzPaw Innovations, LLC***

The *InvisaTrax™ Transport System* components needed to move the pallet jack through the station: all track components, N20 motor, motor speed & direction controller, AA battery holder, magnets, and other ancillary items including: the Ride-on Pallet Jack, and Pallet Jack Operator (Pallet-Jack Jack). An optional *Accessory Pack* can be added that contains: Logistics Manager with Clipboard, Worker Lifting Cardboard Box, 48 x 48 scale-inch Pallets (x4), 55 Gallon Steel Drums (x2), Large Crates (x2), and Cardboard Boxes (set of four).

### ***American Models Products***

A Voucher containing information and a code to receive \$45.50 worth of products from American Models. You will be able to use this voucher on the American Models website to select from a wide range of freight cars, truck trailers, and more.

**Pre-order now to receive a 20% discount!**

<https://tinyurl.com/AnimatedTransferStation>



# New Tracks Show Schedule – October/November

(Register at: <https://newtracksmodeling.com/>)

<p><b>Oct. 2</b>  Welcome &amp; Announcements; Jim Kellow  O Scale Modeling with David Schultz  O High Rail with Dennis Brennan  Easy Technique Painting Figures with Jeff Jordan (Pt 3)  Animating an Athearn rotary snowplow with a DCC decoder with Bernd Fanghanel  Scratchbuilder's Corner 39 with Martin Brechbiel  Scratchbuilding his layout with Tom Farrell  “What Do You Want to Talk About” with Steve Sherrill  Building Old Wood kits going back to the 1960s with Steve Montgomery</p>	<p><b>Oct. 9</b>  Welcome &amp; Announcements; Jim Kellow  HO Scale Modeling with Ed O'Rourke  N Scale Modeling with Bill Stimson  Joel Weber S Fest St Louis with representative S Scale Animated Scene  Animating an Athearn rotary snowplow with a DCC decoder with Bernd Fanghanel  Scratchbuilder's Corner 40 with Martin Brechbiel  Scratchbuilding his layout with Tom Farrell  “What Do You Want to Talk About” with Steve Sherrill</p>
<p><b>Oct. 16</b>  Welcome &amp; Announcements; Jim Kellow  S scale Modeling with Jamie Bothwell  S gauge Modeling hosted by Joel Weber  Local Clubs and Divisions with Phil Edholm  <b>MY BUILD with Chris Coarse and Greg Cassidy</b></p>	<p><b>Oct. 23</b>  Welcome &amp; Announcements; Jim Kellow  Kurt Thompson Lifestyle Interview  Building in Brass with Bernd Fanghanel</p>
<p><b>Oct. 30</b>  Welcome &amp; Announcements; Jim Kellow  G Scale Modeling with Steve Bittinger  What's Going on in OSC. Why O Scale with David Vaughn  Building in Brass with Bernd Fanghanel  Build Along in G scale of John's Place with Steve Bittinger</p>	<p><b>Oct. 30 (con't)</b>  Build Along in O scale of John's Place with Bill Davis  Scratchbuilder's Corner 40 with Martin Brechbiel  Scratchbuilding his layout with Tom Farrell  “What Do You Want to Talk About” with Steve Sherrill</p>
<p><b>Nov. 6</b>  Welcome &amp; Announcements; Jim Kellow  O Scale Modeling with David Schultz  O High Rail with Dennis Brennan  Building in Brass with Bernd Fanghanel  Build Along of New Creations Victorian Railroad Buildings LLC Kit (G Scale) with Steve Bittinger and Steve Sherrill  Build Along of New Creations Victorian Railroad Buildings LLC Kit (O Scale) with Bill Davis  Scratchbuilder's Corner 41 with Martin Brechbiel  Scratchbuilding his layout with Tom Farrell  “What Do You Want to Talk About” with Steve Sherrill  The Caboose Phil Edholm, Tom Farrell and Jeff Jordan -  Video of Pittsburg Convention Contest and layout and prototype tours</p>	<p><b>Nov. 13</b>  Welcome &amp; Announcements; Jim Kellow  HO Scale Modeling with Ed O'Rourke  N Scale Modeling with Bill Stimson  John Anfinson discusses his club in Deadwood SD  “Building your Dream Layout one Diorama at a time” with Matt Woods. Part 1  Build Along of New Creations Victorian Railroad Buildings LLC Kit (G Scale) with Steve Bittinger and Steve Sherrill  Build Along of New Creations Victorian Railroad Buildings LLC Kit (O Scale) with Bill Davis  Scratchbuilder's Corner 42 with Martin Brechbiel  Scratchbuilding his layout with Tom Farrell  “What Do You Want to Talk About” with Steve Sherrill  The Caboose Phil Edholm, Tom Farrell and Jeff Jordan -  Video of Pittsburg Convention Contest and layout and prototype tours</p>
<p><b>Nov. 20</b>  Welcome &amp; Announcements; Jim Kellow  S scale Modeling with Jamie Bothwell  S gauge Modeling hosted by Joel Weber  Build Along of New Creations Victorian Railroad Buildings LLC Kit (G Scale) with Steve Bittinger and Steve Sherrill  Build Along of New Creations Victorian Railroad Buildings LLC Kit (O Scale) with Bill Davis  <b>MY BUILD with Chris Coarse and Greg Cassidy</b>  The Caboose Phil Edholm, Tom Farrell and Jeff Jordan -</p>	<p><b>Nov. 27</b>  Welcome &amp; Announcements; Jim Kellow  G Scale Modeling with Steve Bittinger  What's Going on in OSC. Why O Scale with David Vaughn  Building in Brass with Bernd Fanghanel  Build Along of New Creations Victorian Railroad Buildings LLC Kit (G Scale) with Steve Bittinger and Steve Sherrill  Build Along of New Creations Victorian Railroad Buildings LLC Kit (O Scale) with Bill Davis  “Building your Dream Layout one Diorama at a time” with</p>

Video of Pittsburg Convention Contest and layout and prototype tours

Matt Woods. Part 2  
 Scratchbuilder's Corner 43 with Martin Brechbiel  
 Scratchbuilding his layout with Tom Farrell  
 "What Do You Want to Talk About" with Steve Sherrill  
 The Caboose Phil Edholm, Tom Farrell and Jeff Jordan -  
 Video of Pittsburg Convention Contest and layout and prototype tours

## Coming up in future shows!

These segments provide modelers the opportunity to build a model to not only demonstrate their modeling skills and techniques but to help other modelers improve their skills. These segments may be for one or more shows depending on the modeling presentation. Viewers can ask questions and learn from experienced modelers various facets of modeling.

**Kurt Thompson with Modeling Lifestyle → Show date → October 23, 2024**

## Building Your Dream Layout one Diorama at a time

Starting on November 13, 2024 Matt Woods will begin his series on our Zoom Show with an introduction about his Diorama Modeling and the techniques he uses to create his artistic scenes. Matt is a talented well-known artistic modeler to many On30 modelers.





## **New Tracks' Modeler Wins First Place in "Structures" at National Narrow Gauge Convention**

Tom Farrell, a frequent contributor to New Track's Live YouTube Show, won First Place in the "Structures" category with his scratch built "Whistle Stop Saloon" model at The 44th National Narrow Gauge Convention (NNGC) in Pittsburgh, Pennsylvania, which took place September 11–14, 2024

To his great surprise, this structure received another award at the same show: "Best Wooden Model" from Mt. Albert Scale Lumber. For reference this is the same model that was awarded "Best of Show" at the recent Harrisburg Narrow Gauge O Summer Meet, held on June 7-8, 2024.

What makes this especially meaningful to Tom is that the structure's second floor showcases portraits of three modelers he holds in high regard: John Allen, Al Judy, and Allen Littlefield. Ironically, Al Judy's portrait was added before his illness and recent passing. Tom found it especially appropriate that my structure has been awarded these honors as a tribute to extraordinary modelers.

Tom showcased the build of this multiple award winning structure on the August 10, 2024, New Tracks Modeling Live YouTube Show. The video is available for post viewing on this link: [https://youtu.be/W6WEx\\_304KE?si=85rZtSHpA9sOqnBw](https://youtu.be/W6WEx_304KE?si=85rZtSHpA9sOqnBw). To see more of Tom's scratch building, visit The Rustic Buff & Old Gothic On30 Model Railroad Facebook page.



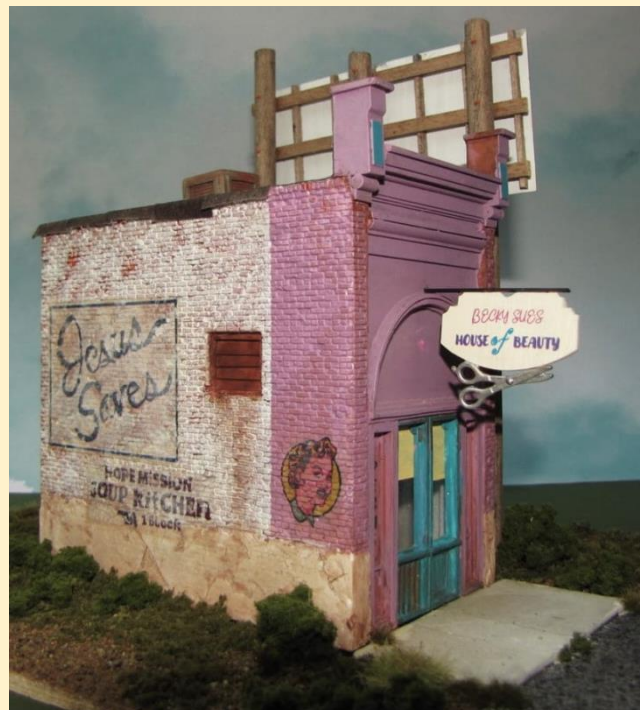
## New Tracks Master Model Builder Partners with Frenchman River Models on New Tom Yorke Kits

Starting on December 4, 2024, Master Modeler Tom Farrell will begin a partnership where he constructs the newly released O-Scale kits (1/48) designed by Tom Yorke and produced by Frenchman River Model Works. Each release will be featured as a "Watch Me Build" segment for the live New Tracks Modeling YouTube show, aired every Wednesday at 7:00 PM ET.

The series will kick-off with the "Becky Sue's House of Beauty" kit, which Frenchman River Model Works will release in August/September 2024.

Here is a link to the new structure:  
<https://frenchmanriver.us16.list-manage.com/track/click?u=d3c64d7e301361726ba4ae1ab&id=cbd3262093&e=b5aaae6bd3>

Future shows on this "Watch me Build" series will be scheduled based on the release dates of new Tom Yorke designs or with a featured model presently offered by Frenchman River Model Works.



# New Tracks Modeling announces

## “S Scale Animated Scene”

### Kits you can Build -- Scenes you can Create

The “Animated Transfer Station with Freight Car and Trailer” was created in collaboration by CatzPaw Innovations LLC, New Creations Victorian Railroad Buildings LLC, and American Models.

**American Models:** <https://americanmodels.com/>

Email: [americanmodels@sbcglobal.net](mailto:americanmodels@sbcglobal.net)

Telephone: (734) 449-1100



**CatzPaw:** [www.catzpaw.com](http://www.catzpaw.com)

Email: [info164@catzpaw.com](mailto:info164@catzpaw.com)

Telephone: (770) 847-0076



**New Creations Victorian Railroad Buildings LLC**

Website: <https://newcreationsvictorian.com/>

Email: [eauchiche@gmail.com](mailto:eauchiche@gmail.com)

Telephone: (661) 444-9656



The kit will be animated using the InvisaTrax™ Transport System, this along with the custom Transfer Station building, will provide the core elements for a scene that can be displayed independently or integrated into your 1:64 scale model railroad. In addition, you will receive a discount code that can be used at American Models where you can select from a wide range of freight cars, truck trailers, and more.

When available, each manufacturer will have a link on their website that will take you directly to the product page where the kit can be ordered. The main components of the kit, the building and animation components will be shipped directly to you in one package. The remaining products

will be selected by you from the American Models website and will be shipped by American Models in a separate package.

Many of us remember when American Flyer produced operating accessories that provided animation and functionality to create scenes on our model railroads. In fact many of us still buy them, if we can find them, in any reasonable condition. This new scene is not a recreation of an old American Flyer accessory, but rather a new scale 1/64 animated scene using new technology, and materials. The scene is suitable for use by S scale, American Flyer, and Hi-Rail model railroaders, or by any other modeler who creates 1/64 displays or dioramas.

The “Animated Transfer Station” reflects the movement of products between rail and truck. The core components include: a laser cut Transfer structure by New Creations Victorian Railroad Buildings LLC, 3D print figures and accessories along with the relevant InvisaTrax™ animation components by CatzPaw Innovations LLC, and the selection of rail cars and/or truck trailers from American Models. The kit will include detailed assembly instructions making sure that anyone can successfully create a unique S scale (1:64) animated scene. This is a great way to enhance your modeling experience.

The best part is all the work of designing the core scene, and engineering the technology, has been done for you. Your participation is to have fun modeling and to experience the thrill of creating your own personalized scene.

The “Animated Transfer Station” will be available to preorder at the 2024 S-Fest St Louis Missouri Convention, October 25-27, 2024. For details about the S-Fest convention, go to their website: [trainweb.org/afsgsla](http://trainweb.org/afsgsla)

If you cannot attend the S-Fest convention, you may preorder during the month of November by visiting the product’s webpage at: <https://tinyurl.com/AnimatedTransferStation> or by using the QR code



provided in the November issue of the New Tracks Modeling Observations Newsletter. Our newsletter is available to all of our website subscribers. For website subscription information please go to our website: [newtracksmodeling.com](http://newtracksmodeling.com).

When you pre-order using the above methods, you will receive a 20% discount off the kit. Pre-orders do require a 50% deposit due at time of the order. This deposit is nonrefundable; unless in the rare event the product is not brought to market, then the deposit will be refunded in full. The anticipated shipping date is mid-December 2024. You will be charged the 50% balance on/or around December 16, 2024. When the final payment is received, the main components of the kit, the building and animation components, will be scheduled for shipment. In addition, you will receive an email with a PDF document that will contain instructions and a code for you use to place your order for the American Models products of your choosing.

For questions about ordering contact any of the three participating manufacturers using the information at the beginning of this article.

If you like this concept or have suggestions for future S Scale Animated Scenes please contact Joel Weber, Chairman of our S Scale Animated Scene Advisory Committee ([weber1b14@gmail.com](mailto:weber1b14@gmail.com) or call at 630-977-9323).

If you just want to talk, gossip, or suggest other new concepts or projects you want New Tracks Modeling to investigate my email is [jimkellow@newtracksmodeling.com](mailto:jimkellow@newtracksmodeling.com)

---

## VENDOR'S CORNER



For the HO scale crowd we have 1 item this month.

RRMA-03- Here is our latest fishing boat. This boat will look great in your harbor tied up to the dock or in the harbor channel going out for today's catch. You get the hull and the wheel house and roof. The rear fish box has removable hatches.



The mast and boom and the searchlight are 3D printed. You get 4 cleats you can place yourself and rigging string and clear acetate for the wheelhouse windows. The casting measures 5 1/2" long, 2" wide, and 4 1/4" tall with the mast. All resin casting and comes unpainted. [Click here to check it out](#)

For the O scale crowd we have 1 item this month.

RRMS-O-02 - Here we have an old farm tractor striped of useful parts and dumped to let mother nature take care of the bones. The casting measures 3" by 3" by 1 1/4" tall. All resin casting and comes unpainted.



[Click here to check it out](#)



The Snowbeast in HO Scale by Conowingo Models  
 The end of summer is near. That means it's time to make sure your railroad is ready for snow.

**ORDER YOURS TODAY**



We've been looking for some good evergreen trees. In our quest, we found Moose Creek Trees and have decided to offer them. We'll have them mainly at train shows. For now, we will be selling ten packs of several different sizes, so we can cover N, HO, S and O scales. Quantities larger

than ten we will order and ship to you. Look for them soon in our online store.

## Red Wiggler's Bait Shop

This is a little side project we were toying with one weekend while the laser cutter was diligently working on the September projects. It's actually based on the Painter General Store. We're interested to see if there is a market for such a building. If so, **please tap the button and let us know!** Bonus points for knowing the origin of the name.



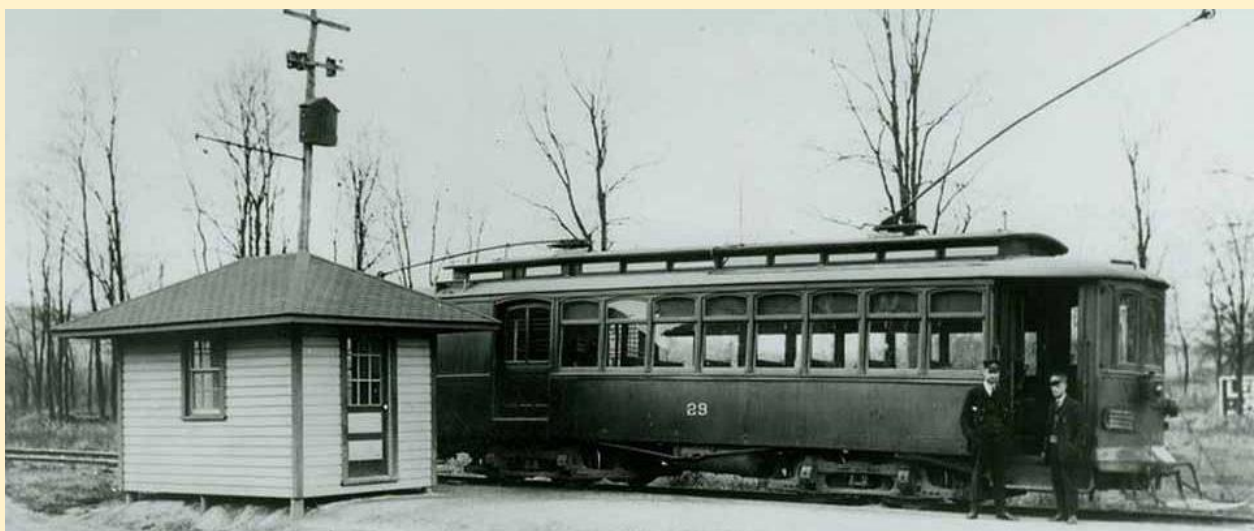
**Tell Us What You Think Of Red Wiggler's**

## Reaching Applicants for the NMT Scholarship – Getting the Word Out!

Every reader of this newsletter can help get applicants for our scholarships both at their local HS and college levels. Promoting scholarship availability and reaching out to college students can be done through various effective methods. Here are some suggestions:

1. **College Websites:** Contact the administration or career services departments of various colleges and universities, asking them to include your scholarship opportunity on their websites or scholarship portals. This will ensure visibility to a large number of students.
2. **Social Media:** Utilize social media platforms, such as Facebook, Twitter, Instagram, and LinkedIn, to share information about your scholarship. Create visually appealing posts and encourage students to share the information with their peers.
3. **Email Campaigns:** Obtain email lists from colleges and universities, targeting students who fit the eligibility criteria for your scholarship. Send out personalized emails offering information on the scholarship, application process, and deadlines.
4. **College Fairs and Events:** Participate in college fairs and events to directly interact with students. Set up a booth or table where you can provide brochures, answer questions, and raise awareness about your scholarship opportunity.
5. **Campus Ambassadors:** Collaborate with student organizations or campus ambassadors from different colleges to help promote your scholarship. These students can serve as brand ambassadors, spreading the word about your program among their peers.
6. **Press Releases:** Draft and distribute press releases to local and national media outlets to generate wider awareness about your scholarship program. This can attract attention from a broader audience, including potential applicants.
7. **Online Scholarship Databases:** Register your scholarship on popular scholarship search platforms, such as Fastweb, Scholarships.com, or College Board's Scholarship Search. These platforms are frequently used by students searching for financial aid opportunities.

Remember to include clear instructions on how students can apply, including any required documents and deadlines. Make the application process straightforward and easily accessible to maximize student engagement with your scholarship opportunity.



## Please Continue to Help Our Next Generation of Model Railroaders by Donating to our 2025 Scholarship Program

We are currently soliciting donations in 2024 for our next year's scholarships and are hopeful we will exceed our 2023 donation level and be able to offer even more than 3 scholarships in 2025. As a registered 501(c)(3) non-profit corporation, your donation to the scholarship is tax deductible as allowed by law. We will be accepting applications for our 2025 Scholarship awards January 1, 2025 through July 1, 2025.

We will announce by December 31, 2024 the amount and number of scholarships available in 2025. The 2025 Scholarship application will be available on our website: [newtracksmodeling.com](http://newtracksmodeling.com)

The New Tracks Mentoring, Inc., grants Scholarships to eligible HS graduates who will be, or are currently pursuing a STEAM (Science, Technology, Engineering, Arts or Math) program at a two-year or four-year college, or university or an accredited technical school. Our scholarships are paid directly to the school in the Student's name and can be used for any fee owed to the school, including room, board, or other school fees such as stuff bought at the school's bookstore. The Officers of the non-profit Corporation are: Jim Kellow, MMR President, Bob Davidson, Vice President, Phil Edholm, Secretary, Tom Farrell, Treasurer, and Jeffery Joyner, Attorney.

The simplest way for individuals or Corporations to donate is to use Zeffy. We chose Zeffy as they insure that 100% of your contribution goes to our scholarship. There are no processing or administration fees. To use Zeffy, please click → [here!](#)



If you wish to make a contribution by check, please make the check payable to: **New Tracks Mentoring, Inc.**, and mail it to:

**New Tracks Modeling Mentoring Scholarship  
c/o Tom Farrell  
2026 W. Stanton Ct.  
Bloomington, IN 47404**

# Individual and Company donations so far in 2024 for our 2025 Scholarships

## Individual Donors

Individual in 2024 who have donated to our 2025 scholarships currently are: David Menard, Gerald, Linda Feeney, Jim Kellow MMR, Ft Ron Walters, Bob Charles, MMR, Jeff Zigley, Bob Davidson, and Jim Foley.

Thank you all so much for the leadership and financial commitment you have made to our young future modeler's education. Your help is greatly appreciated.

## Current Company Donors → [see page 4!](#)

Any Company donation is greatly appreciated and will be recognized. Companies that donate \$250 in any annual scholarship cycle will be identified as Brass Donors; Silver Donors will be recognized for a \$500 contribution, Gold Donors for a \$750 contribution, and Platinum Donors for a \$1,000 contribution. Donors who contribute at least \$2,000 will be listed as a specific scholarship sponsor. Please contact us at: [nttms@newtracksmodeling.com](mailto:nttms@newtracksmodeling.com) to arrange for your corporate donations. Donate early to maximize your exposure. Remember, your contribution will help the young modelers who are the future of our hobby.

## Everyone can Help Get The Word Out to potential Donors and Applicants Showing our Scholarship Banner at Events and promote our Scholarship by Word of Mouth.

Bob Davidson generously donated five banners through his company, Exhibits And More, which can be shown at train shows and rail expos across the country.



Each banner is 3' wide and about 7' tall and has a QR code on it to link you directly to our website to get more information including the application to apply. The banners are in a retractable unit that is very easy to ship and set-up. Get one of these for your event; just let Bob Davidson know at: [bobdavidson@newtracksmodeling.com](mailto:bobdavidson@newtracksmodeling.com)

Table top banners are also available as are handouts. They're about 16" wide and 40" tall. I'll be talking about these on one of our Zoom shows. I think they'll be great for smaller events and local shows.

In addition to the banners we



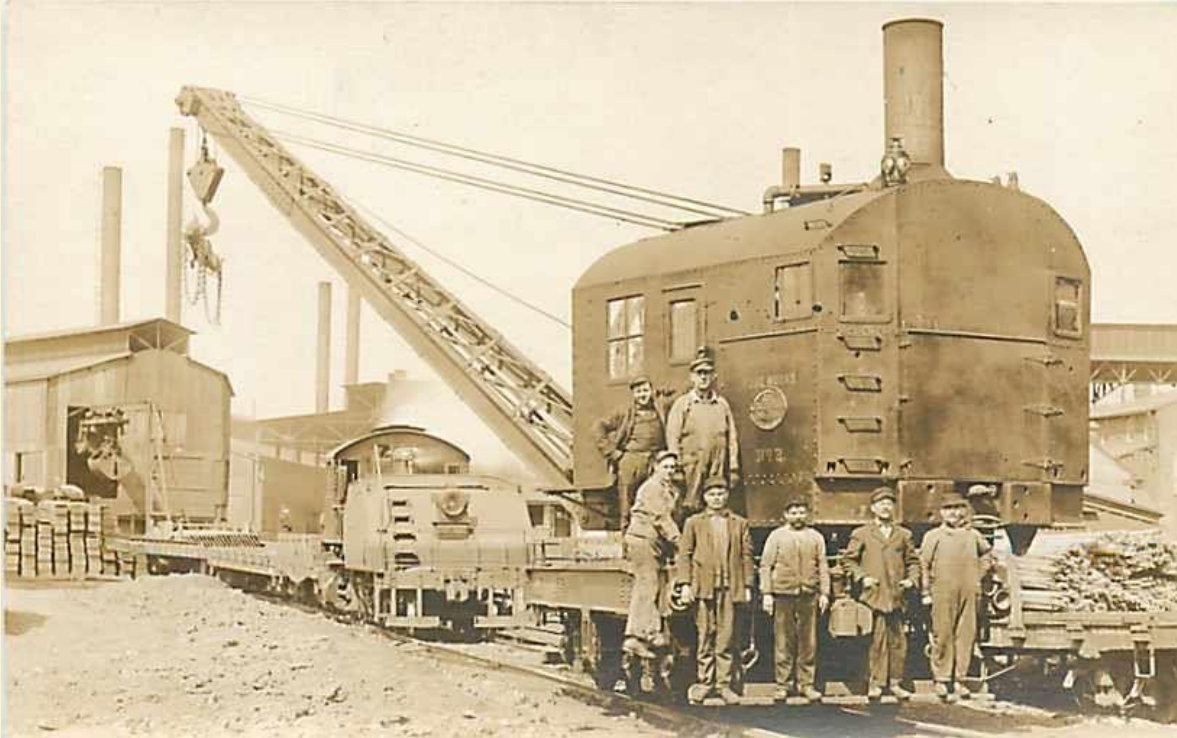
can also provide handouts about the Scholarship program to local events we are not able to attend in person. All you have to do is contact Bob Davidson at: [bobdavidson@newtracksmodeling.com](mailto:bobdavidson@newtracksmodeling.com)

Look for **New Tracks Modeling** at any show or event you attend. We hope to be represented at as many shows as possible in 2024-2025. If you want to take one of our Banners, or help man a table, or have us be a part of your table contact Bob Davidson at: [bobdavidson@newtracksmodeling.com](mailto:bobdavidson@newtracksmodeling.com)

We were at the Amherst Show, the GSMTS in Timonium, and will be at the 2024 O Scale March Meet in Chicago, IL, the National Narrow Gauge Show in Pittsburgh, Pa, Al Judy's two shows, O Scale, and O Narrow Gauge, in Harrisburg, Pa, the NASG 2024 Convention in Harrisburg, Pa, the Piedmont Division of the SER Region of the NMRA show, the Midwest Region of the NMRA show, and various shows and convention out west including the Pacific Coast Region of the NMRA annual convention. In addition we are producing the Virtual Train Show which will be a part of the Joint Physical and Virtual NMRA Pacific Coast Region's Annual Convention. We hope to be able to do more of these Virtual Train Shows jointly with other NMRA Regions, Divisions, and other organizations throughout the United States. Please email me ([jimkellow@newtracksmodeling.com](mailto:jimkellow@newtracksmodeling.com)) if your organization would like more information about these Virtual Train Shows for your organization.

Remember one of these years your kids or grandkids may benefit from the New Tracks Modeling Mentoring Scholarship program that you helped start. I truly hope so.

Thank you to everyone who helped us display our banners, or pass out our handouts at shows around the country last year. We are currently taking reservations for our banners for 2024/2025. To let us know you are interested in displaying our banner or need handouts for a local event please contact Bob Davidson at: [bobdavidson@newtracksmodeling.com](mailto:bobdavidson@newtracksmodeling.com)



As always, if you just want to talk or comment, or continue this discussion, please contact me at: [jimkellow@newtracksmodeling.com](mailto:jimkellow@newtracksmodeling.com)  
Or, join our Facebook group: New Tracks Modeling. We have over 900 modelers on our Facebook group and hope you join us.

Thanks for reading!

Happy Modeling,  
Jim Kellow, MMR