



## New Tracks Modeling Observations

Sponsored by:



Brennan's Model Railroading

<https://www.brennansmodelrr.com/>

(816)-252-4605

Welcome to the November issue of the New Tracks Modeling Observations Newsletter. Updates to our regularly scheduled program segments are also included along with the schedule for November and December (see pp. **24-25**). Announcements of new products from vendors and news about trains shows and conventions, and New Tracks Modeling Scholarship news, and its travel about the country are included. As always, send your articles, tips or “tricks” about any aspect of model railroading, or just share a photo or two of a model you are building directly to me at: [Martin.Brechbiel@newtracksmodeling.com](mailto:Martin.Brechbiel@newtracksmodeling.com). Of note, Greg Cassidy has joined the staff of Me, Myself, and I as our official proofreader!

Please contact our Executive Editor, Martin Brechbiel, MMR, (Martin's new tracks email) with your comments, suggestions, details of new products you are producing in any Scale, upcoming events and Train shows, or any of your views, opinions, and comments.

### From Jim Kellow, MMR

A New Monthly Segment for our Zoom Show

Paul Reeves, owner of Kershaw Models, will host a new monthly segment called: “Using our Imagination with Everyday Inspiration”

Paul, with the creator of this segment, Chris Course, and his first guest Dennis Brennan will be on our December 18, 2024 show. Please watch this segment as it will give you a great idea of what you can expect from Paul in the future.

Here is the original idea that Chris Course outlined for the segments. Thanks Chris for a great idea to show how artistic our modeling is and how we can improve our efforts.

Chris wrote:

“Essentially, it's about everyday inspiration..... It's a segment where someone shares a building, an area, something they've been researching in order to spark interest and imagination. It could take five minutes or maybe longer.

“As an example, when I was in Vermont, one of the things I did was research what remains of the White River Railroad. It started in Rochester, Vermont and snaked southward and then east towards Bethel, Vermont. At Bethel, it connected to the Central Vermont. I was surprised what remains of this railroad that was wiped out by epic floods, rebuilt and went bankrupt for the last time in 1931.”

“As another example, on the same trip, I found a really neat house in Pittsfield, VT that has some very unusual gingerbread siding. Perhaps a segment on that type of architecture. Or, perhaps the house at the top of the hill. It had a water tank in the attic. It's on the list of historic buildings. My father-in-law told me that it used to be a butcher shop. It was recently vacated and is in very poor condition. However, in the last month or so, some guys have begun to flip it and it's starting to improve already.”

“It doesn't necessarily have to be about architecture. It could be about a module idea, such as the village of Quidi Vidi in St. John's Newfoundland.”

“It's a cool concept, but we need for people to contribute. Heck, it may even get some of the people that watch the show and don't model to become involved.”

I love this idea and believe it can even include “stuff” we see or use every day for other purposes that we can also use to benefit our modeling creativity.

Paul's first segment will be on our January 22, 2025 show. If you have an idea or want to comment about this new segment contact Paul at: [admin@kershawcraftsmankits.com](mailto:admin@kershawcraftsmankits.com)

## Organizational Sponsors for New Tracks Modeling

Thanks to our current Sponsors for their financial support to help pay for Shows, Zoom, YouTube, and other related out of pocket costs.



Brennan's Model Railroading  
<https://www.brennansmodelrr.com/>  
 (816)-252-4605



O Scale Central  
<https://oscalecentral.com/>



National Association of S Gaugers  
<https://www.nasg.org/>



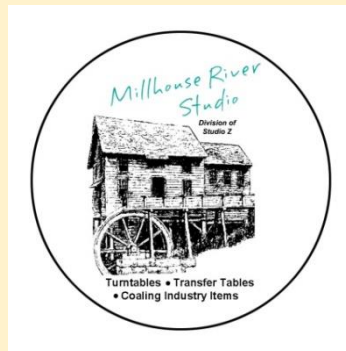
National Capital Trains  
<https://nationalcapitaltrains.com/>

Mainline Hobby Supply  
<https://mainlinehobby.com/>



American Models  
<https://americanmodels.com/>

New Creations Victorian Railroad Buildings, LLC  
<https://newcreationsvictorian.com/>



Millhouse River Studio  
<https://www.studiozphoto.com/Millhouse.html>

## **Individual and Company 2024 Donations for our 2025 Scholarships**

**Individual donors in 2024 for our 2025 scholarships are:** David Menard, Gerald, Linda Feeney, Jim Kellow, MMR, Ft Ron Walters, Bob Charles, MMR, Jeff Zigley, Bob Davidson, Jim Foley, Anonymous, Greg Cassidy, Jamie Bothwell, Michael Gorczynski, Rich Randall, Steve Sherrill, Jeff Jordan, Pat Rivard, Bill Bunce, Martin Brechbiel, MMR, the Anonymous kick-off donor, and James Koryta

Thank you all so much for the leadership and financial commitment you have made to our young future modeler's education. Your help is greatly appreciated!

Company donations are greatly appreciated and will be recognized. Companies that donate \$250 in any annual scholarship cycle will be identified as Brass Donors; Silver Donors will be recognized for a \$500 contribution, Gold Donors for a \$750 contribution and Platinum Donors for a \$1,000 contribution. Donors who contribute at least \$2,000 will be listed as a specific scholarship sponsor. Please contact us at: [ntms@newtracksmodeling.com](mailto:ntms@newtracksmodeling.com) to arrange for your corporate donations. Donate early to maximize your exposure. Remember, your contribution will help the young modelers who are the future of our hobby.

**We are most pleased and grateful to announce a 2025 \$1000.00 Platinum Donor:**

### **Platinum Corporate Sponsors**



**Amherst Railway Society**

<https://amherstrail.org/>



I am pleased and very grateful to announce our current 2025  
\$250.00 Brass Donors:

### Brass Corporate Sponsors



Brennan's Model Railroad  
<https://www.brennansmodelrr.com/>  
owned by Dennis Brennan



Great Scale Model Train Show  
<https://www.gsmts.com/>  
produced by Scott Geare



The Model Railroad Resource LLC  
<https://sscaleresource.com/WP/>  
<https://oscaleresource.com/WP/>  
owned by Amy and Dan Dawdy



Kershaw Craftsman Kits  
<https://kershawcraftsmankits.com/>

American Models  
<https://americanmodels.com/>



WiFi Model Railroad  
<https://www.wifimodelrailroad.com/>  
owned by WiFi Model Railroad

## T-Track for S and O Scale!

Allen Toney wrote on the T-Track Facebook group the following information.

“Someone I met at the Indy O scale meet is taking this idea and upscaling it to handle 2 rail O scale. With that scale taking such large curves, modular layouts eat up space fast and get very heavy with legs/support structure. His idea is to upscale this just enough to allow it to work for the scale, yet still be fairly lightweight and easier to transport. He is working with someone that can professionally cut the wood to offer module kits. Should be interesting and a real boon to the 2-rail side of O” (<https://www.facebook.com/groups/ttrak/>)

Brian Mills: “I don't know who maintains it, but there have been standards done for O scale T-TRAK. They're on the T-TRAK wiki.”

<http://ttrak.wikidot.com/t-trak-standards>

<https://ttrak.wdfiles.com/local--files/t-trak-standards/T-TRAK%20Standards%20%28wiki%20version%29.PNG>

---

## NEW TRACKS MODELING --- MENTORING SCHOLARSHIP

We have some exciting news regarding the Scholarship to report. As part of our efforts to increase public awareness of our scholarship program to young adults and potential donors, we are now partnering with manufacturers to support our scholarship program by including information about the program in their advertising and in their kits. This will help show how these companies support helping our youth in reaching their educational goals. While some of these companies also support the scholarship with financial donations, which is not a requirement of this new program. Here's an example of what a promotional insert looks like:



IS PROUD TO SUPPORT THE

### NEW TRACKS MODELING --- MENTORING SCHOLARSHIP

As the only non-profit organization  
sponsoring undergraduate and technical  
school scholarships for young model  
railroaders in the U.S., New Tracks  
Mentoring is helping ensure that our great  
hobby will be around for generations  
to come.

Please join us in supporting the  
scholarship.

To learn more, get an application,  
or make a donation, scan the QR code or visit:  
[www.newtracksmodeling.com/scholarship](http://www.newtracksmodeling.com/scholarship)

Questions? E-mail us at:  
[NTMMS@newtracksmodeling.com](mailto:NTMMS@newtracksmodeling.com)



If you are, or know of, any manufacturers or retailers who would consider participating in this new program, please have them contact us at: [NTMMS@NewTracksModeling.com](mailto:NTMMS@NewTracksModeling.com)

To learn more about this program, or how to apply for or donate to the Scholarship, please visit [www.newtracksmodeling.com/scholarship](http://www.newtracksmodeling.com/scholarship)

If you have any questions, please contact Bob Davidson at  
[NTMMS@newtracksmodeling.com](mailto:NTMMS@newtracksmodeling.com)

## **Regularly Scheduled Segments that you can see weekly on New Tracks Modeling**

### **Scratchbuilder's Corner**

by Martin Brechbiel, MMR ([Martin.Brechbiel@newtracksmodeling.com](mailto:Martin.Brechbiel@newtracksmodeling.com))

Scratchbuilder's Corner presents aspects of scratchbuilding primarily with wood as the medium to build structures and rolling stock, but includes the use of other materials such as styrene, brass, resin, and other casting materials as appropriate.

Intentions here are to teach & share techniques and "tricks" that can be adapted into your scratchbuilding projects working from simple projects through those of increasing complexity.

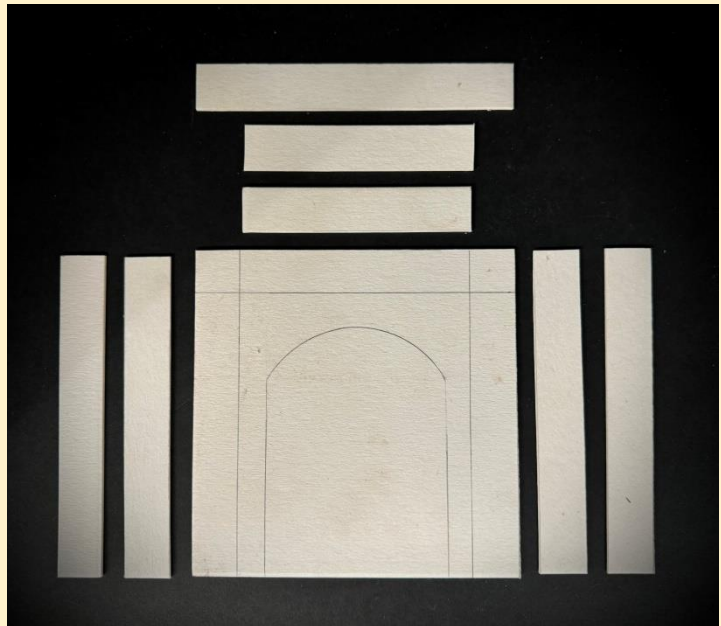
Scratchbuilder's Corner continued with a build of "The Towerless House" derived from the Branchline Trains Laser Art Tower House kit through October.



### **Scratchbuilding a Layout - Modeling a Tunnel Portal From Matboard**

by Tom Farrell ([tfarrell60@comcast.net](mailto:tfarrell60@comcast.net))

Modeling an On30 concrete tunnel portal from Matboard is an affordable and effective way to add realistic infrastructure to your layout. Starting with the Matboard, a portal can be cut and layered to achieve a convincingly textured and dimensional front. Stacking and gluing together several layers enhances the thickness and rigidity, creating a 3D effect that resembles cast concrete.



A Matt Board constructed portal





can achieve an impressively realistic look by painting the many surfaces in gray tones, adding weathering powders for stains or grime, and using colored pencils to mimic the lines between concrete sections. This technique allows for a customized, visually appealing structure that brings depth and detail to your scene.

The making of  
“Modeling a Tunnel

From Matboard” is scheduled for a “Watch me Build” feature on the New Tracks Modeling Live YouTube show this November. The show airs every Wednesday evening at 7:00 PM ET, with all episodes recorded, segmented, and available on YouTube for convenient viewing anytime.

---

## **A New Monthly Segment for our Zoom Show**

Paul Reeves, owner of Kershaw Models, will host a new monthly segment called:

### **“Using our Imagination with Everyday Inspiration”**

Paul, with the creator of this segment, Chris Course, and his first guest Dennis Brennan will be on our December 18, 2024 show. Please watch this segment as it will give you a great idea of what you can expect from Paul in the future.

---



## New Tracks Modeling “MY BUILD” 2024

by Chris Course ([railrunner130@hotmail.com](mailto:railrunner130@hotmail.com))

Model railroading is about sharing and the monthly MY BUILD is your opportunity to share and show off your build with the world. Trains, structures, or boats, it doesn't matter. It doesn't have to be your latest build. Heck, it could even be something you found at a yard or estate sale and just thought was neat. Or, maybe if you're stuck on something, need a different technique, or are stumped on how to proceed on a project. This is a good part of the show to ask questions. Please ask. We can help. The October My Build is on YouTube at:

[https://www.youtube.com/watch?v=FZFI\\_ipieBY](https://www.youtube.com/watch?v=FZFI_ipieBY)

Every other month we have a “theme.” These are not rigid. If you can find something to share that fits in a category, regardless of being “outside the box”, that is ENCOURAGED!

The schedule and topics for the **2024-2025** My Builds:

<b>November</b>	Free for all! Anything goes!
<b>December</b>	Interiors, insides of buildings, engine houses, etc.
<b>Jan 2025</b>	Free for all! Anything goes!
<b>February</b>	Kitbashes, Scratchbuilds;
<b>March</b>	Free for all! Anything goes!
<b>April</b>	Automation/Animation. Make it move!
<b>May</b>	Free for all! Anything goes!
<b>June</b>	Water. Waterfront buildings, wharves, boats, covered bridges, water tanks, anything water related
<b>July</b>	Free for all! Anything goes!
<b>August</b>	Harvest: farm equipment, grain elevators, hopper cars, mills, tractors, agriculture, barns, chicken coops, livestock, cattle pens/ranching, cattle cars, reefer cars;
<b>September</b>	Free for all! Anything goes!
<b>October</b>	Layouts. Finished, In-progress, Switching layouts, Modules, Dioramas

**November** Free for all! Anything goes!

**December** Interiors, Insides of buildings, engine houses, cabooses

---

## “I feel so stupid”

By Jim Kellow, MMR

I honestly believed all these years that readers of my articles would build and provide the feedback they promised when winning one of the products provided in the Manufacturers Contest Drawings I included in my articles. I thought that readers learning about a manufacturer and getting the opportunity to build one of their products was good for manufacturers and modelers and that the modeler who won a prize would show his appreciation by building the model and giving feedback to the manufacturer. STUPID ME.

These comments from a manufacturer show why I told him to forget offering a Christmas prize this year and why “I FEEL SO STUPID”. Oh well, I guess we all have to live and learn some lesson the hard way.

I apologize to all those manufacturers who did not hear from their contest drawing winners. What makes me feel even worse is I personally called each winner and congratulated them on winning and heard them tell me how happy they were about winning. I even sent follow up emails reminding them to please provide feedback about building the model. Still nothing from some of them.

This Manufacturer’s comment was the final straw for me:

“I’m okay to offer a prize if you wish. However, historically I have not heard back from any of the prize winners (except one maybe and that was just once because he kept his promise to provide the feedback). My wild guess is that people are okay if they get anything free, so they will enter a drawing. However, for a new product, it’s not out of “want” or “desire”. When the winner gets his/her prize, it’s not valued much because it was received for “free” and is probably tossed aside for a later time. If you still think it’s a good idea in general, I’m fine with it.”

I told him to forget the Prize idea. It’s time I wake up and recognize the readers and manufacturers reality of the Contest Drawings.

**Gosh! I FEEL STUPID. BUT NO MORE CONTEST DRAWINGS**

Any comments my email is: [jimkellow@newtracksmodeling.com](mailto:jimkellow@newtracksmodeling.com)

---

## What's to know about The Scales We Model In?

We have had many discussions with modelers who ask, “What is O scale or N scale all about? Does anyone really model in S scale? Can I really scratchbuild a model in N scale?” Your scale of choice may be G, O or O Hi-Rail, S, HO, or N, and there are others yet that modelers choose to build in today. However, we frequently know little about the details of other scales, are possessed of misinformation, or simple mythology.

To discuss this on a regular basis, New Tracks Modeling is running monthly segments on G, O, O Hi-Rail, S, S AF/Hi-Rail, HO, and N scale hosted by knowledgeable talented modelers in each scale. These modelers will try to answer your questions, present information about what is possible to accomplish, and then present what a new modeler entering a scale might need to consider.

The 2024/2025 schedule for “**The Scales that We Model In**” is:

<b>October</b>	2nd O, O-HR	9th HO, N	16th S & S HR	30th G
<b>Nov.</b>	6th O, O-HR	13th HO, N	20th S & S HR	27th G
<b>Dec.</b>	4th O, O-HR	11th HO, N	18th S & S HR	25th G
<b>Jan.</b>	1st O, O-HR	8th HO, N	15th S & S HR	22nd G
<b>Feb.</b>	O, O-HR	HO, N	S & S HR	G
<b>March</b>	O, O-HR	HO, N	S & S HR	G
<b>April</b>	O, O-HR	HO, N	S & S HR	G
<b>May</b>	O, O-HR	HO, N	S & S HR	G
<b>June</b>	O, O-HR	HO, N	S & S HR	G
<b>July</b>	O, O-HR	HO, N	S & S HR	G
<b>August</b>	O, O-HR	HO, N	S & S HR	G
<b>Sept.</b>	O, O-HR	HO, N	S & S HR	G
<b>October</b>	O, O-HR	HO, N	S & S HR	G
<b>Nov.</b>	O, O-HR	HO, N	S & S HR	G
<b>Dec.</b>	O, O-HR	HO, N	S & S HR	G

If you have specific questions you want addressed, or a specific person you would like to see interviewed on a scale segment, please contact the appropriate host. Their email addresses are shown below.

**G Scale Modeling** hosted by Steve Bittinger (11/27)October 30 See: [https://youtu.be/e\\_9pN\\_5fJwo](https://youtu.be/e_9pN_5fJwo)

Sponsored by New Creations Victorian Railroad Buildings LLC

**O Scale Modeling** hosted by David Schultz (11/6)

Sponsored by O Scale Central

[David.Schultz@newtracksmodeling.com](mailto:David.Schultz@newtracksmodeling.com)October 2 See: <https://www.youtube.com/watch?v=iXy1P8D6q0w&t=11s>**O Gauge Hi-Rail Modeling** hosted by Dennis Brennan (11/6)

Sponsored by Millhouse River Studio

[dennis.brennan@newtracksmodeling.com](mailto:dennis.brennan@newtracksmodeling.com)October 2 See: [https://www.youtube.com/watch?v=lppOch\\_lzck](https://www.youtube.com/watch?v=lppOch_lzck)**S Scale Modeling** hosted by Jamie Bothwell (11/20)

Sponsored by National S Gauge Association (NASG)

[jamie.bothwell610@gmail.com](mailto:jamie.bothwell610@gmail.com)October 16 See: <https://www.youtube.com/watch?v=x94MzykOBmw>**S Hi-Rail Modeling** hosted by Joel Weber (11/20)

Sponsored by American Models

October 16 See: <https://www.youtube.com/watch?v=fRcFB94-pEI>**HO scale Modeling** hosted by Gary Shurgold (11/13)

Sponsored by Mainline Hobby Supply

[gshurgold@gmail.com](mailto:gshurgold@gmail.com)October 9 See: [https://www.youtube.com/watch?v=Hcrn\\_ne2R9o](https://www.youtube.com/watch?v=Hcrn_ne2R9o)**N Scale Modeling** hosted by Bill Stimson (11/13)

Sponsored by National Capital Trains

October 9 See: <https://www.youtube.com/watch?v=NUrXsAdxOVc>

## Train Show Schedule

<p><b>42nd Annual Cleveland O Scale Meet November 2nd &amp; 3rd, 2024</b>  <b>Saturday 11am–4pm, Sunday 9am–1pm</b>  Admission: \$10.00, (Spouses and Children under 12 Free) Clinics / Model Contest / Presentations Supporting everything 1:48 Scale! O Scale 2 Rail, Proto48, O Scale Traction, O Scale Narrow Gauge  Interested or New to O Scale? We can help!  Location: UAW Local 1005 Large Hall 5615 Chevrolet Blvd. Parma, Ohio 44130 Free Parking 130 Tables available Dealer setup Saturday morning For all table information, contact <a href="#">Skyler Shippy</a></p>	<p><b>2024 Danville Indiana O/S Scale Event + CID/NMRA Train Show November 23, 2024</b>  Hendricks County Fairgrounds 1900 E Main St Danville, IN 46122 The Indiana S Scalpers are happy to announce our 3<sup>rd</sup> Annual O/S Scale Event. In 2023 the O/S Room nearly sold out, so make your vendor reservations early to ensure a sales table. New for 2024 is an S Scale Social Event Friday evening! Details will be coming.  Public Show Date: Saturday, November 23<sup>rd</sup>  Vendor/Layout Move-in Date: Friday, November 22<sup>nd</sup>  Vendor registrations should be directed to the Central Indiana Division (CID) Show Manager, Dave Mashino: <a href="mailto:danvilletrainshow@gmail.com">danvilletrainshow@gmail.com</a></p>
<p><b>Great Scale Model Train and Railroad Collectors Show</b>  <b>Feb 1<sup>st</sup> and 2<sup>nd</sup>, 2025 Sat. 9am-5pm; Sun 10am-4pm</b>  Admission Sat &amp; Sun \$12; Sun \$10  Maryland State Fair 2200 York Rd. Timonium, MD 21093  <a href="#">Click here for complete map and directions from all points; https://www.gsmts.com/</a></p>	<p><b>O Scale March Meet March 20-23, 2025</b>  Westin Lombard Yorktown Center  Lombard, IL The March O Scale Meet is a 3 day gathering of vendors, customers, clinics, and fun held annually in March in the Chicagoland area. This is the Chicago O Scale train show you've heard of. Website: <a href="http://marchmeet.net/">http://marchmeet.net/</a></p>
<p><b>Strasburg 2 Rail Train Show</b>  <b>April 12th, 2025 9am-1pm</b>  Strasburg Train Show: Two-rail swap meet at the Strasburg Fire Co., 203 W. Franklin St, Strasburg, PA Admission \$7, wives/children/military with ID free Tables \$35 for first table, additional \$30 per.  Great food, modular layout, clinics. Contact Richard Yoder EST evenings 484-256-4068  <a href="#">Click here for info.</a></p>	<p><b>Great Scale Model Train and Railroad Collectors Show</b>  <b>May 3<sup>rd</sup> and 4<sup>th</sup>, 2025 Sat. 9am-5pm; Sun 10am-4pm</b>  Admission Sat &amp; Sun \$12; Sun \$10  Maryland State Fair 2200 York Rd. Timonium, MD 21093  <a href="#">Click here for complete map and directions from all points; https://www.gsmts.com/</a></p>
<p><b>Strasburg 2 Rail Train Show</b>  <b>August 9th, 2025 9am-1pm</b>  Strasburg Train Show: Two-rail swap meet at the Strasburg Fire Co., 203 W. Franklin St, Strasburg, PA Admission \$7, wives/children/military with ID free Tables \$35 for first table, additional \$30 per.  Great food, modular layout, clinics. Contact Richard Yoder EST evenings 484-256-4068  <a href="#">Click here for info.</a></p>	<p><b>Strasburg 2 Rail Train Show</b>  <b>October 11th, 2025 9am-1pm</b>  Strasburg Train Show: Two-rail swap meet at the Strasburg Fire Co., 203 W. Franklin St, Strasburg, PA Admission \$7, wives/children/military with ID free Tables \$35 for first table, additional \$30 per.  Great food, modular layout, clinics. Contact Richard Yoder EST evenings 484-256-4068 <a href="#">Click here for info.</a></p>
<p><b>Send us your train show</b></p>	<p><b>information!!!!</b></p>





## 2025 Railroad Hobby Show

Tickets are NOW ON SALE for the 2025 Railroad Hobby Show!

January 25 and 26, 2025

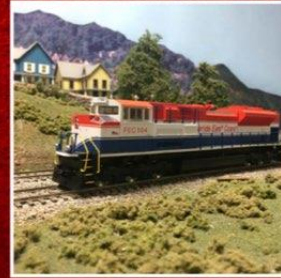
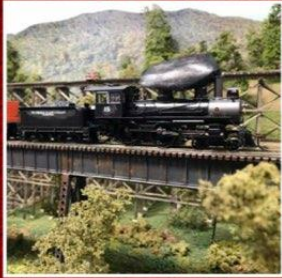
9:00 am - 5:00 pm on Saturday | 10:00 am - 4:00 pm on Sunday

<https://www.railroadhobbyshow.com/index.php>

[Tickets for the Big E](#)

# 14<sup>TH</sup> ANNUAL TRAINS for CHRISTMAS

*Come see this year's spectacular layouts  
at our NEW location!*



~ FREE ADMISSION ~

**SATURDAY, NOVEMBER 9**  
10:00AM - 4:00PM

**SUNDAY, NOVEMBER 10**  
11:00AM - 4:00PM

Contact Bill at  
**352.209.5422**  
wmquast@gmail.com

**Marion Oaks Community Center**

294 Marion Oaks Lane  
Ocala, FL 34473



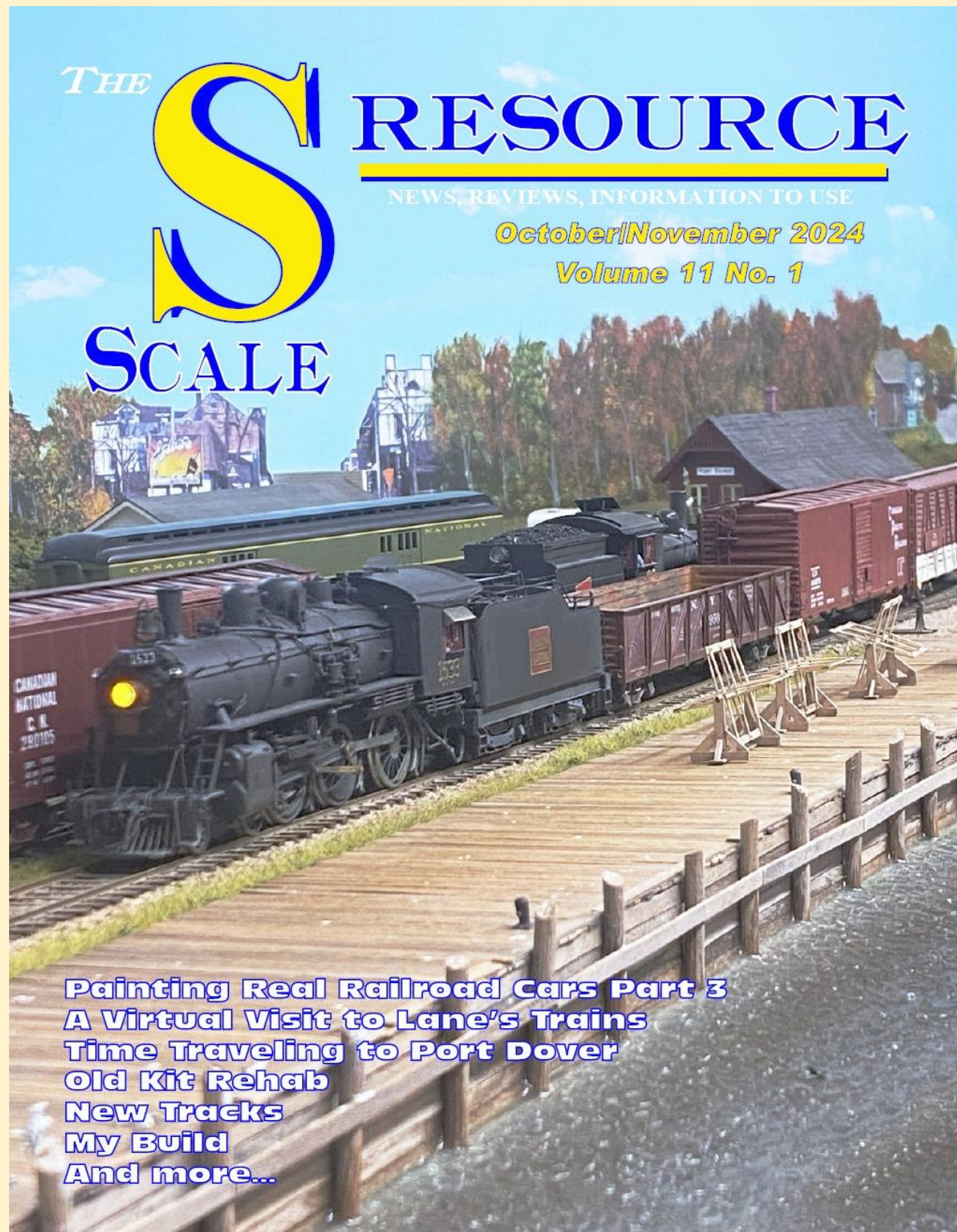
**352.854.2799**  
8585 SW Highway 200  
Ocala FL 34481



**Janie Quast**  
Realtor  
Sellstate NGR  
**352.208.3460**







**Painting Real Railroad Cars Part 3**  
**A Virtual Visit to Lane's Trains**  
**Time Traveling to Port Dover**  
**Old Kit Rehab**  
**New Tracks**  
**My Build**  
**And more...**



After 10 years of publication, we have decided to discontinue The S Scale Resource Magazine. The final issue was the October/November 2024 issue. This was not a decision we made lightly or quickly. However, for some time, it has been harder and harder to find articles.

With all the great press S scale has received recently, Model Railroader Magazine and Railroad Model Craftsman Magazine to name a few, many people may be looking to enter the hobby in S scale or converting from another scale. Once they do that, they may very well expect a scale magazine to help them along. Well, we were it. We started our 10th year of publishing The S Scale Resource and readership continued to grow. But submissions and advertising, which is all that pays the freight, has lagged. Not everyone sits on Facebook, and if that's the only way manufacturers promote products, they are missing out on a lot of modelers.

New people to S scale need to see what products are available and what manufacturers are out there, in addition to what others in the hobby are doing. It's your scale and it is up to you to help these new people, as well as, the whole community of like-minded modelers.

We were advised from a long time S scaler that "In case you are not aware, most other RR publications pay serious money for articles. Something in the \$75-80 per page is common. Plus more for cover photos. The most prolific S scale writers have earned considerable income from mainstream magazine payments."

We barely have enough advertisers to stay out of the red, so paying that kind of money for articles is not going to happen with The S Scale Resource. Keep in mind that staying out of the red means that the amount of time spent developing each issue and the work involved by us is not compensated. For whatever reason, we just can't get articles on layouts, building, or anything else for that matter. Manufacturers and dealers are not sending in News items which we publish at no cost.

We were advised to open our magazine up to Flyer and Hi-Rail as well. There is no way we are going to do that as we would be running up against The Dispatch which is the NASG's (National Association of S Gaugers) magazine. Plus, we feel it would detract from what we were trying to provide – a truly scale publication.

We are not going to blame anyone or anything. It is what it is. S is a great scale with a huge potential for growth, but we have nothing to publish, and therein lies the problem.

We personally feel it's a shame that with the great press scale S is getting from the big two magazines as new people enter the scale that there will no publication to help them on their journey.

Please note the following resources available to the S Scale modeler:

- NASG (<https://www.nasg.org/>) membership includes The Dispatch magazine bi-monthly which covers all of S scale.

- New Tracks Modeling (<https://newtracksmodeling.com/>) Observations newsletter which is for all modelers and scales.
- New Tracks weekly Zoom show every Wednesday at 7:00 EDT on YouTube. You can simply watch on YouTube or sign up at New Tracks and receive a Zoom link to participate.

We have met many new friends within the scale S community, and it's been a fun journey.

The Website, <https://sscaleresource.com>, will remain as is for now with all the back issues, unless it becomes cost prohibitive in the future.

We're sad to be ending the magazine and would like to thank everyone for their support over the last 10 years.

Amy & Dan Dawdy

---

## To all S Scale Modelers!

I know a lot of 1/64 modelers are going to miss the S Scale Resource magazine. Thank you, Amy and Dan Dawdy, for publishing the Magazine for the S Scale community the last 10 years. All magazine subscribers have my personal thanks for reading my **New Tracks Modeling** articles in the magazine over the last 7 years. I hope my articles were beneficial in helping improve your modeling. I also hope we can remain in touch

Therefore, I want to invite all 1/64 S scale and S High-Rail Modelers to subscribe to our New Tracks Modeling website so you can receive our monthly newsletter, edited by Martin Brechbiel MMR, ([Martin.Brechbiel@newtracksmodeling.com](mailto:Martin.Brechbiel@newtracksmodeling.com)) Our newsletter includes articles on all scales including S scale and S Hi-Rail.

You will also receive the Zoom login link and agenda for our weekly Wednesday evening live Zoom shows at 7pm Eastern Time. These shows are also live streamed to our YouTube channel **New Tracks Modeling**. Our channel provides also access to over 1,400 videos of our past shows.

Our Zoom shows provide weekly discussions on all scales including separate monthly segments on S Scale sponsored by the NASG and hosted by Jamie Bothwell, email: ([jamie.bothwell610@gmail.com](mailto:jamie.bothwell610@gmail.com)) and S Hi-Rail sponsored by American Models, and hosted by Joel Weber, email: ([weber1b14@gmail.com](mailto:weber1b14@gmail.com)).

Please contact Martin, Jamie and Joel for more information and discuss 1/64 issues you would like them to address. We all look forward to meeting you and having your involvement in our New Tracks Modeling activities. Together we can mentor modelers and get more modelers building more models in all scales and gauges.

---



## Volunteers Working on the Real EBT Railroad

From Gene Tucker:

Nine of us met in Robertsdale. We were able to get the following done:

The new bridge was finished and is now useable.

The gauge was checked and corrected where necessary for about 500' of track south of the new bridge.

It is now available for use by railbikes, handcars and speeders.

Assisting yesterday were: Brian Wolfe, Steve Jackson, Larry Fuchs, Todd Johnson, Daniel Lane, Ron Elliott, John Widmeyer and Rick Rourke.



New Robertsdale bridge (1) ( G. Tucker photo)



New Robertsdale bridge (2) ( G. Tucker photo)

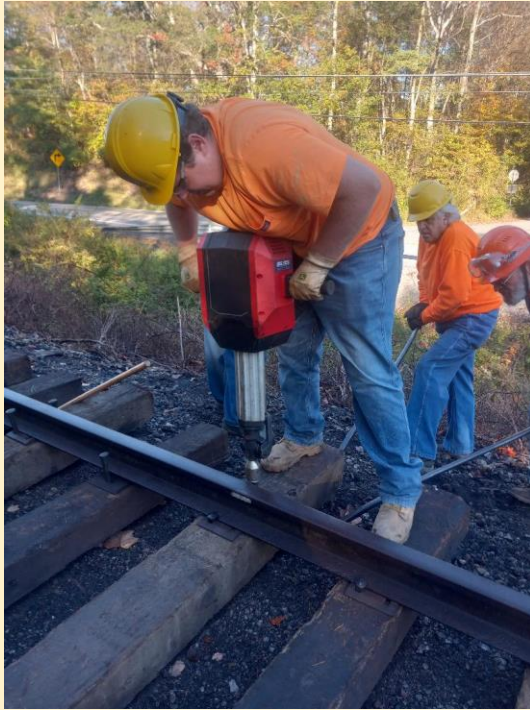
We had an excellent and very productive work session on Thursday, October 10th.

We were able to:

- Assemble track to 2,200' south of the overhead bridge at Jordan Summit (and 800' from McCoy Road)
- Gauge and spike up the track to 2,050' south of the bridge.



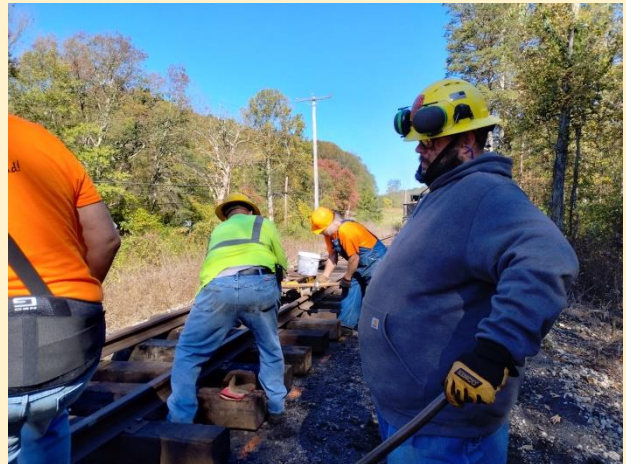
Eleven of our number assisted in yesterday's work: Brian Wolfe, Al Gallo, Daniel Lane, Joel Myers, Jack Fornadley, John Quinn, Larry Fuchs, Tom Hesketh, Dave Padula (new - welcome!), and Dave Johnson.



Al Gallo runs the spiking gun  
Oct 10th (G. Tucker photo)



Dave Padula spikes up  
Oct 10th (G. Tucker photo)



Nipping up - Oct 10th (D. Johnson  
photo)



Larry Fuchs & Al Gallo apply bolts

Oct 10th (G. Tucker photo)

We had one work session this week, but we got a good bit done.

Track was assembled to a point 2,350' south of the overhead bridge at Jordan Summit (and 650' north of the McCoy Road crossing).

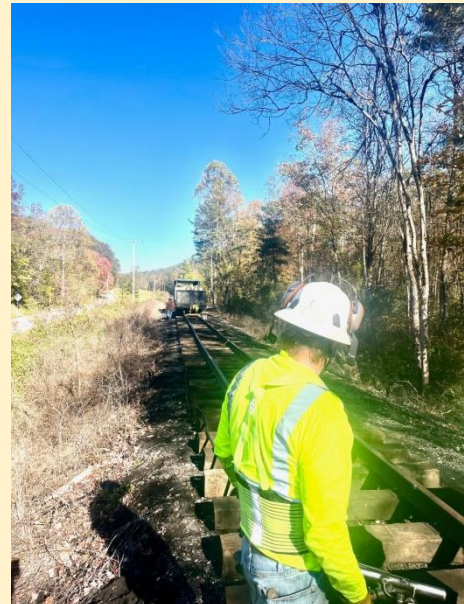
Track was gauged and spiked to a point 2,175' south of the bridge.

The ROW was cleaned up, removing OTM (Other Track Material), trash and ferrous metal, from the IOOF Cemetery Road south to the railhead.

Assisting yesterday were: John Quinn, Ron Elliott, John Widmeyer, Rich Poletto (new - welcome!), and Jack Fornadley.



John Quinn sets a spike - Oct 17th (Jack Fornadley photo)



Track looking north - Oct 17th (Jack Fornadley photo)



Track looking south - Oct 17th (Jack Fornadley photo)

## 1:64 Scale Transfer Station w/Animation and American Models Freight Cars & Trucks



Created in collaboration by:

**CatzPaw Innovations LLC, New Creations Victorian Railroad Buildings LLC,  
and American Models**

*Kit Contents by Manufacturer*

### ***New Creations Victorian Railroad Buildings, LLC***

The Transfer Station in S-Scale (1:64)

### ***CatzPaw Innovations, LLC***

The *InvisiTrax™ Transport System* components needed to move the pallet jack through the station: all track components, N20 motor, motor speed & direction controller, AA battery holder, magnets, and other ancillary items including: the Ride-on Pallet Jack, and Pallet Jack Operator (Pallet-Jack Jack). An optional *Accessory Pack* can be added that contains: Logistics Manager with Clipboard, Worker Lifting Cardboard Box, 48 x 48 scale-inch Pallets (x4), 55 Gallon Steel Drums (x2), Large Crates (x2), and Cardboard Boxes (set of four).

### ***American Models Products***

A Voucher containing information and a code to receive \$45.50 worth of products from American Models. You will be able to use this voucher on the American Models website to select from a wide range of freight cars, truck trailers, and more.

**Pre-order now to receive a 20% discount!**

<https://tinyurl.com/AnimatedTransferStation>



## New Tracks Show Schedule – October/November

(Register at: <https://newtracksmodeling.com/>)

<p><b>Nov. 6</b>  Welcome &amp; Announcements; Jim Kellow  O Scale Modeling with David Schultz  O High Rail with Dennis Brennan  Building in Brass with Bernd Fanghanel  Build Along of New Creations Victorian  Railroad Buildings LLC Kit (G Scale) with  Steve Bittinger and Steve Sherrill  Build Along of New Creations Victorian  Railroad Buildings LLC Kit (O Scale) with  Bill Davis  Scratchbuilder's Corner 41 with Martin  Brechtel  Scratchbuilding his layout with Tom Farrell  “What Do You Want to Talk About” with  Steve Sherrill  The Caboose with Phil Edholm, Tom  Farrell and Jeff Jordan -Video of Pittsburg  Convention Contest; Layout &amp; prototype  tours</p>	<p><b>Nov. 13</b>  Welcome &amp; Announcements; Jim Kellow  HO Scale Modeling with Ed O'Rourke  N Scale Modeling with Bill Stimson  John Anfinson discusses his club in  Deadwood SD  “Building your Dream Layout one Diorama  at a time” with Matt Woods Part 1  Build Along of New Creations Victorian  Railroad Buildings LLC Kit (G Scale) with  Steve Bittinger and Steve Sherrill  Build Along of New Creations Victorian  Railroad Buildings LLC Kit (O Scale) with  Bill Davis  Scratchbuilder's Corner 42 with Martin  Brechtel  Scratchbuilding his layout with Tom Farrell  “What Do You Want to Talk About” with  Steve Sherrill  The Caboose with Phil Edholm, Tom  Farrell and Jeff Jordan -Video of Pittsburg  Convention Contest; Layout &amp; prototype  tours</p>
<p><b>Nov. 20</b>  Welcome &amp; Announcements; Jim Kellow  S scale Modeling with Jamie Bothwell  S gauge Modeling hosted by Joel Weber  Build Along of New Creations Victorian  Railroad Buildings LLC Kit (G Scale) with  Steve Bittinger and Steve Sherrill  Build Along of New Creations Victorian  Railroad Buildings LLC Kit (O Scale) with  Bill Davis  <b>MY BUILD with Chris Coarse and Greg  Cassidy</b>  The Caboose with Phil Edholm, Tom  Farrell and Jeff Jordan -Video of Pittsburg</p>	<p><b>Nov. 27</b>  Welcome &amp; Announcements; Jim Kellow  G Scale Modeling with Steve Bittinger  What's Going on in OSC. Why O Scale  with David Vaughn  Building in Brass with Bernd Fanghanel  Build Along of New Creations Victorian  Railroad Buildings LLC Kit (G Scale) with  Steve Bittinger and Steve Sherrill  Build Along of New Creations Victorian  Railroad Buildings LLC Kit (O Scale) with  Bill Davis  “Building your Dream Layout one Diorama  at a time” with Matt Woods. Part 2</p>



Convention Contest; Layout & prototype tours	Scratchbuilder's Corner 43 with Martin Brechbiel Scratchbuilding his layout with Tom Farrell "What Do You Want to Talk About" with Steve Sherrill The Caboose with Phil Edholm, Tom Farrell and Jeff Jordan -Video of Pittsburg Convention Contest; Layout & prototype tours
<b>Dec. 4</b> Welcome & Announcements; Jim Kellow O Scale Modeling with David Schultz O High Rail with Dennis Brennan Watch Me Build the Tom Yorke Becky Sue House of Beauty kit By Frenchman River Model Works Part 1 with Tom Ferrell Scratchbuilder's Corner 44 with Martin Brechbiel "Building your Dream Layout one Diorama at a time" with Matt Woods. Part 3 Making figures with DAZ Studio and Blender with Earl Hackett "What Do You Want to Talk About" with Steve Sherrill	<b>Dec. 11</b> Welcome & Announcements; Jim Kellow HO Scale Modeling with Ed O'Rourke N Scale Modeling with Bill Stimson Watch Me Build the Tom Yorke Becky Sue House of Beauty kit By Frenchman River Model Works Part 2 with Tom Ferrell KATO USA with KATO Representative Scratchbuilder's Corner 45 with Martin Brechbiel "Building your Dream Layout one Diorama at a time" with Matt Woods. Part 4 "What Do You Want to Talk About" with Steve Sherrill
<b>Dec. 18</b> Welcome & Announcements; Jim Kellow S scale Modeling with Jamie Bothwell S gauge Modeling hosted by Joel Weber Watch Me Build the Tom Yorke Becky Sue House of Beauty kit By Frenchman River Model Works Part 3 with Tom Ferrell Announcement of the Paul Reeves owner of Kershaw Models, host for "Using our Imagination with Everyday Inspirations for our modeling" with Dennis Brennan and Chris Course <b>MY BUILD with Chris Coarse and Greg Cassidy</b>	<b>Dec. 25</b> Welcome & Announcements; Jim Kellow G Scale Modeling with Steve Bittinger Watch Me Build the Tom Yorke Becky Sue House of Beauty kit By Frenchman River Model Works Part 4 with Tom Ferrell Wrap up 2024 year and project 2025 with Jim Kellow Wrap up 2024 Scholarship year and project 2025 with Bob Davidson

## Building Your Dream Layout One Diorama at a Time

Starting on November 13, 2024 Matt Woods will begin his series on our Zoom Show with an introduction about his Diorama Modeling and the techniques he uses to create his artistic scenes. Matt is a talented well-known artistic modeler to many On30 modelers.





# The Fort Pitt Brewery Fiasco on the Puerto Borracho Railway

A Scratchbuild & Story by Tom Farrell

The Fort Pitt Brewery Fiasco on the Puerto Borracho Railway started with ambition, as many failed enterprises do. Fort Pitt Brewery, renowned for its classic American lager, was thriving in Western Pennsylvania and serviced by The Rustic Buff & Old Gothic Railroad. Flush with success, the brewery's executives set their sights on a faraway world serviced by the Puerto Borracho Railway, a narrow-gauge line meandering through a patchwork of forgotten villages, rugged mountains, and sun-drenched desert somewhere south of the border. This quaint route, they believed, was the perfect avenue to introduce their golden brew.

At the far end of the line was Puerto Borracho, a small but lively town tucked between rocky cliffs and winding narrow gauge rails. The town had built a reputation for two things: tequila and fiestas. What the executives at Fort Pitt didn't know—or perhaps ignored—was that the people of Puerto Borracho weren't exactly thirsty for anything besides their beloved tequila. But with visions of untapped markets and potential profits dancing in their heads, they forged ahead.

Fort Pitt built a modest distribution terminal right on the edge of town, a handsome but small wooden structure that looked almost out of place against the harsh desert backdrop and the stucco construction of everything else in these parts. Trainloads of beer soon began to roll in, ready to quench the imagined thirst of the locals. The plan was straightforward: the terminal would store the beer, distributing it to cantinas and shops along the railway, turning Puerto Borracho into a profitable hub for Fort Pitt's expansion.

But the locals weren't buying it—literally.

The people of Puerto Borracho, with their quick grins and hearty laughter, raised their shot glasses when the first crates of beer arrived. But when it came time to drink, they stayed true to their traditions. Tequila, mezcal, and the occasional cerveza from

a neighboring region were all they craved. No matter how fine Fort Pitt's lager, it was foreign to their palates. The cantina owners, halfheartedly stocking their shelves, watched as the bottles



gathered dust. Patrons waved off the idea of swapping out tequila for beer with a chuckle, as if the notion itself were a joke.

Months passed, and the terminal sat largely silent. The people of Puerto Borracho joked that the new wooden building was a mirage, or worse, cursed by the agave spirits. The crates of beer, stacked neatly inside, waited for customers who never came. Even the railway workers, sympathetic to the brewery's plight, weren't enough to make a dent in the surplus. One by one, the local shops stopped ordering shipments. The town's traditions were simply too strong to be swayed by marketing campaigns, free samples, or the brewery-sponsored events with live music and dancing. At the end of each night, the crowds toasted with tequila, as they always had.

Eventually, Fort Pitt pulled the plug. The terminal was abandoned, a relic of corporate optimism that quickly fell into disrepair. The once-pristine wooden structure, now weathered by the unforgiving desert sun, began to rot and the boards creaked in the wind. No one cared to maintain it. A "Condemned" sign (in Spanish)

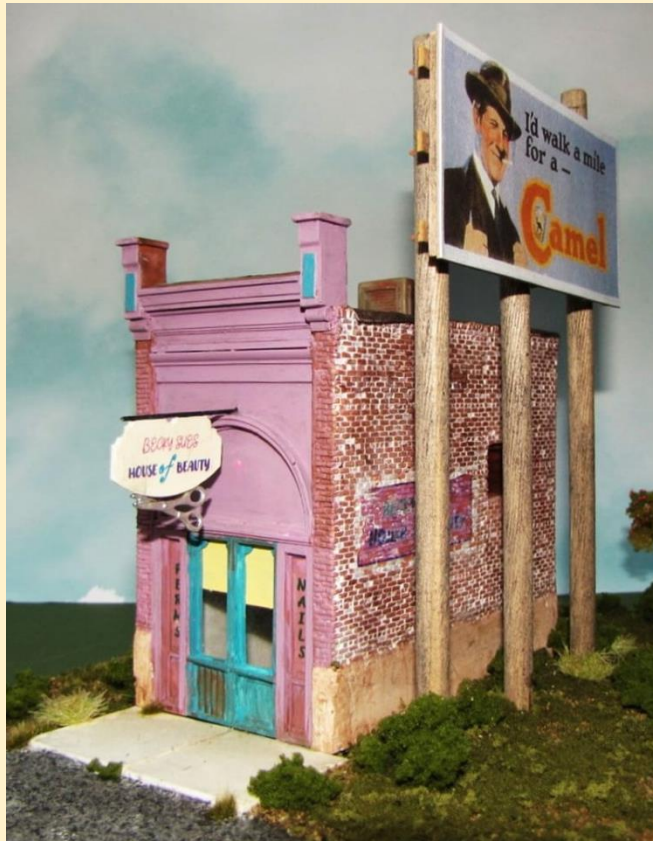


was hastily nailed to the door, as though the brewery had given up as swiftly as it had arrived.



Now, the terminal stands as a ghostly reminder of the failed venture. The people of Puerto Borracho still gather for their fiestas, still raise their glasses to the sky, but always with tequila in hand. They laugh and tell stories of the time a brewery from far away thought they could change the spirit of the town with beer. It was a failed business, yes—but as they say with a shrug and a smile, it was worth a try...





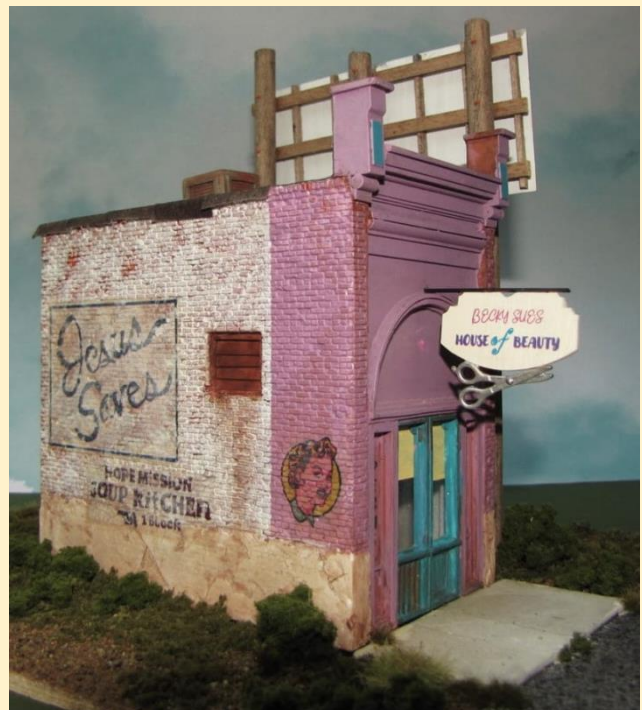
## New Tracks Master Model Builder Partners with Frenchman River Models on New Tom Yorke Kits

Starting on December 4, 2024, Master Modeler Tom Farrell will begin a partnership where he constructs the newly released O-Scale kits (1/48) designed by Tom Yorke and produced by Frenchman River Model Works. Each release will be featured as a "Watch Me Build" segment for the live New Tracks Modeling YouTube show, aired every Wednesday at 7:00 PM ET.

The series will kick-off with the "Becky Sue's House of Beauty" kit, which Frenchman River Model Works will release in August/September 2024.

Here is a link to the new structure:  
<https://frenchmanriver.us16.list-manage.com/track/click?u=d3c64d7e301361726ba4ae1ab&id=cbd3262093&e=b5aaae6bd3>

Future shows on this "Watch me Build" series will be scheduled based on the release dates of new Tom Yorke designs or with a featured model presently offered by Frenchman River Model Works.





# New Tracks Modeling announces

## **“S Scale Animated Scene”**

### **Kits you can Build -- Scenes you can Create**

The “Animated Transfer Station with Freight Car and Trailer” was created in collaboration by CatzPaw Innovations LLC, New Creations Victorian Railroad Buildings LLC, and American Models.

**American Models:** <https://americanmodels.com/>

Email: [americanmodels@sbcglobal.net](mailto:americanmodels@sbcglobal.net)

Telephone: (734) 449-1100



**CatzPaw:** [www.catzpaw.com](http://www.catzpaw.com)

Email: [info164@catzpaw.com](mailto:info164@catzpaw.com)

Telephone: (770) 847-0076



**New Creations Victorian Railroad Buildings LLC**

Website: <https://newcreationsvictorian.com/>

Email: [eauchiche@gmail.com](mailto:eauchiche@gmail.com)

Telephone: (661) 444-9656



The kit will be animated using the InvisaTrax™ Transport System, this along with the custom Transfer Station building, will provide the core elements for a scene that can be displayed independently or integrated into your 1:64 scale model railroad. In addition, you will receive a discount code that can be used at American Models where you can select from a wide range of freight cars, truck trailers, and more.

When available, each manufacturer will have a link on their website that will take you directly to the product page where the kit can be ordered. The main components of the kit, the building and animation components will be shipped directly to you in one package. The remaining products

will be selected by you from the American Models website and will be shipped by American Models in a separate package.

Many of us remember when American Flyer produced operating accessories that provided animation and functionality to create scenes on our model railroads. In fact many of us still buy them, if we can find them, in any reasonable condition. This new scene is not a recreation of an old American Flyer accessory, but rather a new scale 1/64 animated scene using new technology, and materials. The scene is suitable for use by S scale, American Flyer, and Hi-Rail model railroaders, or by any other modeler who creates 1/64 displays or dioramas.

The “Animated Transfer Station” reflects the movement of products between rail and truck. The core components include: a laser cut Transfer structure by New Creations Victorian Railroad Buildings LLC, 3D print figures and accessories along with the relevant InvisaTrax™ animation components by CatzPaw Innovations LLC, and the selection of rail cars and/or truck trailers from American Models. The kit will include detailed assembly instructions making sure that anyone can successfully create a unique S scale (1:64) animated scene. This is a great way to enhance your modeling experience.

The best part is all the work of designing the core scene, and engineering the technology, has been done for you. Your participation is to have fun modeling and to experience the thrill of creating your own personalized scene.

The “Animated Transfer Station” was available to preorder at the 2024 S-Fest St Louis Missouri Convention, October 25-27, 2024. For details about the S-Fest convention, go to their website: [trainweb.org/afsgsla](https://trainweb.org/afsgsla)

If you could not attend the S-Fest convention, you may preorder during the month of November by visiting the product’s webpage at: <https://tinyurl.com/AnimatedTransferStation> or by using the QR code provided in the November issue of the New Tracks Modeling

Observations Newsletter. Our newsletter is available to all of our website subscribers. For website subscription information please go to our website: [newtracksmodeling.com](http://newtracksmodeling.com).

When you pre-order using the above methods, you will receive a 20% discount off the kit. Pre-orders do require a 50% deposit due at time of the order. This deposit is nonrefundable; unless in the rare event the product is not brought to market, then the deposit will be refunded in full. The anticipated shipping date is mid-December 2024. You will be charged the 50% balance on/or around December 16, 2024. When the final payment is received, the main components of the kit, the building and animation components, will be scheduled for shipment. In addition, you will receive an email with a PDF document that will contain instructions and a code for you use to place your order for the American Models products of your choosing.

For questions about ordering contact any of the three participating manufacturers using the information at the beginning of this article.

If you like this concept or have suggestions for future S Scale Animated Scenes please contact Joel Weber, Chairman of our S Scale Animated Scene Advisory Committee ([weber1b14@gmail.com](mailto:weber1b14@gmail.com) or call at 630-977-9323).

If you just want to talk, gossip, or suggest other new concepts or projects you want New Tracks Modeling to investigate my email is [jimkellow@newtracksmodeling.com](mailto:jimkellow@newtracksmodeling.com)

---

## VENDOR'S CORNER



The Water and Tool Car in HO/HOn3 Scale by Conowingo Models. Formerly a Sugar Pine Models kit, we've modified it to fit into the Conowingo Models rolling stock line.

**ORDER YOURS TODAY**



## Moose Creek Trees Restocked!



The Moose Creek trees are selling very well- and for good reason. They're a great product.

We received in a whole forest-worth of trees because demand is that high!

These trees come in the following sizes - 1 inch, 1.5 inches, 2 inches, 3 inches, 4 inches, 5 inches and 6 inches. They're perfect for whatever scale you model.

**Order yours today!**



The PaxBug in HO Scale by Conowingo Models!

The PaxBug is a fictional relative of the BoxBug that we put out a few years ago.



**ORDER YOURS TODAY**

**Rusty  
Rail**

*New HO scale releases!*

RRS-H-35 - Here is a great little shop that can work in a town or out in a logging or mining camp. As you can see by the pictures it comes with an interior and a removable roof for display. It also comes with a nice set of castings including 2 new workbenches to place on the shop floor. Minor assembly using super glue required. Truck is not included. Shop measures 2 1/2" by 2" by 1 3/4" high. All resin castings come unpainted.

**[Click here to check it out](#)**



RRJP-H-44 - Here are the latest set of castings that comes with the small shop we just released. All resin casting and come unpainted.



[Click here to check it out](#)



RRWK-H-13 - Here are two new small workbenches from the new small shop that can fit inside or outside of a building. Great little eye catchers. All resin castings and come unpainted.

[Click here to check it out](#)



## *New O scale releases*

RRJP-O-25 - Here is a great little junk pile that will go great behind a auto repair shop. Measures 3 " by 1 1/4" by 1 1/4" tall. All resin casting and comes unpainted.

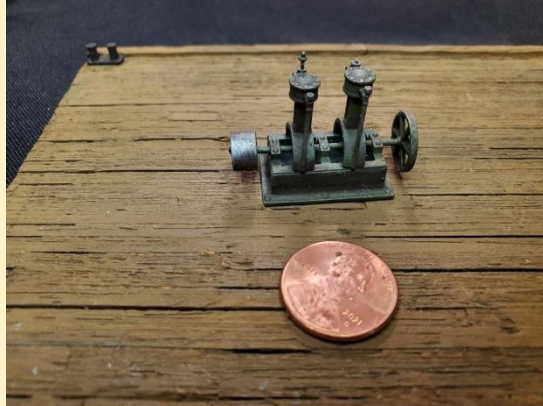
[Click here to check it out](#)





RRJP-O-26 - What do you do with old tires back in the day? Pile of old tires that can fit the side of a building or a field, Measures 3 1/4 " by 1 3/4" by 1/2" tall. All resin casting and comes unpainted.

[Click here to check it out](#)



Check out our new 3D printed Industrial Air Compressor kits in HO and O scale. May cost a little more but the detail is great.



O/On30 1:48 Scale Brick Firehouse





## *Designed and produced by James and Anna Cleveland*

After the original No 1 wooden firehouse burned down, the town of Stinkwater Crik built this brick firehouse to replace it. Despite the murmurings of suspected arson, the devastating fire was ultimately chalked up to the theory that volunteers weren't motivated to show up in time to extinguish the blaze, so the city also implemented the first paid fire fighter positions in the area. Cheers to progress!

This 2 story structure depicts a brick, single stall firehouse that was both functional and somewhat ornate and right at home anywhere from the 1900's to present. The tower attached to the firehouse was used to hang the hoses up to dry and the living quarters on the second floor housed the on-duty firefighters. The slight wave in the bricks belies the rumors that Mickey, the local mason, spends way too much time at the local tavern. The hose drying tower can be placed on either of the side walls as desired. A small footprint and tons of character make this an ideal addition to any small town or city scene.

### **Kit Contents:**

- 1 Resin Front Wall
- 2 Resin Side Walls
- 1 Resin Back Wall
- 4 Resin Tower Walls
- 1 Resin Bay Door
- 2 Resin Man Doors
- 1 Resin Brick Chimney
- 1 Resin Fire Hydrant
- Card and Tar Paper Roofing Material
- Lumber
- Fire Escape
- Window Glazing Material
- Styrene
- Aluminum Flashing

### **Actual Dimensions approximately:**

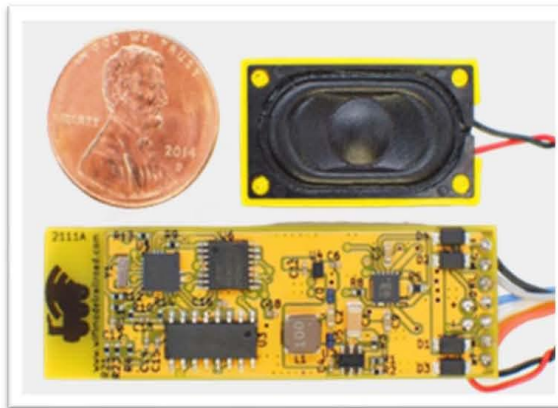
- 4.25" Wide across the front of the building
- 5.125" Wide with the Hose Drying Tower
- 6.75" Tall (Building)
- 7" Tall (Tower)
- 7.5" Deep

## **HO 1:87 Scale Brick Fire House**

***Coming December 15, 2024***

## Consisting with LocoFi™: Enhancing Model Railroad Control with WiFi Technology

Model railroading has always been a blend of engineering precision and creative expression. With the advent of LocoFi™, a WiFi-based control system, the hobby has seen a significant transformation. One of the most exciting aspects of LocoFi™ is its ability to simplify and enhance the process of consisting, or the operation of multiple locomotives together as a single unit. It is, in fact so



easy that you can create, break, re-create or re-configure consists on the fly with only a few taps in the LocoFi™ app and literally in a matter of seconds. Not only that, consisting with LocoFi™ comes with a host of other benefits like safety of your locomotives in the consist, having as many consists as you like and auto speed matching.

LocoFi™ revolutionizes consisting in model railroad control by offering a simple, powerful, and flexible control system. By leveraging WiFi and modern computing technology, it eliminates the need for complex wiring and programming, making the hobby more accessible and enjoyable for enthusiasts of all levels.

### ***Model Railroad Control Systems and LocoFi™***

Historically, model trains were controlled through direct current (DC) systems, where the speed and direction of the train were managed by varying the voltage on the tracks. This method had limitations in terms of controlling multiple trains independently. The introduction of DCC in the 1980s revolutionized the hobby by allowing multiple trains to be controlled on the same track through digital signals. However, DCC systems can be complex and expensive, requiring command stations, boosters, and proprietary controllers.

LocoFi™ represents a significant leap forward by eliminating the need for complex wiring and additional hardware. It offers advanced digital control even on a DC layout, bringing the best of both worlds (DC and DCC) and even more. To achieve that, each locomotive is equipped with a LocoFi™ decoder that transmits a WiFi signal. Operators can control their trains using a smartphone or tablet, with the LocoFi™ app, providing a virtual throttle and a host of other features.

One of the standout features of LocoFi™ is its simplicity. Unlike DCC, which often requires extensive setup and programming, LocoFi™ is designed to be user-friendly. The system supports multiple trains and engineers, allowing for independent control without the need for additional equipment. This ease of use makes it accessible to both beginners and seasoned hobbyists.

**LocoFi™ is the only wireless technology that supports Unlimited Locos and Unlimited Engineers with Unlimited Range of operation**

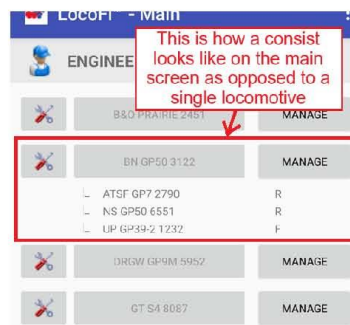
### *Understanding Consisting in Model Railroading*

Consisting, also known as multiple-unit (MU) operation, involves controlling two or more locomotives as a single entity. This practice is common in real-world railroading to distribute power and improve efficiency, especially for long or heavy trains. In model railroading, consisting adds a layer of realism and complexity, allowing hobbyists to replicate the operations of full-scale railroads.

Traditionally, consisting in model railroading has been managed through Digital Command Control (DCC) systems. DCC can be complex and requires significant setup, including programming each locomotive to respond to a single command and manual speed matching. This process can be daunting for beginners and time-consuming for experienced hobbyists.

### *LocoFi: Simplifying Consisting with WiFi Technology*

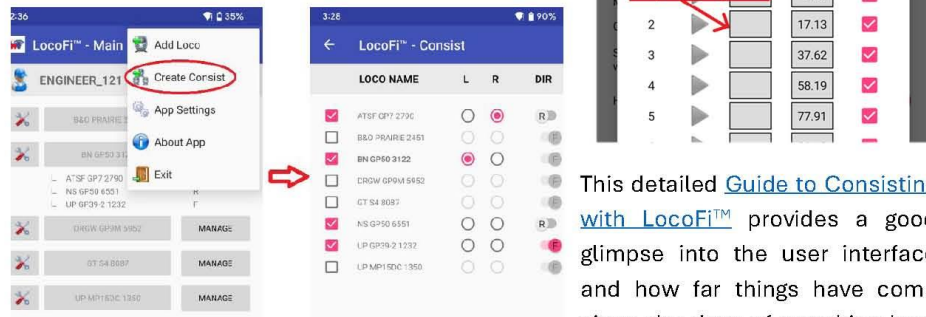
LocoFi™ simplifies the process of consisting by leveraging WiFi and modern computing technology. Each locomotive equipped with a LocoFi™ decoder can be controlled via the LocoFi™ app, providing an intuitive interface for creating and managing consists, making it accessible to hobbyists of all skill levels. LocoFi™ can handle multiple locomotives seamlessly. The app allows users to easily add or remove locomotives from a consist. The process of speed profile creation ensures automatic speed matching. This simplicity and flexibility ensures that hobbyists can create realistic and efficient consists without the technical hurdles associated with traditional systems. You can have as many consists as you want right at your fingertips.



The process of consisting with LocoFi™ starts with creation of a speed profile. A speed profile is essentially a speed table but defined for a given track voltage. The speed steps at which the speed values are calculated is based on a smart algorithm that optimizes the breakdown of speed steps. Choosing a higher number of speed steps will give the most accurate results. You can define up to 8 speed tables for various track voltages (so

that you can carry your locomotive to any layout and switch to that profile and run prototypically). You can even use speed profiles to define engine characteristics if run in reverse or high frequency PWM.

Once a speed table is defined for each of the locomotives that you want to consist, it's simply a matter of choosing which locomotives to consist and you are done! It's that simple. Speed matching is automatically done without having to approximate and estimate speeds.



This detailed [Guide to Consisting with LocoFi™](#) provides a good glimpse into the user interface and how far things have come since the days of punching keys

and tedious programming. Alternatively, visit our [YouTube channel](#) where you will find plenty of videos and playlists to learn more.

### Advanced Features for Realistic Operation

LocoFi™ offers several advanced features that enhance the realism and functionality of consisting. These include real-time speed synchronization, which ensures that all locomotives in a consist operate at the same speed, regardless of their individual characteristics. This is crucial for preventing derailments and ensuring smooth operation, especially on curves and gradients. For example, let's say one of the locomotives loses connection with the others, this will be detected and communicated to the other locomotives in the consist and bring the entire consist to a stop. This prevent unnecessary "dragging" and damage to the locomotives.

Additionally, LocoFi™ supports momentum settings, allowing hobbyists to replicate the behavior of real trains more accurately. These features provide a more immersive experience, as operators can fine-tune the performance of their consists to match specific scenarios and operational requirements.

LocoFi™ also offers a range of advanced **LocoFi™Exclusive** features and functionalities that not only enhance the model railroading experience but take it beyond what is currently offered or even possible by any other model train control system out there.



These include multiple speed profiles for various track voltages enabling you to take your locomotive (or consist of locomotives) to any layout, put it on the track, take out your smartphone and operate prototypically. Super fine speed control features more than 1000 steps with achievable scale speed accuracy up to 1/100<sup>th</sup> of one MPH. Define a speed table and much of the work like speed matching and chuff sync is done automatically for you. Users can even customize their own sounds. The system also supports auto-stop on connection loss, ensuring safety and reliability during operation. It features real time scale speed display and haptic controls like vibration for each throttle notch or pressure-sensitive emergency stop.

#### ***The Future of Consisting with LocoFi™***

With evolving technology, LocoFi™ stands at the forefront of integrating modern innovations with traditional hobbies. Its WiFi-based control system not only simplifies the setup and operation of model railroads but also opens up new possibilities for creativity and realism. With FREE app and module upgrades that is delivered “over the air”, it is now possible to keep refining the features like consisting without having to throw out your old module. The ability to easily manage consists and customize locomotive behavior makes LocoFi™ a powerful tool for hobbyists seeking to elevate their model railroading experience.

#### ***Community, Support and Resources***

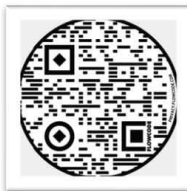


LocoFi™ website offers [resources](#) with everything customers need to get up and running with their LocoFi™ products. It includes [videos](#), a growing ‘sounds library’, help guides and cheat sheets to get started and continue the journey as advanced users.

[LocoFi™ Forums](#) offers a community of

customers and enthusiasts who are always willing to help and share their ideas, tips and tricks. All that is in

addition to the extremely responsive and helpful support team at LocoFi™. Customers have been vocal about their love for LocoFi™ by voting it as Model Railroaders Readers Choice Award two years in a row ([customer testimonial video](#)).



As the model railroading community continues to embrace digital innovation, LocoFi™ represents a significant step forward in the pursuit of realism and operational excellence. By combining the convenience of wireless control with the power and flexibility needed for larger locomotives, LocoFi™ presents new possibilities for creativity and enjoyment in the hobby. As technology continues to

evolve, systems like LocoFi™ will undoubtedly play a pivotal role in shaping the future of model railroading.

Buy direct, or learn more about LocoFi™ at: [www.wifimodelrailroad.com](http://www.wifimodelrailroad.com)

Contact: Media Desk at WiFi Model Railroad LLC or email [wifimodelrailroad@gmail.com](mailto:wifimodelrailroad@gmail.com)

## New Tracks Modeling Leadership Changes

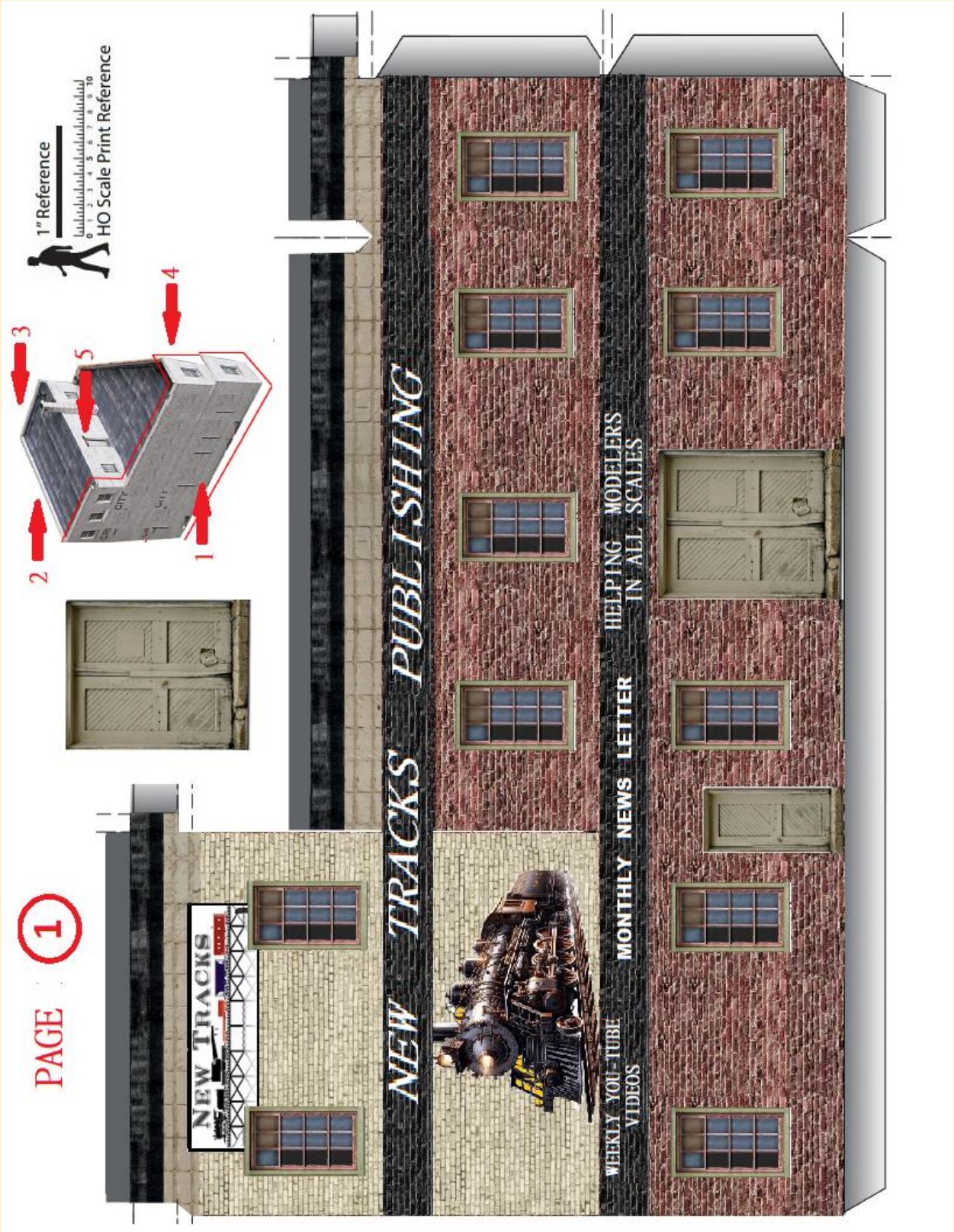
I find it hard to believe but this article starts my eight year writing New Tracks Modeling articles in this magazine. Thank you, Amy and Dan Dawdy, for giving me this opportunity. These articles combined with the weekly 6 years of the New Tracks Modeling live zoom show, the completion of the second year of the New Tracks Modeling Mentoring Scholarship program's where we awarded three \$2,000.00 scholarships to three highly deserving young model railroaders, and the almost a year of our monthly New Tracks Modeling Observations newsletter, has been quite a ride. None of this would have been possible without the many talented and dedicated volunteers who made it all possible with the contributions of their talents, time, energy, ideas, and financial support. A simple THANK YOU is so insufficient to express my heartfelt appreciation to all of you. The model railroad community has truly shown why it is such an honor for me to be a member of the family.

As many of you know I don't want any of the New Tracks Modeling programs to stop when I can no longer continue to lead the efforts. But at 85 years old I know that this time will eventually arrive and I want to start preparing for it. Many of you have worked too hard to see all our efforts just die.

In my view, New Tracks Modeling has never been about me personally. I truly believe that our programs bring great value to the hobby of Model Railroading and should continue for as long as possible. That's why I've asked Tom Farrell to lead our Zoom programs (effective January 1, 2025), Bob Davidson to expand his role and lead the Scholarship program, Phil Edholm to oversee production for all our digital efforts, and Martin Brechbiel MMR to continue to serve as Executive Editor for our Newsletter. We couldn't ask for a better group of future leaders for New Tracks Modeling. I'll continue writing articles and stay involved, though in a reduced capacity, across our other programs—and of course, I'll keep thinking up new ideas to explore. Most importantly, this shift will allow me some extra time to get back to building models.

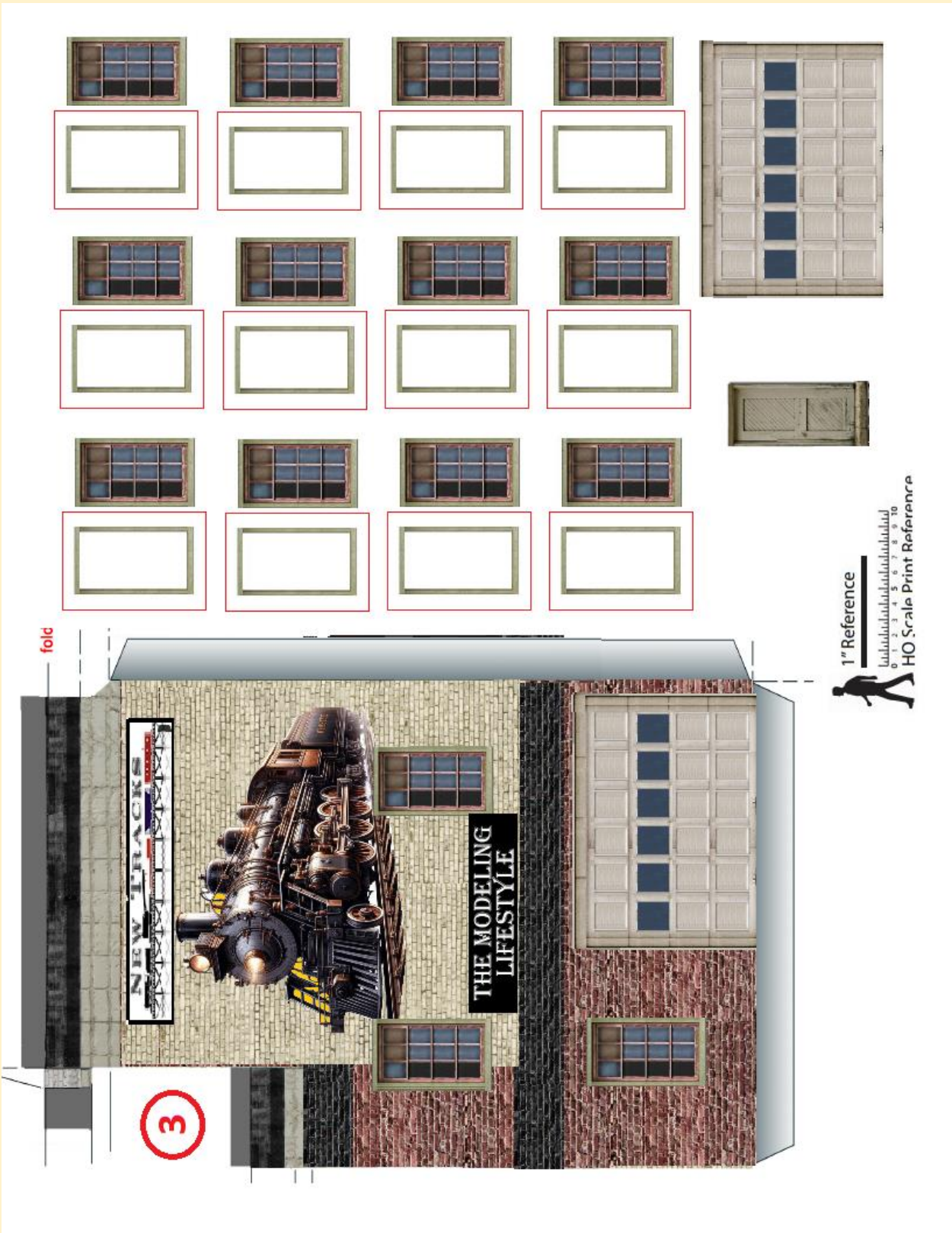
Please continue your involvement and support for New Tracks Modeling. Model building, mentoring, and youth programs such as our scholarship are in my opinion critical to the long term growth and development of our great Model Railroad Hobby. Oh, and don't forget to have a lot of fun!



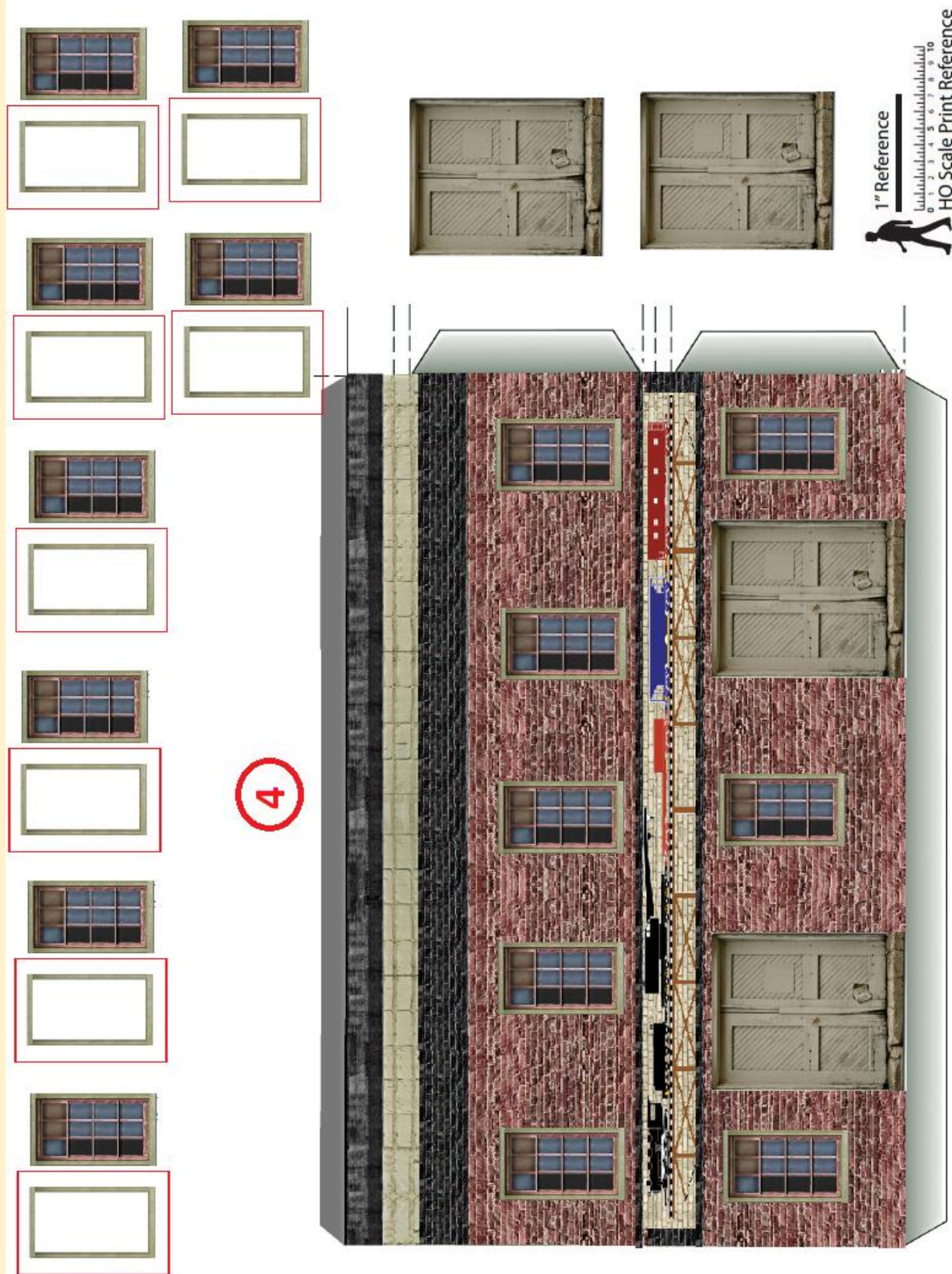




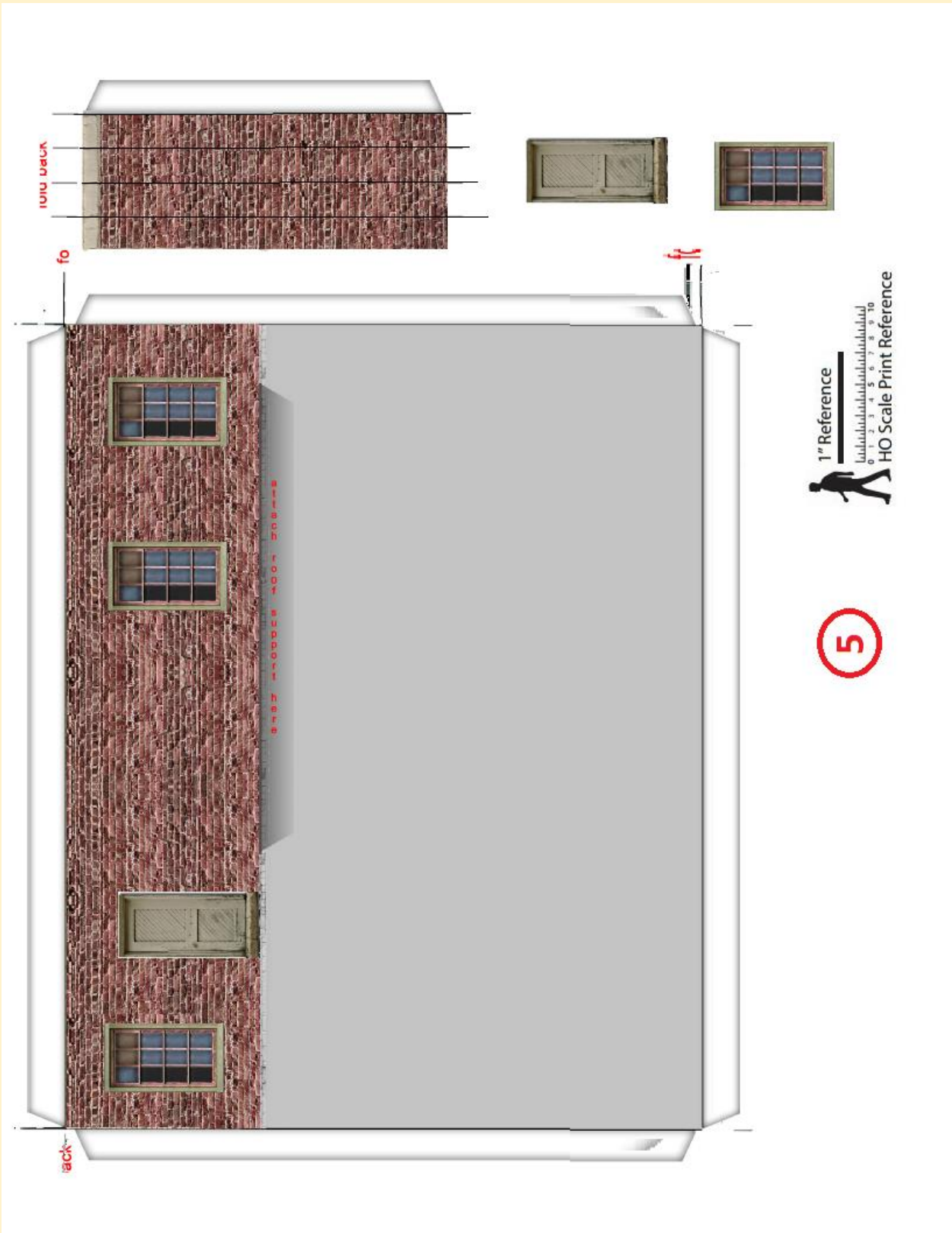


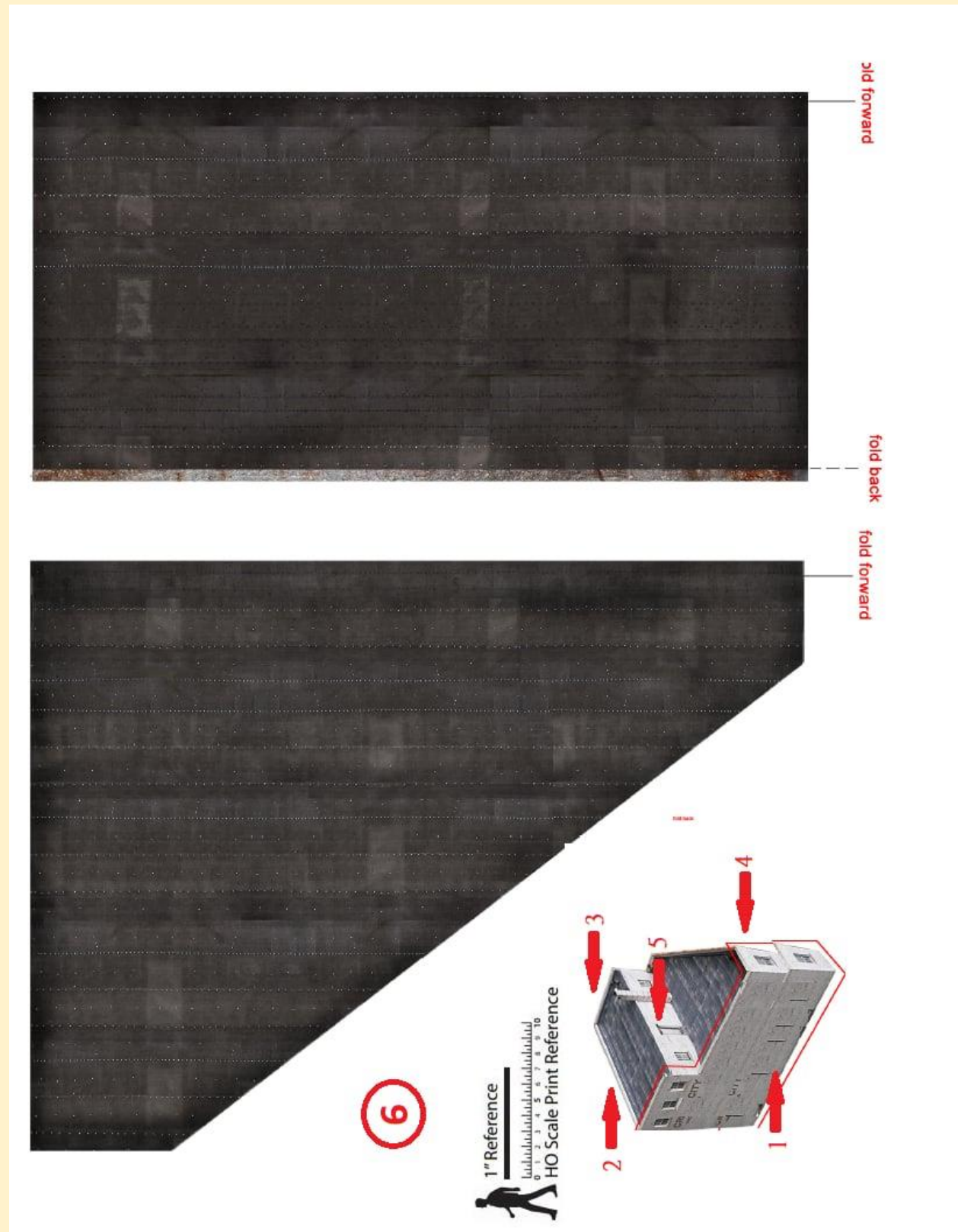












## Reaching Applicants for the NMT Scholarship – Getting the Word Out!

Every reader of this newsletter can help get applicants for our scholarships both at their local HS and college levels. Promoting scholarship availability and reaching out to college students can be done through various effective methods. Here are some suggestions:

1. **College Websites:** Contact the administration or career services departments of various colleges and universities, asking them to include your scholarship opportunity on their websites or scholarship portals. This will ensure visibility to a large number of students.
2. **Social Media:** Utilize social media platforms, such as Facebook, Twitter, Instagram, and LinkedIn, to share information about your scholarship. Create visually appealing posts and encourage students to share the information with their peers.
3. **Email Campaigns:** Obtain email lists from colleges and universities, targeting students who fit the eligibility criteria for your scholarship. Send out personalized emails offering information on the scholarship, application process, and deadlines.
4. **College Fairs and Events:** Participate in college fairs and events to directly interact with students. Set up a booth or table where you can provide brochures, answer questions, and raise awareness about your scholarship opportunity.
5. **Campus Ambassadors:** Collaborate with student organizations or campus ambassadors from different colleges to help promote your scholarship. These students can serve as brand ambassadors, spreading the word about your program among their peers.
6. **Press Releases:** Draft and distribute press releases to local and national media outlets to generate wider awareness about your scholarship program. This can attract attention from a broader audience, including potential applicants.
7. **Online Scholarship Databases:** Register your scholarship on popular scholarship search platforms, such as Fastweb, Scholarships.com, or College Board's Scholarship Search. These platforms are frequently used by students searching for financial aid opportunities.

Remember to include clear instructions on how students can apply, including any required documents and deadlines. Make the application process straightforward and easily accessible to maximize student engagement with your scholarship opportunity.





## Please Continue to Help Our Next Generation of Model Railroaders by Donating to our 2025 Scholarship Program

We are currently soliciting donations in 2024 for our next year's scholarships and are hopeful we will exceed our 2023 donation level and be able to offer even more than 3 scholarships in 2025. As a registered 501(c)(3) non-profit corporation, your donation to the scholarship is tax deductible as allowed by law. We will be accepting applications for our 2025 Scholarship awards January 1, 2025 through July 1, 2025.

We will announce by December 31, 2024 the amount and number of scholarships available in 2025. The 2025 Scholarship application will be available on our website: [newtracksmodeling.com](http://newtracksmodeling.com)

The New Tracks Mentoring, Inc., grants Scholarships to eligible HS graduates who will be, or are currently pursuing a STEAM (Science, Technology, Engineering, Arts or Math) program at a two-year or four-year college, or university or an accredited technical school. Our scholarships are paid directly to the school in the Student's name and can be used for any fee owed to the school, including room, board, or other school fees such as stuff bought at the school's bookstore.

The Officers of the non-profit Corporation are: Jim Kellow, MMR President, Bob Davidson, Vice President, Phil Edholm, Secretary, Tom Farrell, Treasurer, and Jeffery Joyner, Attorney.

The simplest way for individuals or Corporations to donate is to use Zeffy. We chose Zeffy as they insure that 100% of your contribution goes to our scholarship. There are no processing or



administration fees. To use Zeffy, please click → [here!](#)

If you wish to make a contribution by check, please make the check payable to: **New Tracks Mentoring, Inc.**, and mail it to:

**New Tracks Modeling Mentoring Scholarship  
c/o Tom Farrell  
2026 W. Stanton Ct.  
Bloomington, IN 47404**



As always, if you just want to talk or comment, or continue this discussion, please contact me at: [jimkellow@newtracksmodeling.com](mailto:jimkellow@newtracksmodeling.com)

Or, join our Facebook group: New Tracks Modeling. We have over 900 modelers on our Facebook group and hope you join us.

Thanks for reading!

Happy Modeling,  
Jim Kellow, MMR





[www.gsmts.com](http://www.gsmts.com)

PROUD SPONSOR OF *The*

**NEW TRACKS**  

---

**MODELING**

**STEAM SCHOLARSHIP  
PROGRAM**