



The Conductor's Corner by Tom Farrell

"Think Big, Build Smart: The Key to Model Railroad Success"

It's easy to get excited about building a large, highly detailed layout, but bigger isn't always better. A layout that is too large can become overwhelming, leading to frustration and unfinished projects. Many modelers find success by designing layouts in manageable sections or modules, allowing for steady progress, flexibility, and long-term enjoyment. Careful planning from the start ensures a layout remains a source of inspiration rather than an unmanageable burden.



The Pitfalls of an Oversized Layout

Many hobbyists overestimate their available time, space, and resources when designing layouts. While large, multi-level railroads can be exciting, they require extensive planning, investment, and commitment. The sheer scale often leads to burnout, unfinished sections, and maintenance headaches. Without careful planning, an ambitious dream can quickly turn into a frustrating challenge.

The Benefits of a Modular or Sectional Approach

A modular or sectional layout offers a flexible and practical way to build a railroad. By focusing on smaller sections, modelers ensure quality construction while making expansion, rearrangement, or transport easier. Modular design also allows for greater adaptability, accommodating space changes and simplifying relocation. Most importantly, it enables earlier operational enjoyment, keeping hobbyists engaged and motivated as they build.

Conclusion

A well-planned layout balances ambition with practicality. While large layouts can be overwhelming, a modular or sectional approach provides flexibility, manageability, and long-term enjoyment. By building in achievable steps, modelers can create a railroad that is both satisfying to construct and rewarding to operate.

The New Tracks Modeling show airs live every Wednesday evening at 7:00 PM ET, on YouTube and Zoom, with all episodes recorded, segmented, and available on YouTube for convenient viewing anytime.

From the Editor's Desk

Welcome to the March 2025 issue of the New Tracks Modeling Observations Newsletter.

Per our usual practice, announcements of new products from vendors and news about trains shows and conventions, and New Tracks Modeling Scholarship news, and its travel about the country are included within this issue of *Observations*. Updates, additions, and changes to our regularly scheduled program segments are included as available. Please send your articles, tips or “tricks” about any aspect of model railroading, or just share a photo or two of a model you are building directly to me at: Martin.Brechbiel@newtracksmodeling.com

Also, please contact me with your articles, comments, suggestions, details of new products you are producing in any scale, upcoming events and Train shows, or any of your views, opinions, and comments. Getting this information shared and distributed to the modeling community by all means possible benefits all!

And just a quick reminder, this is your chance to have your modeling on the cover. Just send me a good quality portrait format photo and your modeling can be on the cover of an upcoming issue of the newsletter.

As always a special thanks to our proofreaders Greg Cassidy and Joel McCurry as well as our vendor liaison, Eric Kennedy.



Cover Photo: From Stan Shields

Opinions expressed here do not necessarily reflect those of New Tracks Modeling officials and volunteers. Commercial suppliers, supplies and materials addressed in *Observations* in no way constitute endorsement by New Tracks Modeling. Copyrighted or trademarked material that appears in *Observations* is used for educational and historical benefit only and does not constitute infringement of a copyright holder.

News and Announcements

Recognizing Our New Tracks Mentors (NTM)

For some time now, I've wanted to create a special recognition award for New Tracks Mentors (NTM)—and I believe the time has come to proudly announce it. This award is dedicated to modelers who showcase their craftsmanship and contribute to the model railroading community by mentoring others.

To qualify for the NTM Award, an individual must meet the following criteria:

- 1) Share Their Knowledge – Either by giving a model-building presentation on our New Tracks Modeling Zoom show or being profiled in my New Tracks articles, in O scale Resource or the previously published S scale Resource magazines.
- 2) Be a Mentor – Willingly guide and help less experienced modelers in our community.

While NMRA Achievement Program participants are eligible, this award is open to anyone—regardless of other recognition. My mentor, for example, had no formal awards beyond being a highly skilled model builder and teacher, with his HO-scale layout featured in Model Railroader magazine.

This initiative is about more than just honoring talent. It's about recognizing those who believe in the importance of mentorship and fostering the future of our great model railroading hobby. We want to celebrate the model builders who:

- Have modeling abilities and skills,
- Want to share their talent and knowledge,
- Are willing to mentor others, and
- Support New Tracks' mission of keeping the art of model building alive.

We will have a New Tracks Mentor (NTM) page on our website, listing NTM

honorees and their email contact information. This will allow fellow modelers to learn more about each mentor by:

- Viewing their profiles and modeling work in my articles and/or
- Watching their New Tracks Modeling Zoom presentations.

By providing direct access to experienced modelers, we hope to encourage more model-building and mentoring within our hobby.

Additionally, we will publish a monthly listing of new NTMs in our Observations newsletter, complete with links to their Zoom show videos or O Scale Resource or S Scale Resource magazine profiles.

I would be honored if you shared my enthusiasm for this initiative. I welcome your thoughts and feedback on the NTM Award and encourage you to reach out to me at jimkellow@newtracksmodeling.com.

Together, let's build a stronger, more connected model railroading community. Jim Kellow, MMR, NTM



Organizational Sponsors for New Tracks Modeling

Thanks to our current Sponsors for their financial support to help pay for Shows, Zoom, YouTube, and other related out of pocket costs.



Brennan's Model Railroading
<https://www.brennansmodelrr.com/>
 (816)-252-4605



O Scale Central
<https://oscalecentral.com/>



National Association of S Gaugers
<https://www.nasg.org/>



National Capital Trains
<https://nationalcapitaltrains.com/>

Mainline Hobby Supply
<https://mainlinehobby.com/>



American Models
<https://americanmodels.com/>

Millhouse River Studio
<https://www.studiozphoto.com/Millhouse.html>



Individual and Company Donors for our 2025 Scholarships

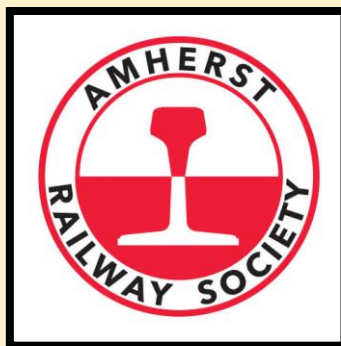
Individual donors in 2024 for our 2025 scholarships are: David Menard, Gerald and Linda Feeney, Jim Kellow, MMR, Fr. Ron Walters, Bob Charles, MMR, Jeff Zigley, Bob Davidson, Jim Foley, Anonymous, Greg Cassidy, Jamie Bothwell, Michael Gorczynski, Rich Randall, Steve Sherrill, Jeff Jordan, Pat Rivard, James Koryta, Bill Bunce, Martin Brechbiel, MMR, the Anonymous 2024 kick-off donor, Phil Edholm, Dave and Evelyn Sweeny, and Jeffrey Peck.

Thank you all so much for the leadership and financial commitment you have made to our young future modeler's education. Your help is greatly appreciated!

Company donations are greatly appreciated and will be recognized. Companies that donate \$250 in any annual scholarship cycle will be identified as Brass Donors; Silver Donors will be recognized for a \$500 contribution, Gold Donors for a \$750 contribution and Platinum Donors for a \$1,000 contribution. Donors who contribute at least \$2,000 will be listed as a specific scholarship sponsor. Please contact us at: nttms@newtracksmodeling.com to arrange for your corporate donations. Donate early to maximize your exposure. Remember, your contribution will help the young modelers who are the future of our hobby.

**We are most pleased and grateful to announce a 2025
\$1000.00 Platinum Donor:**

Platinum Corporate Sponsors



Amherst Railway Society

<https://amherstrail.org/>

We are pleased and very grateful to announce our 2025 \$500.00 Silver Donor:

Silver Corporate Sponsors



Great Scale Model Train Show

<https://www.gsmts.com/>

<https://sites.google.com/view/greatscalemodeltrainshow>

produced by Scott Geare

We are pleased and very grateful to announce our current 2025 \$250.00 Brass Donors:

Brass Corporate Sponsors



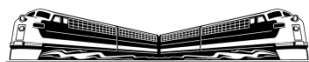
Brennan's Model Railroading

<https://www.brennansmodelrr.com/>

owned by Dennis Brennan

American Models

<https://americanmodels.com/>



3D Resin Castings In O and S Scale
Custom Resin Printing

We can print the following:
Parts ready for priming and painting
Parts ready for casting/wax molds
Parts ready for direct burnout

The Model Railroad Resource LLC

407 E. Chippewa St. Dwight, IL 60420
815-274-8809 or 815-584-1577

info@modelrailroadresource.com

The Model Railroad Resource LLC

<https://oscaleresource.com/WP/>

owned by Amy and Dan Dawdy

Kershaw Craftsman Kits

<https://kershawcraftsmankits.com/>



WiFi Model Railroad

<https://www.wifimodelrailroad.com/>

owned by WiFi Model Railroad



NEW TRACKS MODELING MENTORING SCHOLARSHIP

Help Us Reach Applicants for the NTM Scholarship!

As we've reported previously, we'll be awarding three \$2,000.00 scholarships for the 2025-2026 academic year to young modelers studying Science, Technology, Engineering, Arts or Mathematics (STEAM) on an undergraduate level. Our big challenge is to make sure that EVERY young modeler is aware of the scholarship and is encouraged to apply.

We've had presence at both the Amherst Train Show in January, and at the winter show in Timonium, and we're grateful to both of those organizations for providing us with complimentary space to publicize the scholarship. Our challenge is to do more, and you can help. As reported in last month's issue of *Observations*, here's how:

Every reader of this newsletter can help get applicants for our scholarships both at their local HS and college levels. Promoting scholarship availability and reaching out to college students can be done through various effective methods. Here are some suggestions:

1. Your local train group. There are several ways to help spread the word with your local train club or group:

- Make an announcement at your next meeting
- Include a message in your newsletter
- Mention the scholarship at your next ops session

2. Your local hobby shop. Ask the owner if they can share information about the scholarship on their web page or physically in their store. We'll provide flyers and artwork to help make this happen. Just ask (email below).

3. Local train fairs/shows. There's always an information table with news about future shows and events. Ask the organizers if you can leave scholarship flyers on the table and ask them to help publicize the scholarship in their advertising.

4. Local schools. If you have a local high school, ask if you can speak with a guidance counselor and make them aware of the scholarship. Direct them to our website. If there's a local college (2-year or 4-year) or trade school, speak to the folks in financial aid and let them know about us.



Please Help Our Next Generation of Model Railroaders

**More information can be found at:
newtracksmodeling.com/scholarship**

If you have any questions, please contact Bob Davidson
at NTMMS@newtracksmodeling.com



Our Man In Timonium

By Greg Cassidy

The Great Scale Train Show is the creation of partners Howard Zane and Ken Young over four decades ago. Typically, it has over 700 vendor tables and over 20 operation layouts in 3.5 acres. It takes place every October, February, and April (early May this year) at the Timonium fairgrounds just north



The Great Scale Model Train Show in Timonium, MD

of Baltimore MD. New Tracks Modeling had its first Scholarship table set up at the April 2023 show. Scott Geare, one of the current show organizers, has always been kind enough to donate a table in the center hall to New Tracks Modeling for their scholarship program. The organizers of the show believe in the program and how it can get younger people involved in model railroading.



Charlie Rausch, MMR visiting us at the New Tracks Scholarship table

worked at it on Sunday. Early Saturday morning, before the doors opened to the general public, we had a visitor stop by who has visited the New Tracks Zoom show in the past. This is Charlie Rausch, MMR, the Superintendent of

As usual I shared the duties of staffing the table with Steve Sherrill. We typically trade off on days because I usually have other commitments at the show with the Rockville Model Railroad Society, the club I'm involved with. For this past February show, Steve came in to work at the table on Saturday and I



Steve Sherrill's Micro layout

the Carolina Piedmont Division. For Saturday, Steve had brought one of his micro layouts that he set up on the table. These are always attention getters, especially when they see that it is operating it as dead rail and doesn't need to run on the tracks. And for Sunday, with Steve's layout gone I set up the TV that has the prerecorded program from Jim Kellow and Bob Davidson. And both of these attention getters are in order to get people to stop at our table so we can talk to them about New Tracks Modeling and especially the New Tracks Modeling Scholarship Program.



New Tracks programing on TV

One of the more frequent replies we get at train shows when we ask if someone knows of a graduating high school senior is “My children are too old and my grandchildren are too young”. But we still offer them information about the program and remind them that people of any age can donate. **(Pic 5)**



Anyone can help by handing out flyers at a train show

The Timonium show is just one of many train shows that has New Tracks Modeling present at it. If you know of a train show in your area and would be willing to set up a table or perhaps just put some flyers on a handout table, please get in touch with Bob Davidson. NTMMS@newtracksmodeling.com

NEW TRACKS MODELING

Where Mentors Help Modelers Build



LIVE WEEKLY On YouTube & Zoom

REGULARLY SCHEDULED PROGRAMS:

- Scratch Builder's Corner by Martin Brechbiel, MMR
- My Build by Chris Course (Monthly)
- The On30 Rustic Buff & Old Gothic by Tom Farrell
- Narrow Gauge Modeling by Steve Sherrill
- News & Views – All Scales by Invited Guests!

**EVERY
WEDNESDAY
7:00PM – 9:00PM
(EASTERN)**

**Subscribe on our website to receive links to the show:
www.newtracksmodeling.com**

Regularly Scheduled Segments on New Tracks Modeling

Scratchbuilder's Corner

by Martin Brechbiel, MMR (Martin.Brechbiel@newtracksmodeling.com)

Scratchbuilder's Corner presents aspects of scratchbuilding (and kitbashing) primarily with wood as the medium to build structures and rolling stock, but this includes the use of other materials such as styrene, brass, resin, and other casting materials as appropriate.

Intentions here are to teach & share techniques and "tricks" that can be adapted into your scratchbuilding projects working from simple projects through those of increasing complexity.



Scratchbuilder's Corner continued through February with the scratchbuild of Donovan's Repair & Machine Shop.

Scratchbuilding a Layout – The Eberwein Coal Facility on The On30 RB & OG

by Tom Farrell (tfarrell60@comcast.net)

New Tracks Modeler Tom Farrell is crafting a dramatic scene for his On30 Rustic Buff & Old Gothic Railroad for the "Watch Me Build" series on the New Tracks Live program. The project brings together iconic structures by legendary modelers Len Eberwein and the late Al Judy, alongside Tom's own contest-winning scratch building creations. At the heart of the scene is Len Eberwein's Museum Quality Coal Tipple.

A unique element within the project is the incorporation of a "Timesaver" DC (Analog) switching yard that meets the operational requirements of the Eberwein Coal Facility. This innovative configuration enables Tom to run his older, non-DCC locomotives separately from the DCC (Digital) system operating on the main RB&OG.



Enhancing the scene's visual interest further, the layout will feature a Thomas Yorke Single Stall Engine House—as highlighted in this issue of Observations—and a Fuel/Oil Tank, both from Frenchman River Model Works. A Bar Mills narrow gauge "Water Tower at Cranberry Yard" resin kit is also featured. Check-out this series—you won't want to miss the blend of eclectic legendary modelers on this project.

The New Tracks Modeling Live YouTube & Zoom Program airs every Wednesday evening from 7:00 PM to 9:00 PM ET, with episodes recorded, segmented, and posted on YouTube for convenient viewing later. Subscribe for free on our website to receive program links: www.newtracksmodeling.com



New Tracks Modeling “MY BUILD” 2025

by Chris Course (railrunner130@hotmail.com)

Model railroading is about sharing and the monthly MY BUILD is your opportunity to share and show off your build with the world. Trains, structures, or boats, it doesn't matter. It doesn't have to be your latest build. Heck, it could even be something you found at a yard or estate sale and just thought was neat. Or, maybe if you're stuck on something, need a different technique, or are stumped on how to proceed on a project. This is a good part of the show to ask questions. Please ask. We can help.

Every other month we have a “theme.” These are not rigid. If you can find something to share that fits in a category, regardless of being “outside the box”, that is ENCOURAGED!

The next MY BUILD will be on March 26, 2025

The Topic for this MY BUILD will be → “Free for All”

E-mail railrunner130@hotmail.com to participate preferably by March 23rd

UPCOMING MY BUILD CHALLENGES/SHOWS

April 23rd “Automation/Animation – Make it move”

May 28th FREE-FOR-ALL (ANYTHING GOES)/

Elections for future challenge themes

E-mail theme ideas to railrunner130@hotmail.com

June 21st “Water”, waterfronts, boats, bridges, etc.

Selected Photos from the 2025 February “My Build”

From Martin Brechbiel



From Greg Cassidy



From Bernd Fanghanel



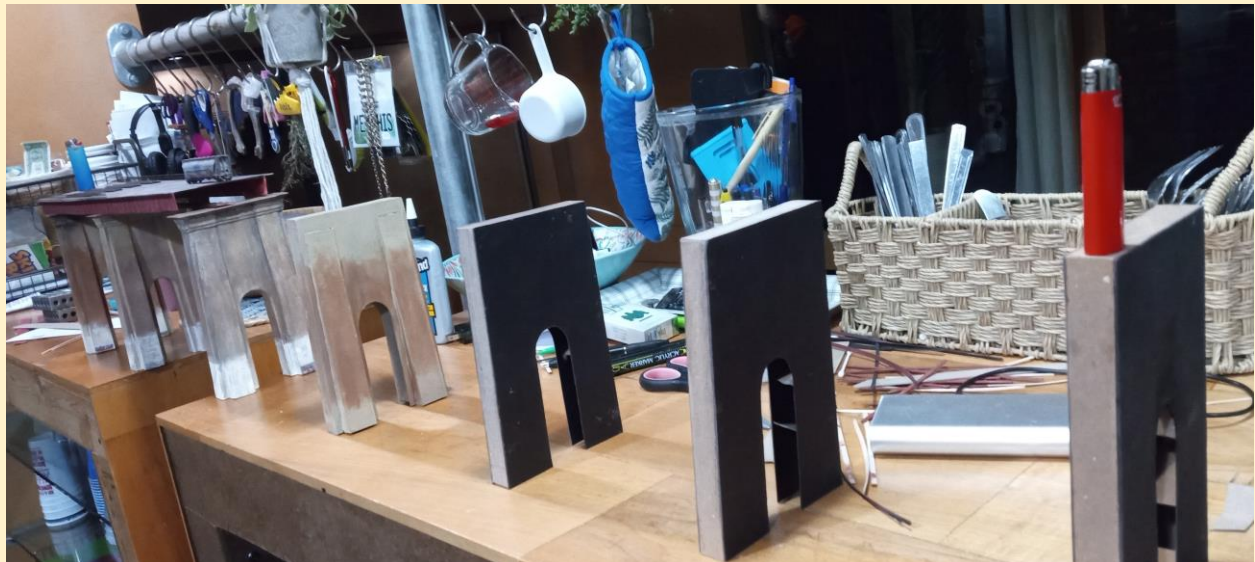
From Bob Farquhar



From Jeffrey Jordan



From Mitch "Doc" Lovelace



From Ken Myers



From Gary Shurgold



From Bill Stimson



From Fr. Ron Walters



What's to Know About the Scales We Model In?

We have had many discussions with modelers who ask, “What is O scale or N scale all about? Does anyone really model in S scale? Can I really scratchbuild a model in N scale?” Your scale of choice may be G, O or O Hi-Rail, S, HO, or N, and there are others yet that modelers choose to build in today. However, we frequently know little about the details of other scales, are possessed of misinformation, or simple mythology.

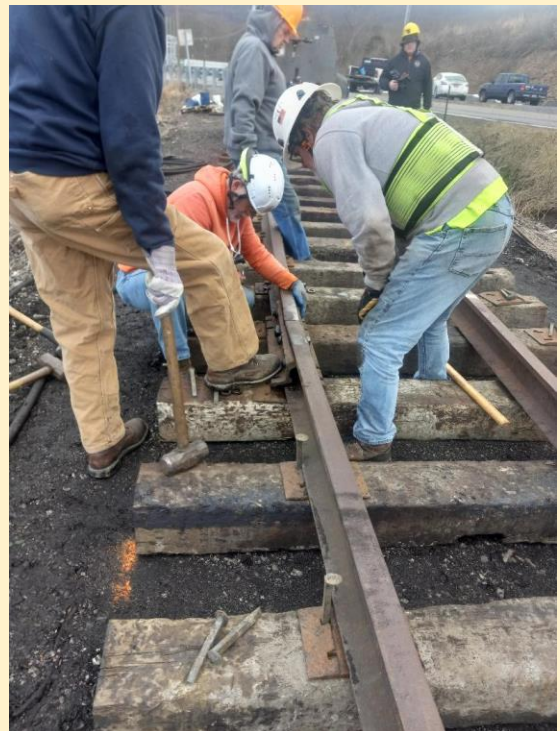
To discuss this on a regular basis, New Tracks Modeling is running monthly segments on G, O, O Hi-Rail, S, S AF/Hi-Rail, HO, and N scale hosted by knowledgeable talented modelers in each scale. These modelers will try to answer your questions, present information about what is possible to accomplish, and then present what a new modeler entering a scale might need to consider.

Volunteers Working on the Real EBT Railroad

We were finally able to get out and to build track. In spite of the blustery weather conditions (it was chilly) Al Gallo, Daniel Lane, John Widmeyer, Ron Elliott, Jerry Bertoldo, Rick Rourke, Blake Rimmey, John Quinn, and Dave Padula assisted the railroad's full-time staff. We got a lot done:

- Track is now assembled to a point 325' south of the 994 crossing, which is located a little north of the High School.
- Track is gauged and spiked to a point 175' south of 994.

Looking ahead: Henry Long has asked us to devote a weekend to dismantling the joints in the track in front of the High School between the north and the south driveways. We are tentatively planning to do this during the next FEBT Work Weekend on Saturday, March 1st.



Train Show Schedule

Great Scale Model Train and Railroad Collectors Show**May 3rd and 4th, 2025 Sat. 9am-5pm; Sun 9am-3pm**

Admission Sat & Sun \$12; Sun \$10

Maryland State Fair 2200 York Rd. Timonium, MD 21093

[Click here for complete map and directions from all](#)[points; https://www.gsmts.com/](https://www.gsmts.com/)[https://sites.google.com/view/greatscalemodeltrains](https://sites.google.com/view/greatscalemodeltrains/how)
[how](#)**O Scale 2 Rail Indianapolis Train Show****September 18-20, 2025****September 19, 2025 3pm-7pm****September 20, 9am-3pm**La Quinta Inn & Suites Indianapolis South
Near the intersection of I465 and Emerson Ave.

Indianapolis, IN

O Scale 2 Rail/P48, Narrow Gauge/On30, 3 Rail Scale

Website: <https://www.indyoscaleshows.com>

Phone: (833) 410-3872

**Send us your train show
Information!!!!**



Upcoming Railroad Prototype Modeler Events

Hindsight 20/20 is a virtual RPM, gathering on the Zoom platform. These occasional events have been held on Saturdays and feature several 30 minute presentations on prototypes and modeling. Registration is required but there is no event cost.

Hindsight 20/20 is a virtual RPM, held online and via Zoom. We hold all-day events featuring ten 30-minute clinicians on a Saturday every 6 to 8 weeks. We also hold Wednesday Night Hindsight events featuring a single clinician, every 3-5 weeks.

Registration is open at Speedwitch media (<https://speedwitchmedia.com/>).

Please register WELL IN ADVANCE

2025 events

Railroad Modeler's Retreat – March 14 & 15, Mount Olivet Lutheran Church, Plymouth, MN

RPM-East – March 21 & 22, Youngwood, PA – Westmoreland County Community College campus, minutes from the New Stanton interchange of the PA Turnpike.

Central Georgia Railroad Prototype Modelers – March 28 & 29, Lundy Chapel Church, 2081 Forest Hill Rd, Macon, GA 31210

Steel Town Railway Prototype Modellers' Meet – April 19, Eva Rothwell Community Centre, Hamilton, Ontario

RPM Carolinas: School of Railway Prototype Modeling – May 3, High Point, NC – the 2025 event is set for the May 3rd weekend.

Railway Modellers Meet – May 23 – 25, Vancouver, BC. Check their website for updated details.

New England/Northeast RPM – May 30 – June 1, Springfield Sheraton, Springfield, MA. In association with the Amherst Railway Society.

BAPM 2025 – The San Francisco Bay Area Prototype Modelers Meet – Saturday June 21, St. David's School Hall, Richmond, CA

Central Pennsylvania Shortline RPM – July 18-20, Bricktown Museum, Mount Union, PA

St. Louis RPM – July 24 – 26, Gateway Convention Center, Collinsville, IL

Waterloo Railway Exposition – August 30 & 31, Hampton Inn & Suites by Hilton Waterloo, Ontario

Mid-Atlantic RPM – September 11-14, Double Tree by Hilton at BWI

Anthracite Railroad Modelers Meet – September 19 – 21, Reading Railroad Heritage Museum, Hamburg, PA.

Colorado Rail Proto Meet – September 27 & 28, Island Grove Event Center, Greeley, CO

Bridgetown Railroad Prototype Modelers Meet – October 4, Holiday Inn Portland – Airport, Portland, OR

Central Ohio RPM – October 9 – 11, Marion Union Station, Marion, OH

RPM Naperville – October 17 – 18, Northern Illinois University conference center, Naperville, IL

Northern Alberta Railway Modellers Meet 2024 – October 25, Location TBA, Edmonton, AB

20,000 sq ft Ballroom: 350+ Tables

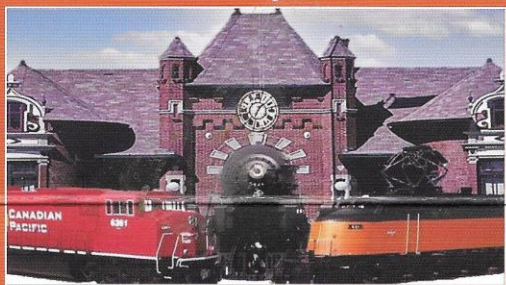
MARCH-O-SCALE-MEET

March 20 - 23, 2025



BUY SELL TRADE!

Clinics, Discussion Groups,
Contest & Layout Tours



For more information, go to:

www.marchmeet.net

Westin Lombard Yorktown Center

70 Yorktown Center
Lombard IL, 60148

Call 1-888-627-9031

Ask for March-O-Scale Meet
Rate \$128/night*

*Wednesday thru Sunday Night

THURSDAY

Fox Valley O Scalers
Operating Session: 12 pm - 5 pm
Layout Tours

FRIDAY

Dealer Setup: 1 pm - 9 pm
Layout Tours
Evening Discussion Meetings

SATURDAY

Dealer Setup: 8 am - 9 am
★ Show: 9 am - 5 pm ★
Model Contest, Clinics
Layout Tours

SUNDAY

★ Show: 8:30 am - 2 pm ★
Layout Tours



PLEASE PRINT LEGIBLY

DETACH AND RETURN THE LOWER SECTION OF THIS FORM WITH YOUR PAYMENT

Name: _____
(Exactly as you would like badge printed)

Business: _____
(Exactly as you would like badge printed-table holders only please)

MAILING ADDRESS

CITY/STATE/ZIP

Phone: (____) _____

Email: _____

Make checks payable to: Pioneer Limited LLC
Mail registration form to: P.O. Box 643
Greendale, WI 53129
Email: Chicagomeet@yahoo.com

Registration (1 or 2 days) \$30.00 \$ **30.00**
(Table holders also need to pay the \$30.00 registration fee)

of 6 ft. tables ____ @ \$60 ea/ \$70 after 3/1/2025 = \$ _____

Number of add'l. registrants ____ @ \$30. each = \$ _____
(Please list below—use back if necessary; children 15 and under free)

Name: _____

Name: _____

Electrical outlet needed for table(s) \$45.00 \$ _____

TOTAL AMOUNT ENCLOSED \$ _____
(No refunds after 3/1/25)

Spouse's Name (no charge — Only needed if attending the show) _____

**No trading Friday Night.
Access to hall for setup purposes only.



Questions? Visit **MARCHMEET.NET**, call 414-629-0030 or Facebook: <https://www.facebook.com/MarchOScaleMeet/>

The parties whose names appear above, have agreed to hold harmless all of the organizers, the sponsors, Pioneer Limited LLC, the Westin Lombard Yorktown Center, and others, singly and collectively, for any injury, harm, loss, damage, misadventure, or inconvenience suffered or sustained as a result of participating in this March O Scale Meet 2025, or in connection with any activity related to this event, whether of negligence by agents under their employ or otherwise.

7/18/24

The 27th National Model Trolley Meet

Sponsored by the

EAST PENN TRACTION CLUB

Philadelphia, Pennsylvania, USA (www.eastpenn.org)

MAY 15, 16 & 17, 2025 □

Meet Contest Theme:

“Contemporary Light Rail Vehicles & Trolleys”
(post 1976 original construction)



- ☞ *Manufacturer and Dealer Tables*
- ☞ *Awards for Modules & Displays*
- ☞ *Operating Layouts (All Scales)*
- ☞ *Pop-up Clinics*
- ☞ *Model Contests*
- ☞ *Silent Auction*
- ☞ *Evening Presentations*

To be held at the

Allentown Fairgrounds

Agri-Plex Charles Hall

17th & Chew Streets

Allentown, PA 18104

Free Parking on Site

www.allentownfairpa.org

Registration \$23 in advance, \$25 at the door.

See the back for more information.

**Visit www.eastpenn.org for the latest meet info
or to Register Online!**

Saturday
April 12, 2025



O / Proto48 / On3 / On30



Location: Strasburg PA Fire Company,
203 W Franklin St, Strasburg, PA 17579

Time: 9 a.m.-1 p.m.

Dealers entry 7:30 a.m.

Setup Friday evening, 4:00-6:00 p.m.

Doors will be closed at 6:30 p.m., NO exceptions!

Admission: \$7

- Active military Free with ID.
- Wife and Children under 12 free

Table Cost: \$35 for first table

Additional tables \$30 each

**Amish
Style
Cooking**

Future Dates

	2025	2026	2027
April 12	April 11	TBD	
Aug. 9	Aug. 8	TBD	
Oct. 11	Oct. 10	TBD	

Sponsored by: Rich Yoder, 484-256-4068

For table registration or to pay for admission in advance, please fill in the form below, tear off along dotted line and mail with payment to:

Rich Yoder
625 Anne Dr.
Wernersville, PA 19565

Registration

Admission \$7 per person x _____ = _____

Table cost (does not include admission) ... \$35 first table x _____ = _____

\$30 per additional table x _____ = _____

Total _____

Please make check
payable to:
Rich Yoder

Name(s) _____

Address _____

City _____ State _____ ZIP _____

Phone number () _____ email _____

2025 HARRISBURG Narrow O Summer Meet

On3 – On30 – On2 - On18

A two day event focused on anything and everything O scale narrow gauge.

Friday June 13 (11:00 to 6:00)
and **Saturday June 14** (9:00 to 3:00)

LOCATION: New Hope Church
584 Colonial Club Drive
Harrisburg, Pa. 17112

Guest admission: \$20 for both days – *Spouses and children under 12 free.*
Clinics and Maker Spaces demos on going throughout the event.

"The best train show food in North America"

Due to church rules and insurance restrictions: NO alcohol will be allowed

Vendors: For table information, availability, admission and fees
please email us at millcreekrr@yahoo.com for detailed information.

For updated information on the event, including the vendor list, Clinic topics, Maker Space presenters
and layouts along with any additional information or updates can be found on the Meet's
Facebookpage under the title "Harrisburg Narrow O Summer Meet".

Most attendees have used either the **Quality Inn Harrisburg-Hershey Area**,
200 N Mountain Rd, Harrisburg, PA 17112 (717) 540-9339 or **The Ramada Inn**,
300 N. Mountain Road, Harrisburg, Pa. 17112 (717)-461-9602 in the past and
found it to be a clean, friendly and a good value. Best of all they are located
only .9 of a mile or about 3 minutes from the New Hope Church venue.

The largest all O scale Narrow Gauge event in North America

NMRA 90th ANNIVERSARY CELEBRATION EVENT
NMRA MIDWEST REGION EVENT

Labor Day Monday, September 1, 2025 11 A.M. To 2 P.M.



We, the Midwest Region, with the support of the Central Indiana Division, are hosting a 90th NMRA Anniversary celebration event in Carmel, Indiana on Labor Day, Monday, September 1st, 2025.

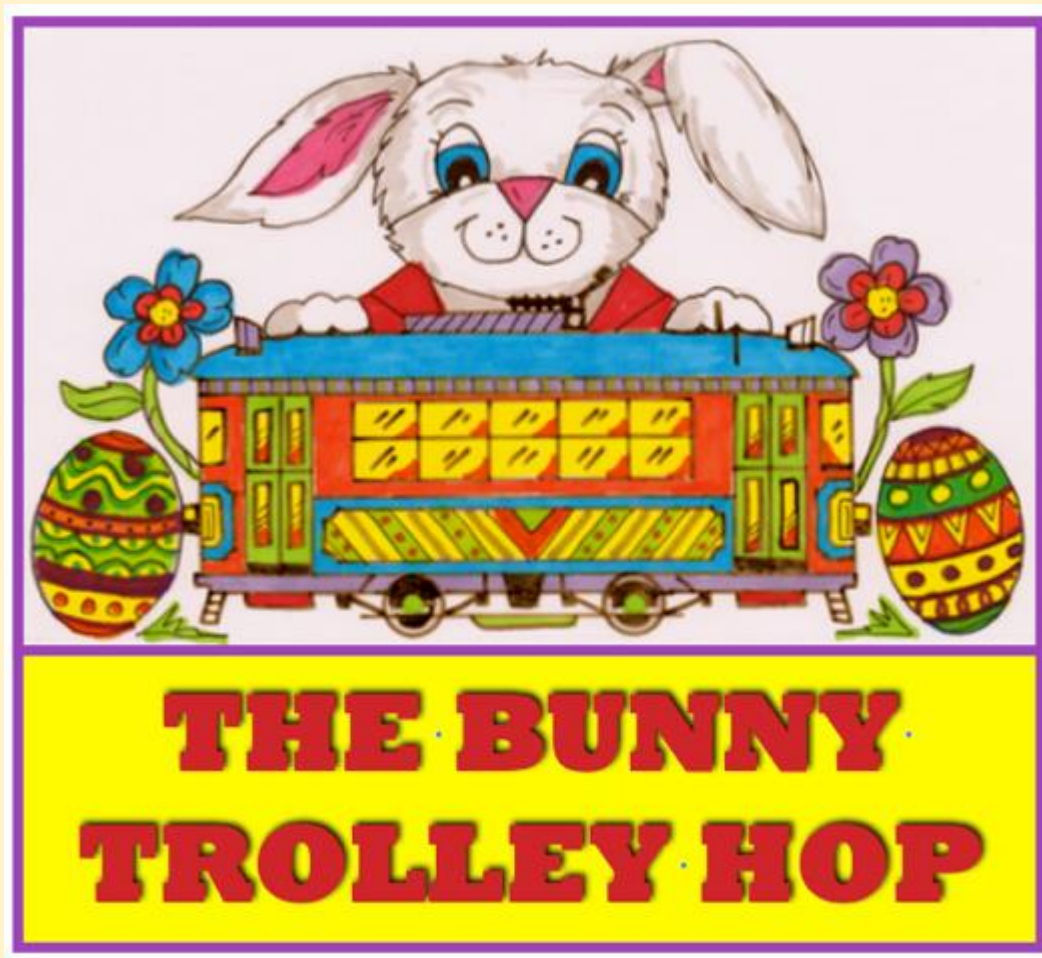
This event shall take place at the MCL Restaurant, located at 1390 Keystone Way in Carmel, Indiana, on Labor Day 2025 beginning at 11 A.M. September 1 is the actual anniversary day.

Fred Soward, Central District Director and National AP Chairman, Ray Pershing shall be our keynote speakers.

After the conclusion of remarks and lunch, you are all invited to visit a magnificent masterpiece of a world-class model railroad! It is "Rail Xpress (RxRR)" owned by Master Model Railroader #700, Dan Hinel. (address available at event—15 minute drive)

Don't miss this one chance, one-time only event!

Bunny Trolley Hop 2025



Join us April 12th, 13th, and 19th at the Illinois Railway Museum in Union, IL.

The Illinois Railway Museum is pleased to announce that we will be holding the Bunny Trolley Hop again in 2025.

This event will run on three days: Saturday, April 12th, Sunday, April 13th, and Saturday, April 19th. **Gates open at 9:15 AM and close at 5:00 PM.**

As always, young visitors will be able to meet and be photographed with the Easter Bunny in his carrot coach and there will be lots of other attractions to enjoy. This year, Bunny and the other attractions will all be located on the

museum campus, with a frequent service of streetcars providing rides between the carrot coach and the following attractions:

- See live animals at the small animal zoo.
- Join the Easter egg hunt. Hopefully, the weather this year will allow the hunt to be outside, but we will move into one of our historic display buildings in case of inclement weather.
- Whilst riding the streetcar, help the Bunny to find his missing treasure.
- Enjoy games as well as our regular playground activities.
- Coloring activities will be available in our diner annex.
- Don't miss our large model railroad displays (under the Hobby Shop sign).

For those who would like a longer ride, electric main line trains will operate from the depot. The display barns, housing IRM's large collection of historical railroad equipment will also be open to enjoy at your leisure.

Tickets are available for purchase on the Museum website at \$20 each and are required for those aged two and over. On these days the Museum is open only for holders of event tickets. Everyone, including museum members, will need a ticket for admission to the event.

To minimize wait time and congestion in the carrot coach, a limited number of tickets will be available for each 30-minute time slot between 10:00 a.m. and 3:30 p.m. **The time on your ticket is the time when you should visit the Bunny in his carrot coach at the depot. You should plan to arrive at least 30 minutes before this to allow time to get to the depot.**

The time on your ticket does not restrict when you may enter the museum.

BUILD-ALONG

New Tracks Modeling Live!



This New Tracks Modeling Program
is Scheduled for March 19 & 26, 2025
7:00 PM-9:00 PM (Eastern)

- Exclusive to New Tracks -
Receive a 20% discount on this kit
Use Code: NEWTRX

Sponsored by

Frenchman River Model Works

New Tracks Modeler (NTM) Tom Farrell is back at his workbench, bringing another Thomas Yorke masterpiece to life for a New Tracks Live "Build-Along" segment! This time, he's constructing the O/On30 1:48 Scale Single Stall Engine House from Frenchman River Model Works, a beautifully crafted resin kit designed by the legendary Thomas Yorke. With his expert craftsmanship, creative weathering techniques, and keen eye for detail, Tom transforms this kit into a standout showpiece. Along the way, he shares valuable tips and insights to inspire and guide modelers of all skill levels.

Don't miss this exciting build - Subscribe for free on www.newtracksmodeling.com



Frenchman River
Model Works

www.FrenchmanRiver.com

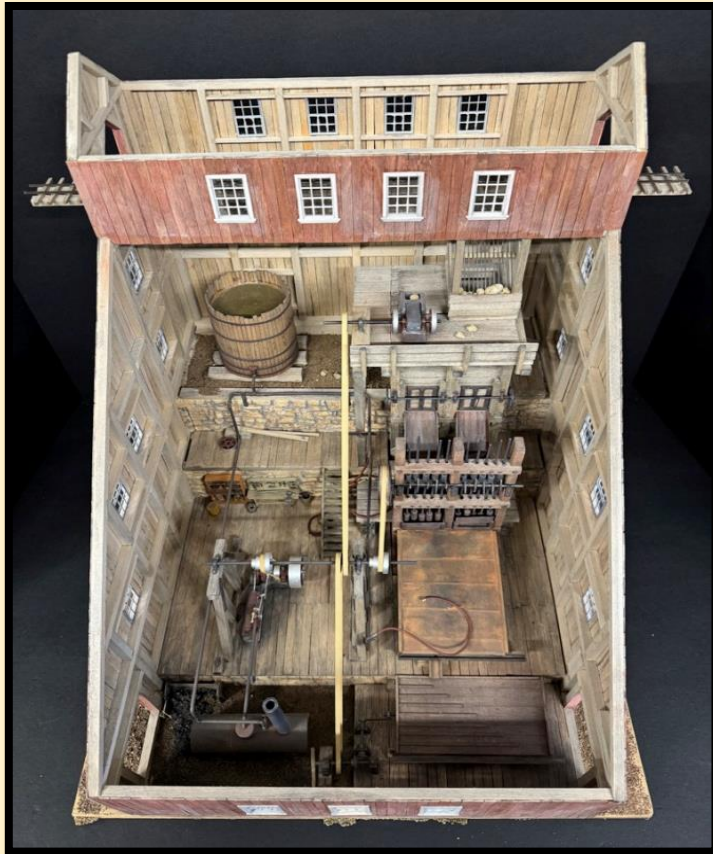
“Watch Me Build” New Track Live Modeling Sessions with Tom Farrell

New Tracks Live “Watch Me Build” Featuring Tom Farrell

Join us for the "Watch Me Build" sessions on New Tracks Modeling Live, where Master Modeler Tom Farrell takes us through the step-by-step process of constructing the Eberwein Coal Complex in this exciting new multi-part series, beginning March 5, 2025.

The Eberwein Coal Complex

On January 18, 2018, Len Eberwein completed his mine and tippie masterpiece—a stunning project that took over four months to build, meticulously modeled after a German prototype. Nearly six years later, in October 2024, Tom received an unexpected call from Len. He was downsizing his home and

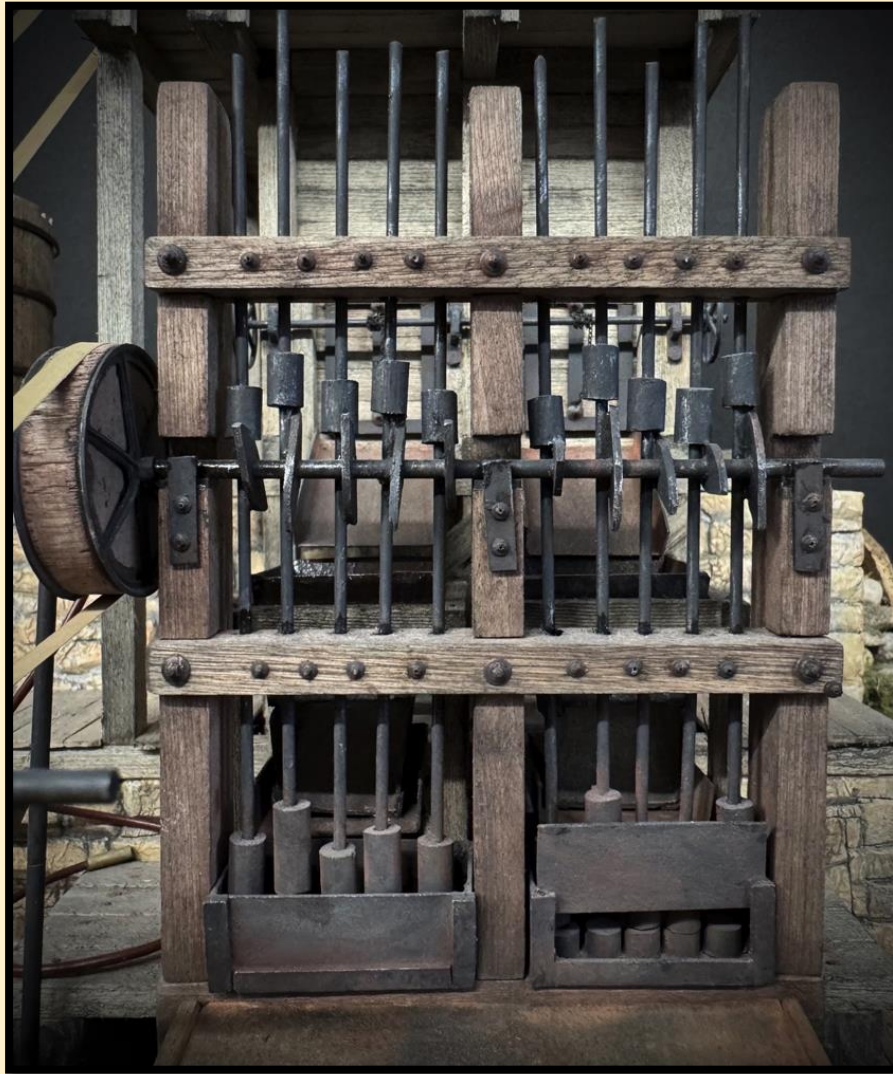


dismantling his layout, offering Tom his contest-winning, world-class structures, including this one, for integration into the Rustic Buff & Old Gothic Railroad.

He didn't hesitate. The next day, Tom hit the road—an eleven-hour drive each way!

A Layout Expansion with a Twist

This is no small structure—it measures 18 inches long, 14 inches wide, and 24 inches high, so finding the perfect spot requires careful consideration. That's when inspiration struck him: why not build a shelf layout within his RB & OG?



But here's the twist—the shelf layout will operate as an analog system to accommodate his extensive collection of DC-powered On30 locomotives. While DCC operation might be an option, Tom hasn't made a final decision yet. Since this shelf layout won't connect to the main railroad, DCC compatibility isn't a necessity.

Current Progress & Timeline

Right now, Tom's focused on building the tunnel beneath the mine and tipple, where the RB&OG mainline runs below it all. This is a critical piece of the project, and he expects to have the entire build, along with the integrated running shelf layout, completed in about four weeks.

The Eberwein Mine Complex build is scheduled to begin on March 5, 2025.

So stay tuned, and don't miss an episode—we've got some serious modeling ahead!

The New Tracks Modeling show airs live every Wednesday evening at 7:00 PM ET, on YouTube and Zoom, with all episodes recorded, segmented, and available on YouTube for convenient viewing anytime.

What Does Mentoring Give to You?

By now, I hope everyone knows that New Tracks Modeling is built on volunteers who mentor fellow modelers, helping them improve their skills and build more models.

You might understand what a modeler gains from being mentored—but what about the mentor? What's in it for you? Can you sum it up in just a sentence or two?

I recently came across an insightful article on Global English Editing by Farley Ledgerwood that answers this very question. He writes:

“Volunteering keeps you active and connected.”

“Giving your time to help others doesn't just make a difference in their lives—it changes yours too. ... volunteering keeps you on your feet and engaged with the world around you. It gives you purpose, routine, and a reason to stay active.

But more than that, it reminds you that you're needed. That your time, skills, and kindness still have an impact. And sometimes, knowing that can be just as important as staying physically strong.”

That's what you get from mentoring. The reward of seeing someone you've helped proudly say, “I built that! Thank you for your help.” Their gratitude can be worth its weight in gold.

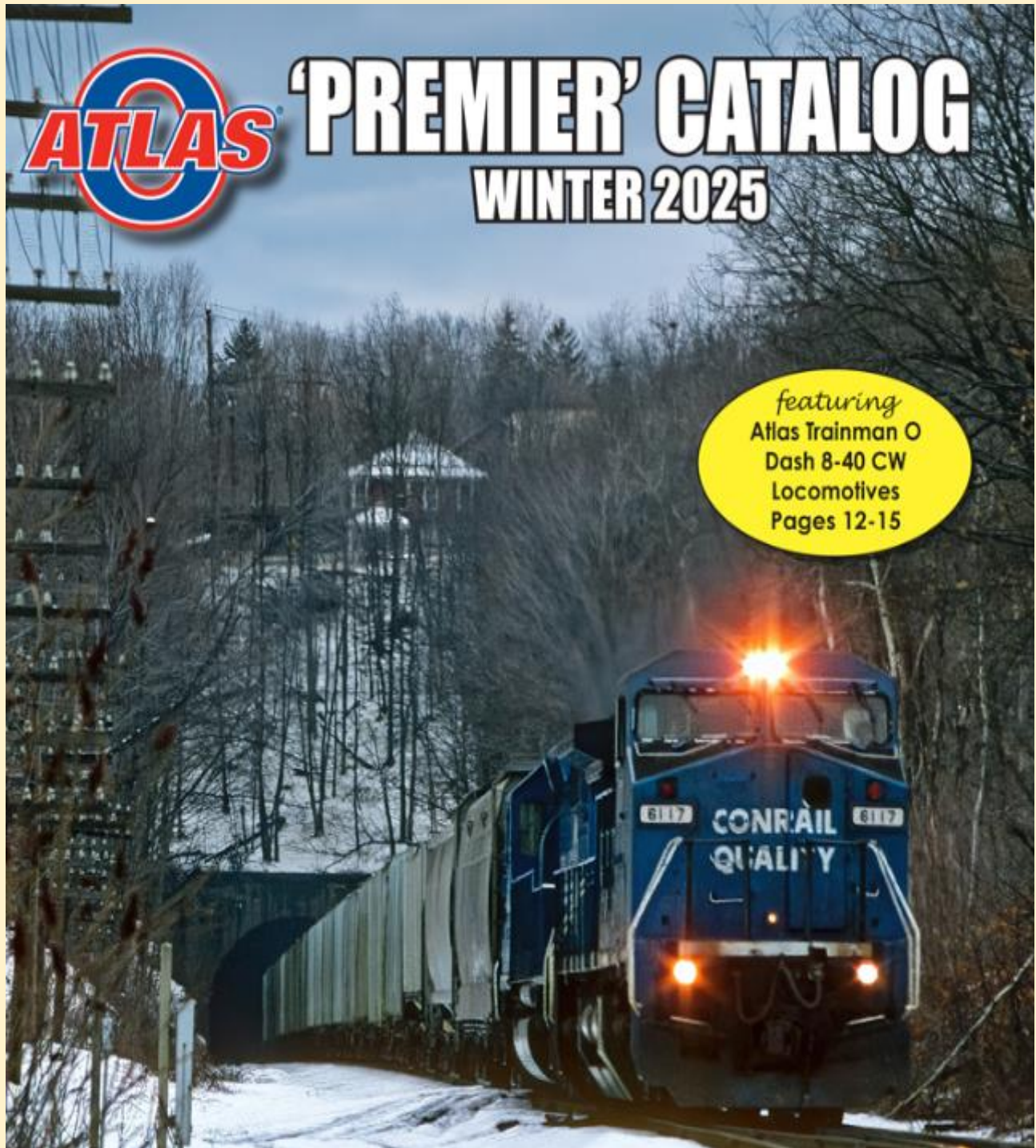
Mentoring is a win-win—for both the mentor and the modeler receiving guidance. If you've had a mentoring experience—whether as a mentor or a mentee—I'd love to hear your story! I'm working on an article about "Mentoring Experiences" and would love to include your insights.

Please share your thoughts with me at jimkellow@newtracksmodeling.com. Thanks in advance for your help!

Best regards,

Jim Kellow

Vendor's Corner



Diorama Hobbies



15 Wood Crates [Small] - HO, S and O Scale

Jersey Barriers / K-Rail Barriers (10 pack)
HO Scale 1:87



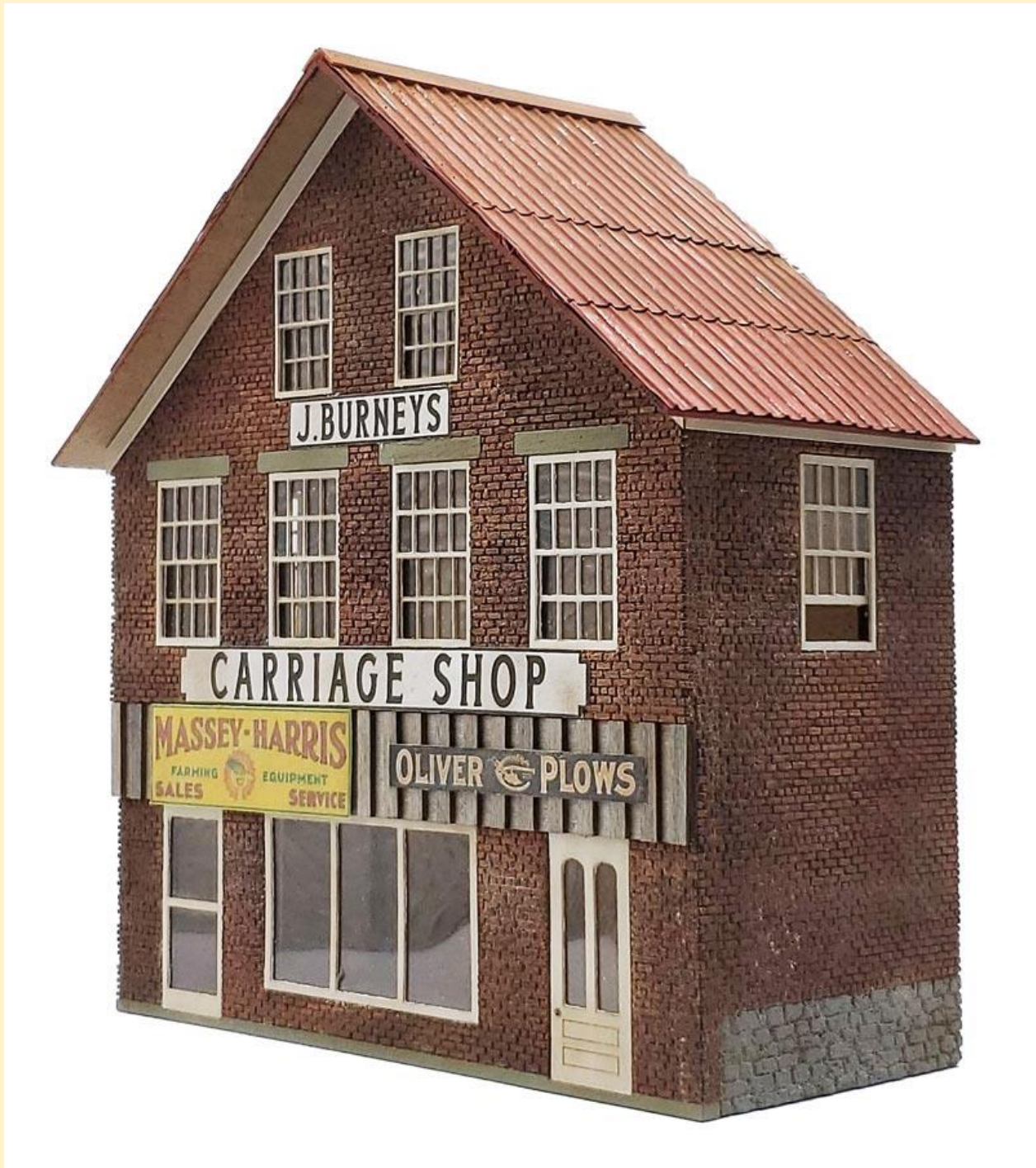
Manhole Covers (15 pack) HO, S and O
Scales

HVAC Kit 6 - Air Ducts & Air Conditioner
HO Scale 1:87



MONSTER modelworks

Carriage Shop Background Flat Kit



John Burney's Carriage Shop, Built approx. 1845 by Henry Jackson. Used as Burney's Carriage Shop 1880-91 in Dublin, Indiana.

Keep it as a Carriage Shop or modernize it with more modern store fronts in your town.

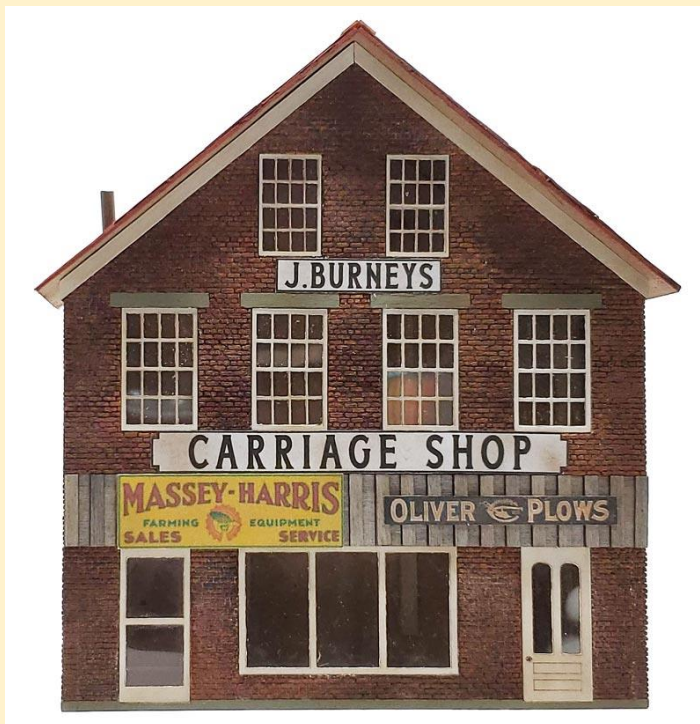
Dimensions:

HO Scale: 4.625"W x 2.125"L x 5.375"H

S Scale: 5.75"W x 2.7"L x 7.75"H

[HO Scale Shop now](#)

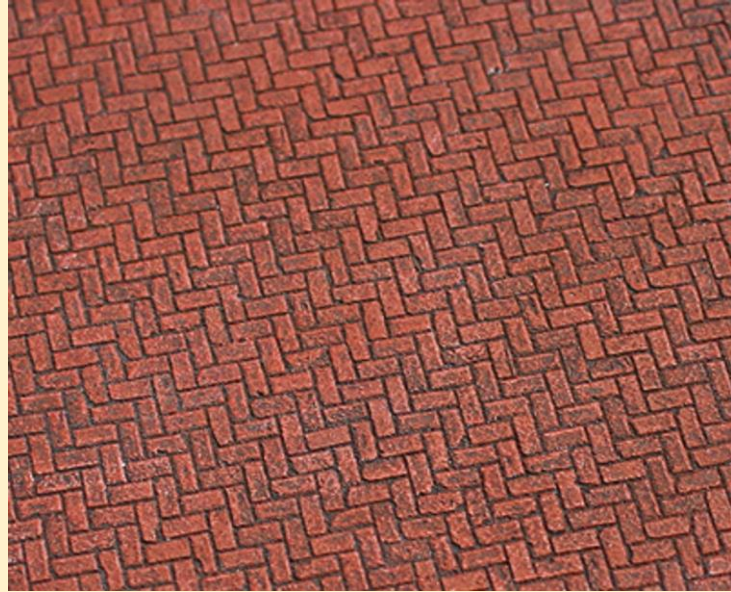
[S Scale Shop now](#)



STARTS SHIPPING February 21st 2025



[Shop now](#)



[Shop now](#)



Rusty Rail

New HO scale releases



RRS-H-31 - This is a small side shop with full interior that will butt up to an existing building. As you can see in the pictures it makes a great addition to take a building to the next level in detail. You get a workbench and several extra castings to make the building come to life. Minor assembly of the three walls is required. The castings come unpainted. The shop measures 2 1/2" long by 1 1/2" wide by 1 3/8" tall.

[Click here to check it out](#)



RRTK-H-34- Here you have a 1933 Ford Sedan. Ford Made a lot of these cars. This Ford had a V front bumper and a great front grille. Minor assembly required attaching the tires to the frame. Sedan measures 2 1/4" long 7/8" wide and 5/8" tall. Casting comes unpainted.

[Click here to check it out](#)

New O scale releases

RRWT-O-03 - Here is the next work car that is a tool car in ON30 scale. You see the small tank in the back and the tool house. Also has a small fence that holds a dented 55 gallon drum and a smaller steel drum. The tank contains a 3D printed valve. The flat car is included and has boosters to allow clearance on those tight turns. I will provide wire for the braking wheel and wire for the grab irons. I will include the San Juan detail parts (former Grandt line) 2 stirrups and a brake wheel setup. 2 Kadee coupler boxes are included but you supply the Kadee couplers and the trucks you want. The tool car is 4" long and 1 1/2" wide. All resin castings and comes unpainted.

[Click here to check it out](#)



RRSP-O-30 - Here is great little fuel tank that works great in a shop scene or logging scene. Would even go good on the back of a truck. Small footprint and easy price. Comes with a 3D printed valve. The tank measures 1" by 1/2" by 1". The casting comes unpainted.



The Handcar Shed in HO Scale by Conowingo Models. We believe that this kit is of a fictional structure as we have not seen photos of anything like it. It is based on a kit originally produced by Inland Scale Models. However, we have laser-cut this kit so that it's easy to build, changed a few things around and added a few more details, including a piece of Atlas track and two hand cars.

[ORDER YOURS TODAY](#)

Instruction Updates and Tips

Many people do not realize that we are constantly updating our instructions to improve processes and make things easier to understand. The Amherst Flatcar kit is a good example of this. If you have purchased a rolling stock kit, we recommend going to the website and downloading fresh instructions before building. The Amherst Flatcar kit contains the latest building instructions for all rolling stock kit bases. There is also a General Instructions Help file, which many people would benefit from.



[INSTRUCTIONS](#)

From Ted DiMone

This model is 1/48 scale, Laser printed walls and tower. There is no other like it. It was printed by a gentleman that remains to be anonymous at this time. It is completely scratchbuilt with real clocks in each side of the tower and Evans Designs lighting. Trees are from Grand Central Gems. All figures are 1/48.5 British O scale, hand painted by me using Vallejo and Ammo paint, and manufactured by Model-U in Great Britain. Real concrete product is the sidewalk. The sign is from Miller Engineering.



Daylight Limited **PACIFIC COAST REGION CONVENTION**

**MARCH
27-30
2025**



SAN LUIS OBISPO, CALIF.

- Popular daily schedule with clinics in the am & pm
- Virtual Meet up & Check In on Wednesday
- 3 full days of clinics - Thursday, Friday, and Saturday
- Awards & Contest winners - Sunday am
- 10+ hours of content/day for virtual event
- Layout tours & operating sessions
- Excursions
- Modular Layout Tour
- Contest Room Tour
- Virtual Excursions

Use promo
code
PCR2025
for \$10 off!



Pacific Coast Region
National Model Railroad Association



www.pcr2025.org

MODEL RAILROAD RESOURCE LLC 3D DIVISION

O Scale Freight Car Parts, Locomotive Parts, Relay & Signal
Cabinets, Track Accessories and More
<https://modelrailroadresource.com/WP/>



Grab Iron Ends (Nut/Bolt) \$3.95

The stem is .020 and designed for .015 wire. There are 17 parts per sprue and four sprues per package.



Grab Iron Ends (Rivet) \$3.95

The stem is .020 and designed for .015 wire. There are 17 parts per sprue and four sprues per package.

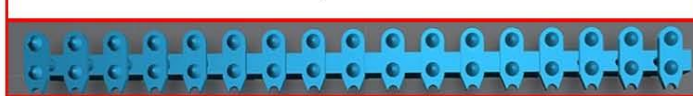


Grab Iron Ends Square Nut \$3.95

The stem is .020 and designed for .015 wire. There are 17 parts per sprue and four sprues per package.



Grab Iron Double Nut/Bolt for Caboose \$3.95



Grab Iron Double Rivet for Caboose \$3.95

The stem is .020 and designed for .015 wire. There are 17 parts per sprue and four sprues per package.



250 Gallon Propane Tank \$5.95

Not only for modern day homes and business, this will also go nicely with track heaters that are used outside of yards and on the main.



Harrison Mayes Roadside Sign \$3.95

Middlesboro, Kentucky's Harrison Mayes was a coal miner, folk artist, and evangelist. He started dotting the Appalachian landscape with handmade concrete crosses and signs in 1918 at the age of 20 until his death in 1986. As you can see by the photos, on one side the sign reads "PREPARE TO MEET GOD." On the other, it reads, "JESUS IS COMING SOON." Since I model part of that area in 1947 I thought this would be something unique and a bit of real history.

Air Hose w/ Angle Cock & Glad Hand \$3.95

12 pieces per package or enough for 6 cars / locomotives.



See all our O scale and S scale products at:
<https://modelrailroadresource.com/WP/>

Custom Printing

From Your Files

Model Railroad Resource 3D Division

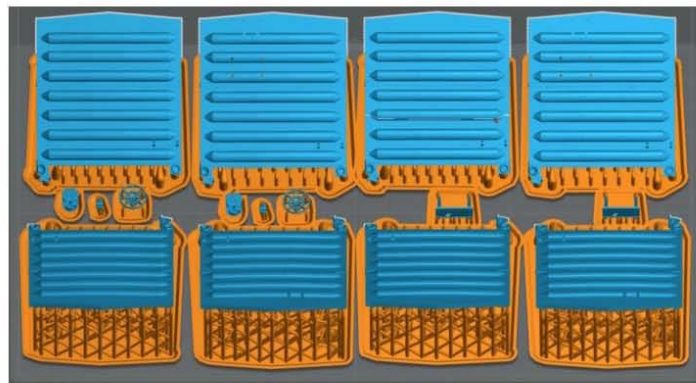
mrr-3d.com

We can print the following:

- Parts ready for priming and painting
- Parts ready for casting/wax molds
- Parts ready for direct burnout
- Build Volume of $218.88 \times 123.12 \times 250$ mm
- Many Resin Choices*:
 - Machinable Black / Grey
 - Castable for Burnout (Blue)
 - Standard Grey
 - Clear and more

From your files \$25.00† per
platen $218.88 \times 123.12 \times 250$
mm (8.6 x 4.8 x 9.8 in)
Plus one time support charge
per file \$45/Hour.

We guarantee the finished
product using our supports**.



†Blue casting is \$35.00 *Many custom resins available for your project. **We may start the weeding process on delicate models before curing.

Model Railroad Resource 3D Division

Email: daniel@mrr-3d.com

Master Model Railroader

By Jack Dziadul, MMR

New Tracks Modeling founder Jim Kellow, MMR is an enthusiastic promoter of the Achievement Program (AP) of the National Model Railroad Association (NMRA), as are many other regular contributors to New Tracks. Readers who are unfamiliar with the NMRA or its AP might want to scroll through the website: nmra.org. Completing seven AP certificates out of eleven subject offerings across four broad categories leads to the Master Model Railroader (MMR) designation.

I had not gotten serious about my modeling until I moved to North Carolina in 2005 and transferred my little used NMRA membership to the Mid-Eastern Region. The Carolina Piedmont Division has monthly meetings with informative clinics. I became a regular attendee and started to learn quite a bit about the many aspects of the hobby, making many new friends in the process.

I was not long into my tenure with the division when the newsletter editor announced a move out of state. I had always enjoyed reading and writing, so I volunteered to fill that upcoming vacancy. It did not take long to check the box for my first AP certificate: Model Railroad Author in 2010.

2005 was the first year that CPD hosted a regional convention. That was my first taste of seeing what conventions were all about; especially seeing the astonishing models in the contest room. Becoming a Master Model Railroader was out of reach for me, but I was incrementally adding to my knowledge and improving my modeling skills. MMR was not at all on my radar.

In 2006, Philadelphia hosted the NMRA convention. Having a national convention within our region was not a common occurrence, so I signed on and joined several CPD friends for the Amtrak trip up north. Once there I responded to a call for volunteers to assist with packing bags and manning a registration help desk. One of the first clinics that I attended concluded with an invitation to become an “apprentice” contest judge. That was probably the best decision I have made within my MMR journey. All of that national level volunteer work on top of other division level volunteer work and bingo! AP certificate #2: Association Volunteer 2011.

After touring many well-done layouts, I signed on as a regular operator on an HO scale layout. After one year, I started operating on a large N-scale layout for two years. About this time, I signed up for operations callboards at conventions and other ops weekends. Before long...AP certificate #3: Chief Dispatcher.

Then came a long pause; too many long work days and too much travel. But a termed-out MER Director talked me into running for office. Okay, certificate #4: Association Official. Yes, four AP certificates without touching glue or paint. I actually felt a bit awkward about this. Hmmm, I had better get going on some real modeling.

During this timeframe, however, I was into producing Ipswich Hobbies craftsman structure kits as my small contribution to the economy, so I really did have some familiarization with glue and paint. 2021 was to be the year. I kicked off January with my Golden Spike Award, just to prove that I could get two locos running at the same time on more than plywood. Then, scratch-building and craftsman kits from other manufacturers brought in AP #5: Master Builder – Structures. This was quickly followed by AP #6: Master Builder – Scenery.

Then another long pause as life got in the way of hobby time. So, AP #7: Master Builder – Cars finally got me over the MMR finish line in 2024. There were many supporters and mentors along the way. But the biggest contributor to pulling me over that finish line was Martin Brechbiel's scratchbuilding series on New Tracks Modeling.

Achieving Master Model Railroader was a fourteen year journey for me, but well worth it. I never would have challenged myself without the framework of the AP program. I cannot recommend it highly enough. Now on to AP #8. Why not keep challenging myself to improve and broaden my skills? Jim Kellow has set the bar quite high for us with all eleven certificates.

Why I Changed the Title of My Articles in O Scale Resource Magazine

By Jim Kellow

Some of you may have noticed that I recently changed the title of my articles from New Tracks Modeling to simply New Tracks. I'd like to take a moment to explain why.

The New Tracks brand has been a part of my journey for years, and I've always been mindful of maintaining its original look and feel. When I stepped back from being involved in every aspect of New Tracks Modeling, I wanted to give the dedicated volunteers I had invited to lead different areas of the brand the freedom to shape their parts as they saw fit. One of these leaders felt that the logo I had originally created should be updated.

Longtime readers may recall that this series originally started under the New Tracks name, as reflected in this article. However, when I expanded to include weekly Zoom shows and was advised that a website was necessary for outreach, I had to modify the name to New Tracks Modeling, since New Tracks was unavailable as a domain. I kept the core of the logo intact but added Modeling to the title to fit our growing platform.

Now, in order to ensure that the new leadership of various New Tracks initiatives has full creative freedom, I have decided to return to the original New Tracks name and logo. This reflects my vision of New Tracks as the overarching brand that encompasses all its evolving components.

Moving forward, there may be additional New Tracks projects with slight variations in their names, but they will all remain part of the larger New Tracks brand. I hope this change makes sense to you, and as always, I welcome your thoughts.

Feel free to reach out to me at jimkellow@newtracksmodeling.com.



www.gsmts.com

PROUD SPONSOR OF *The*

NEW TRACKS

MODELING

**STEAM SCHOLARSHIP
PROGRAM**