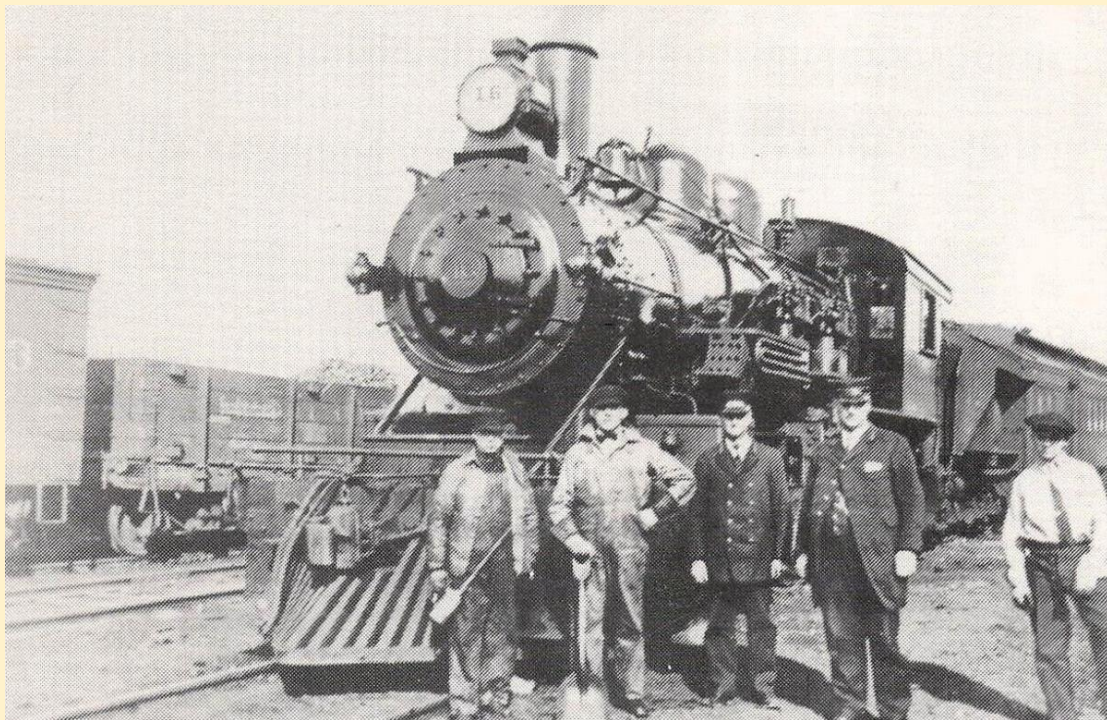




New Tracks Modeling Observations - Table of Contents

| Page | Title | Author |
|------|---|--------------|
| 2 | Table of Contents | |
| 3 | Conductor's Corner | Tom Ferrell |
| 4 | News and Announcements | Tom Ferrell |
| 7 | Scholarship | Bob Davidson |
| 10 | Regularly Scheduled Segments | |
| 11 | New Tracks Modeling "MY BUILD" | Chris Coarse |
| 14 | The Scales We Model In | |
| 14 | News from the EBTRR | |
| 17 | Railroad Prototype Modeler Events | |
| 27 | Vendor's Corner | |
| 31 | Frenchman River Fuel Depot | Tom Ferrell |
| 34 | Andora Forest Scene | Ted DiMone |
| 37 | New Tracks Modeling YouTube Channel Links | |



Cover Photo: A Conowingo Models product from Chris Coarse

Opinions expressed here do not necessarily reflect those of New Tracks Modeling officials and volunteers. Commercial suppliers, supplies and materials addressed in *Observations* in no way constitute endorsement by New Tracks Modeling. Copyrighted or trademarked material that appears in *Observations* is used for educational and historical benefit only and does not constitute infringement of a copyright holder.

The Conductor's Corner by Tom Farrell

Your Voice, Your Stories—Be Part of New Tracks Modeling!



As we conclude the Observations newsletter with the May 2025 issue and prepare to launch our exciting new publication, New Tracks Modeler magazine, this June, we want to celebrate what has always been at the core of New Tracks Modeling: you—the viewers, mentors, modelers and presenters who make this community something truly special.

You've been the lifeblood of New Tracks Live, bringing curiosity, creativity, and camaraderie every week. As we embark on this next chapter, we invite you to join us and help shape the content of the new magazine and the live show.

Everyone involved in this hobby has something to contribute. Whether you're an experienced scratch builder, a fearless kit basher, a scenery wizard, or someone just uncovering the magic of model railroading—we want to hear from you.

- Have a how-to project that others could learn from?
- Describe your layout's theme and era.
- What attracted you to modeling in your chosen scale?
- A technique or tip that's changed the way you model?

We would love to feature your work in an upcoming episode of New Tracks Live, in the pages of New Tracks Modeler, or both!

You don't need to be a published author or a professional presenter. If you've got a passion for the hobby, we'll help you share it in a fun, encouraging, and inspiring way with others.

How to Get Involved: We're pleased to discuss your idea, assist you in putting something together, or guide you through the process step by step.

Reach out to me with your ideas, questions, or even just a note saying, "I'm interested!" at my email: tfarrell60@comcast.net or call my cell: 812-276-7000.

News and Announcements

Legendary Modeler Tom Yorke Headlines Two-Part *New Tracks Live* Series

Every so often in this great hobby, someone reminds us why we are so passionate about model railroading in the first place. Someone who elevates the craft and the storytelling to a whole new level—doing it all with a twinkle in the eye, a chuckle, and glue on their fingers.

That someone is Thomas Yorke

If you caught Tom's *New Tracks Live* presentation on March 26, 2025, you already know the creative spark he brings to our hobby. In "The Virtues in Modeling in Gn15—Part 1," Tom shared his modeling philosophy while showcasing a variety of quirky, character-rich Gn15 structures—all bursting with personality and purpose. It was, without question, a master class in modeling without boundaries from someone who has been doing this for over 50 years.

Modeling Without Limits: A Look at Part 1 of "The Virtues in Modeling in Gn15"

If traditional model railroading feels like a game of rivet counting and strict prototype modeling is holding you back, Thomas Yorke says it's time to think outside the rails—Gn15 might be the creative outlet you've been waiting for. In Part 1 of his presentation, Tom guided us through one of the hobby's most whimsical and creatively liberating scales. With big characters, small footprints, and endless creative possibilities, Gn15 is where artistic freedom and model railroading come together like a cornfield meet—with sparks flying in the best possible way.

What is Gn15, Anyway?

Gn15 combines G-scale modeling—typically 1:24-scale figures and scenery—with HO or On30 gauge track to represent tiny industrial railways. These compact lines once hauled everything from ore and timber to even sugar cane, which is the

theme of Tom's layout. But in Gn15, you're not just recreating history—you're creating stories. And that's where the real magic lies.

Tom's Take: No Rules, Just Pure Creative Fun

For Tom Yorke, the greatest virtue of Gn15 is *freedom*. You're not bound to a prototype, rulebook, or rivet-counting. You can toss all that out the window if you'd like. Gn15 is about personality, charm, and imagination—not perfection. Tom's work proves that creativity, improvisation, and simply enjoying the journey are not only acceptable—they're the heart of the hobby. His structures are full of expression; his scenes unfold like mini-movies and his builds? They're unmistakably Yorke.



Big Personality, Small Space

Gn15 offers plenty of scenic impact without necessarily needing a massive layout. It's perfect for those who love to detail structures, scenery, and character-driven vignettes—but don't have a spare garage to build in. With Gn15, you can flex your creative muscles on a manageable footprint.

Your Layout, Your Rules

Gn15 isn't for everyone—but if you're looking to shake things up and rediscover the sheer *joy* of building for fun, it might be just what you need.

As Tom puts it: *"The only limit in Gn15 is your imagination."*

Coming Soon: Part 2 – The Locos and Rolling Stock

And guess what? He's not done yet!

If Part 1 was about setting the stage, Part 2 is where the show begins. Tom's next segment will focus on the sometimes odd and endlessly inventive world of Gn15 locomotives and rolling stock in May 2025 (exact date to be determined). You'll see how he transforms HO mechanisms into narrow gauge workhorses and conjures rolling stock with as much personality as the scenery they roll through.

Get your imagination ready

Thomas Yorke's work reminds us that model railroading does not have to be rigid or rule-bound. It can be playful, artistic, and even downright whimsical—and still be rewarding. Whether you're a seasoned scratch builder or just beginning to explore new scales, there's something in Tom's approach that will ignite your creativity.

So, stick around, New Tracks friends—you'll love what's around the bend!

By Tom Farrell

Host, *New Tracks Live*

The On30 Rustic Buff & Old Gothic Railroad

NEW TRACKS MODELING

MENTORING SCHOLARSHIP

Thanks to our Donors! Greetings to our Applicants!

Thanks to the generosity of our individual and corporate donors, we'll be awarding three \$2,000.00 scholarships for the 2025-2026 academic year to young modelers studying Science, Technology, Engineering, Arts or Mathematics (STEAM) on the undergraduate level. The scholarship is available for those who will be attending either a two or four year college, university or trade school.

We've been doing our best to get the word out by having presence at train shows and encouraging clubs and organizations to publicize the scholarship. We've also partnered with several manufacturers who have agreed to include information about the scholarship in their products. We're happy to report that we've received several applications to date, and are expecting at least a couple more as prospective applicants finish their spring exams.

You've been a great help, and you can help us do more!

Every reader of this newsletter can help get applicants for our scholarships. Promoting scholarship availability and reaching out to college students can be done through various effective methods. Here are some suggestions:

1. Your local train group. Please continue to help spread the word with your local train club or group:

- Make an announcement at your next meeting
- Include a message in your newsletter
- Mention the scholarship at your next ops session

2. Your local hobby shop. Ask the owner if they can share information about the scholarship on their web page or physically in their store. We'll provide flyers and artwork to help make this happen. Just ask (email below).

3. Springtime local train fairs/shows. There's always an information table with news about future shows and events. Ask the organizers if you can leave

scholarship flyers on the table and ask them to help publicize the scholarship in their advertising.

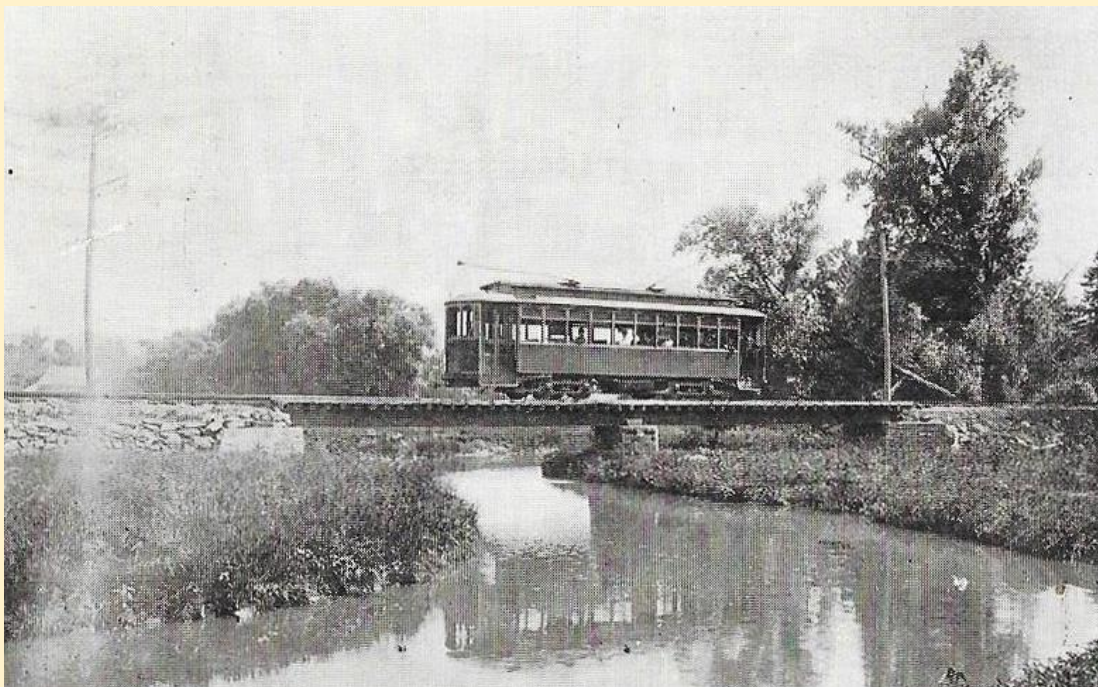
4. Local schools. If you have a local high school, ask if you can speak with a guidance counselor and make them aware of the scholarship. Direct them to our website. If there's a local college (2-year or 4-year) or trade school, speak to the folks in financial aid and let them know about us.

We're coming down to the wire on this year's application deadline (June 1) so please make sure that no student is left out. We're already planning for the 2026-2027 Scholarship year, so stay tuned.



Please Help Our Next Generation of Model Railroaders
More information can be found at:
newtracksmodeling.com/scholarship

If you have any questions, please contact Bob Davidson at
NTMMS@newtracksmodeling.com



NEW TRACKS MODELING

Where Mentors Help Modelers Build



LIVE WEEKLY On YouTube & Zoom

REGULARLY SCHEDULED PROGRAMS:

- Scratch Builder's Corner by Martin Brechbiel, MMR
- My Build by Chris Course (Monthly)
- The On30 Rustic Buff & Old Gothic by Tom Farrell
- Narrow Gauge Modeling by Steve Sherrill
- News & Views – All Scales by Invited Guests!

**EVERY
WEDNESDAY
7:00PM – 9:00PM
(EASTERN)**

**Subscribe on our website to receive links to the show:
www.newtracksmodeling.com**

Regularly Scheduled Segments on New Tracks Modeling Scratchbuilder's Corner

by Martin Brechbiel, MMR (Martin.Brechbiel@newtracksmodeling.com)

Scratchbuilder's Corner demonstrated the use of a basic Huff 'n' Puff box car kit as raw materials to build up the DeKalb Western caboose pictured in Beebe's "Mixed Trains Daily" in April.

This regularly featured part of the New Tracks Modeling show presents aspects of scratchbuilding (and kitbashing) primarily with wood as the medium to build structures and rolling stock, but this includes the use of other materials such as styrene, brass, resin, and other casting materials as appropriate.



Intentions here are as always to teach & share techniques and "tricks" that can be adapted into your scratchbuilding projects working from simple projects through those of increasing complexity.



New Tracks Modeling “MY BUILD” 2025

by Chris Coarse (railrunner130@hotmail.com)

Model railroading is about sharing and the monthly MY BUILD is your opportunity to share and show off your build with the world. Trains, structures, or boats, it doesn't matter. It doesn't have to be your latest build. Heck, it could even be something you found at a yard or estate sale and just thought was neat. Or, maybe if you're stuck on something, need a different technique, or are stumped on how to proceed on a project. This is a good part of the show to ask questions. Please ask. We can help.

Every other month we have a “theme.” These are not rigid. If you can find something to share that fits in a category, regardless of being “outside the box”, that is ENCOURAGED!

The next MY BUILD will be on May 14th

Submission deadline – May 25th

The Topic for this MY BUILD will be →

FREE-FOR-ALL (ANYTHING GOES)/

Elections for future challenge themes

E-mail theme ideas to railrunner130@hotmail.com

UPCOMING MY BUILD CHALLENGES/SHOWS

June 25th “Water”, waterfronts, boats, bridges, etc.

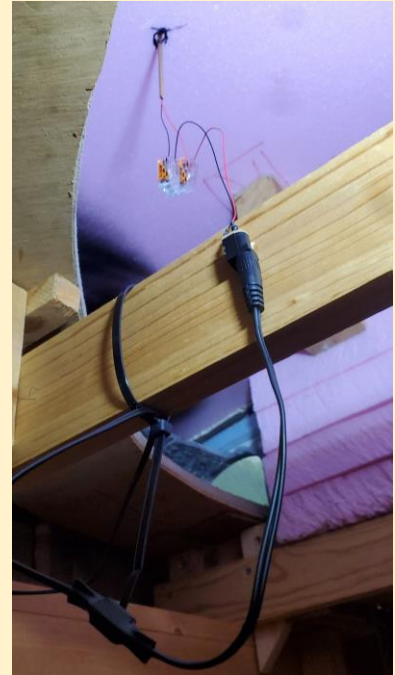
Submission deadline – June 18th

July 23rd FREE-FOR-ALL (ANYTHING GOES)

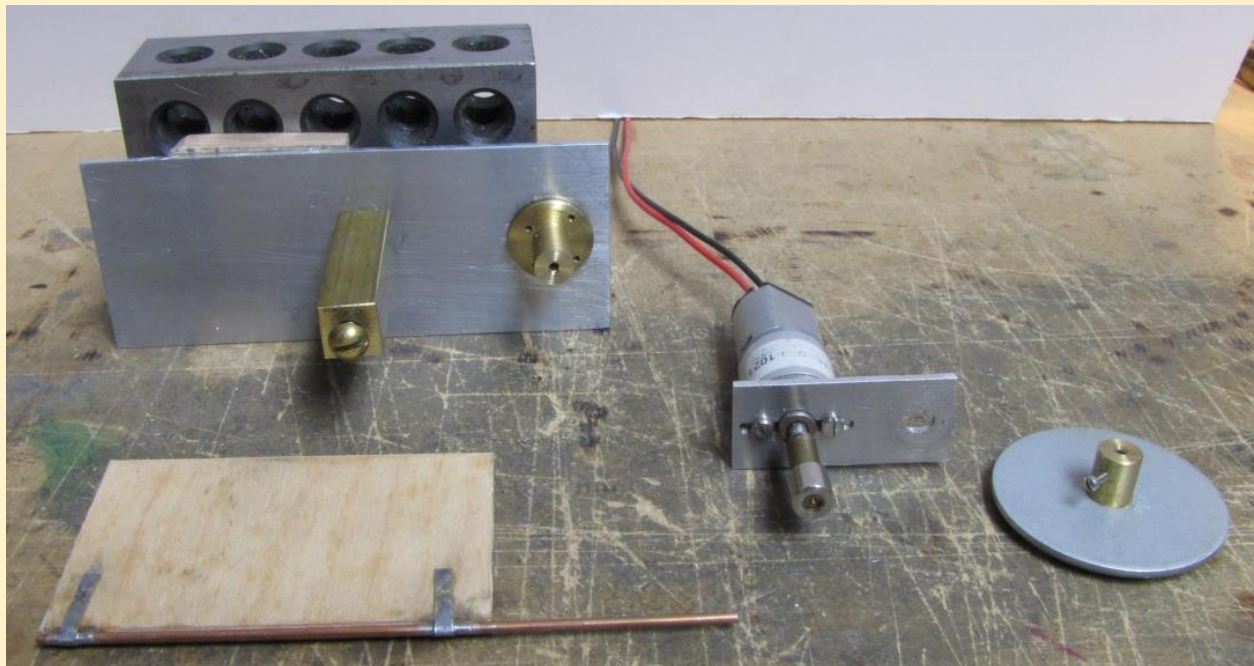
Aug tbd

Selected Photos from the April MY BUILD

From Greg Cassidy



From Bernd Fanghanel



From Jeffrey Jordan



What's to Know About the Scales We Model In?

“What is O scale or N scale all about? Does anyone really model in S scale? Can I really scratchbuild a model in N scale?” Your scale of choice may be G, O or O Hi-Rail, S, HO, or N, and there are others yet that modelers choose to build in today. We frequently know little about the details of other scales being possessed of misinformation, or simple mythology.

New Tracks Modeling is running monthly segments on G, O, O Hi-Rail, S, S AF/Hi-Rail, HO, and N scale hosted by knowledgeable, talented modelers in each scale. These modelers will try to answer your questions, present information about what is possible to accomplish, while presenting what a modeler considering a scale might need to know.

Volunteers Working on the Real EBT Railroad

We had an excellent and very productive work day working in Three Springs to brush cut a hillside which is across from the swimming pool (the area where EBT runs handcars and speeders for Three Springs' annual Memorial Day Weekend festival).

Assisting yesterday were: Al Gallo, Joel Myers, Mark Reese, Daniel Lane, Todd Johnson, Larry Fuchs, Phil Coyle, Rick Poletto, Dave Padula, Dan Horting and Jack Fornadley. Many thanks, gents!

We were assisted by having a chipper to dispose of the large amount of stuff that got cut.



Loading the chipper - March 27th (G. Tucker photo)

An ambitious bunch of eight of our colleagues worked in Saltillo.

They divided themselves up into two teams. One team set about cutting bolts and breaking joints, working southward and reaching a point where the north switch from the station lead meets the main.

The other team cut brush northward for quite a distance.



Cutting bolts - March 19th (Jack Fornadley photo)



Kudos to those involved: Al Gallo, Larry Fuchs, John Widmeyer, Justin Santichen, Phil Coyle, Jack Fornadley, John Quinn and Daniel Lane.

Saltillo bolt cutting - March 19th (Jack Fornadley photo)

Saltillo track work on April 3rd

Yesterday, a crew of seven of us waited for Mother Nature to finish dropping water on us, after which (at about 10:00 AM or so), we went to work in Saltillo

We brush cut to a point about 3,000 feet north of the station site (just a guess on the distance).

We also broke apart joints to a point not quite that far north of the station.

Assisting yesterday were: John Quinn, Rick Poletto, Al Gallo, Larry Fuchs, Daniel Lane and Phil Coyle. These fine gents comprised an energetic and capable team. We got a lot done.

I attach as proof that photographers actually do some work.



Al Gallo separates a joint - April 3rd (G. Tucker photo)

Upcoming Railroad Prototype Modeler Events

Hindsight 20/20 is a virtual RPM, gathering on the Zoom platform. These occasional events have been all-day events featuring ten 30-minute clinicians on a Saturday every 6 to 8 weeks on prototypes and modeling. We also hold Wednesday Night Hindsight events featuring a single clinician, every 3-5 weeks. Registration is required but there is no event cost and is open at Speedwitch media (<https://speedwitchmedia.com/>).

Please register WELL IN ADVANCE

RPM Carolinas: School of Railway Prototype Modeling – May 3-4, High Point, NC – the 2025 event is set for the May 3rd weekend.

Railway Modellers Meet – May 23 – 25, Vancouver, BC. Check their website for updated details.

New England/Northeast RPM – May 30 – June 1, Springfield Sheraton, Springfield, MA. In association with the Amherst Railway Society.

BAPM 2025 – The San Francisco Bay Area Prototype Modelers Meet – Saturday June 21, St. David's School Hall, Richmond, CA

Central Pennsylvania Shortline RPM – July 18-20, Bricktown Museum, Mount Union, PA

St. Louis RPM – July 24 – 26, Gateway Convention Center, Collinsville, IL

Mid-Atlantic RPM – September 11-14, Double Tree by Hilton at BWI

Anthracite Railroad Modelers Meet – September 19 – 21, Reading Railroad Heritage Museum, Hamburg, PA.

Colorado Rail Proto Meet – September 27 & 28, Island Grove Event Center, Greeley, CO

RPM Naperville – October 17 – 18, Northern Illinois University conference center, Naperville, IL

Bridgetown Railroad Prototype Modelers Meet – October 25, Holiday Inn Portland – Airport, Portland, OR

Train Show Schedule

Great Scale Model Train and Railroad Collectors Show

May 3rd and 4th, 2025 Sat. 9am-5pm; Sun 9am-3pm

Admission Sat & Sun \$12; Sun \$10

Maryland State Fair 2200 York Rd. Timonium, MD 21093

[Click here for complete map and directions from all](#)

[points; https://www.gsmts.com/](#)

<https://sites.google.com/view/greatscalemodeltrains/how>

O Scale 2 Rail Indianapolis Train Show

September 18-20, 2025

September 19, 2025 3pm-7pm

September 20, 9am-3pm

La Quinta Inn & Suites Indianapolis South
Near the intersection of I465 and Emerson Ave.

Indianapolis, IN

O Scale 2 Rail/P48, Narrow Gauge/On30, 3 Rail Scale

Website: <https://www.indyoscaleshows.com>

Phone: (833) 410-3872

**Send us your train show
Information!!!!**

Big Bend Model Railroad Association

T-TAK
N/O Scale Modular Railroad

2 day Show!
Sat & Sun

T-TAK-Z
Z-Scale Modular Railroad

34th Annual

Tallahassee Model Railroad Show and Sale

June 28th & 29th 2025 at the North Florida Fairgrounds

Find us on Facebook

Notify Me!!

The 27th National Model Trolley Meet

Sponsored by the

EAST PENN TRACTION CLUB

Philadelphia, Pennsylvania, USA (www.eastpenn.org)

MAY 15, 16 & 17, 2025

Meet Contest Theme:

“Contemporary Light Rail Vehicles & Trolleys”
(post 1976 original construction)



- ☞ *Manufacturer and Dealer Tables*
- ☞ *Awards for Modules & Displays*
- ☞ *Operating Layouts (All Scales)*
- ☞ *Pop-up Clinics*
- ☞ *Model Contests*
- ☞ *Silent Auction*
- ☞ *Evening Presentations*

To be held at the

Allentown Fairgrounds

Agri-Plex Charles Hall

17th & Chew Streets

Allentown, PA 18104

Free Parking on Site

www.allentownfairpa.org

Registration \$23 in advance, \$25 at the door.

See the back for more information.

**Visit www.eastpenn.org for the latest meet info
or to Register Online!**

**Saturday
August 9, 2025**



0 / Proto48 / On3 / On30



Location: Strasburg PA Fire Company,
203 W Franklin St, Strasburg, PA 17579

Time: 9 a.m.-1 p.m.

Dealers entry 7:30 a.m.

Setup Friday evening, 4:00-6:00 p.m.

Doors will be closed at 6:30 p.m., NO exceptions!

Admission: \$7

- Active military Free with ID.
- Wife and Children under 12 free

Table Cost: \$35 for first table
Additional tables \$30 each

**Amish
Style
Cooking**

Future Dates

| | | | |
|-------------|----------|--------|---------|
| 2025 | - | Aug. 9 | Oct. 11 |
| 2026 | April 11 | Aug. 8 | Oct. 10 |
| 2027 | TBD | TBD | TBD |

Sponsored by: Rich Yoder, 484-256-4068

For table registration or to pay for admission in advance, please fill in the form below, tear off along dotted line and mail with payment to:

Rich Yoder
625 Anne Dr.
Wernersville, PA 19565

Registration

Admission **\$7** per person x _____ = _____

Table cost (does not include admission) ... **\$35** first table x _____ = _____

\$30 per additional table x _____ = _____

Total _____

Please make check
payable to:
Rich Yoder

Name(s) _____

Address _____

City _____ State _____ ZIP _____

Phone number (_____) _____ email _____

2025 HARRISBURG Narrow O Summer Meet

On3 – On30 – On2 - On18

A two day event focused on anything and everything O scale narrow gauge.

Friday June 13 (11:00 to 6:00)
and **Saturday June 14** (9:00 to 3:00)

LOCATION: New Hope Church
584 Colonial Club Drive
Harrisburg, Pa. 17112

Guest admission: \$20 for both days – *Spouses and children under 12 free.*
Clinics and Maker Spaces demos on going throughout the event.

"The best train show food in North America"

Due to church rules and insurance restrictions: NO alcohol will be allowed

Vendors: For table information, availability, admission and fees
please email us at millcreekrr@yahoo.com for detailed information.

For updated information on the event, including the vendor list, Clinic topics, Maker Space presenters
and layouts along with any additional information or updates can be found on the Meet's
Facebookpage under the title "Harrisburg Narrow O Summer Meet".

Most attendees have used either the **Quality Inn Harrisburg-Hershey Area**,
200 N Mountain Rd, Harrisburg, PA 17112 (717) 540-9339 or **The Ramada Inn**,
300 N. Mountain Road, Harrisburg, Pa. 17112 (717)-461-9602 in the past and
found it to be a clean, friendly and a good value. Best of all they are located
only .9 of a mile or about 3 minutes from the New Hope Church venue.

The largest all O scale Narrow Gauge event in North America

NMRA 90th ANNIVERSARY CELEBRATION EVENT
NMRA MIDWEST REGION EVENT

Labor Day Monday, September 1, 2025 11 A.M. To 2 P.M.



We, the Midwest Region, with the support of the Central Indiana Division, are hosting a 90th NMRA Anniversary celebration event in Carmel, Indiana on Labor Day, Monday, September 1st, 2025.

This event shall take place at the MCL Restaurant, located at 1390 Keystone Way in Carmel, Indiana, on Labor Day 2025 beginning at 11 A.M. September 1 is the actual anniversary day.

Fred Soward, Central District Director and National AP Chairman, Ray Pershing shall be our keynote speakers.

After the conclusion of remarks and lunch, you are all invited to visit a magnificent masterpiece of a world-class model railroad! It is "Rail Xpress (RxRR)" owned by Master Model Railroader #700, Dan Hinel. (address available at event—15 minute drive)

Don't miss this one chance, one-time only event!



33rd Annual Model Train Show

O Scale WestPO Box 60574
Palo Alto, CA 94306-0574

650-218-5762

oscalewest.com**2025****May 23-25, 2025**

Friday - Saturday - Sunday

May 23-25, 2025 at the Hyatt Regency Hotel in Santa Clara, California

Hi Folks!

O Scale West 2025 is on track for May 23-25, 2025! You can register and rent table rentals for the meet on-line as well as make hotel room reservations on-line. (See table below)

Activities include buy/sell, clinics, model contest, on-site operating layouts, home and club layout visits, a company store, silent auction, and white elephant sales tables.

The meet location is in the heart of Silicon Valley - Santa Clara, CA - in the San Francisco Bay Area.

O Scale West includes S scale and all scales narrow gauge in addition to all scale 1:48 trains and associated items.

The O Scale West meet has been held every year since 1991 except for two years that were missed because of COVID precautions. As a result the long-term organizing committee is well-versed in putting on the event - issue-free fun is one of the things that makes O Scale West a favorite for many people.

So make your plans now to come to O Scale West!

Questions? Please email info@oscalewest.com

Rod Miller, Chairman. *O Scale West*

Meet at a glance

Admission and Table Rental

| | | | |
|----------------------|---|--------------------|------|
| | Entire Meet | | \$50 |
| Registration | Sunday Only | Register at door | \$25 |
| | Significant others, Spouses and Kids under 18 (yours or not) | | Free |
| | Table size 30" x 72" | Each table | \$50 |
| Table Rental | | Electrical hook-up | Free |
| Maximum of 8 tables. | Registration required to rent tables. Helpers must pay registration fees. Limit 1 Helper per table rented, maximum of 4 helpers. Terms & Information for Table Renters | | |

Mail in/Walkup

[Download the 2025 Registration Form](#)

On-line

[Register on-line](#)

Hotel Information

| | |
|---------------------|--|
| Hyatt Regency Hotel | 5101 Great America Parkway Santa Clara, CA 95054-1118 (San Francisco Bay Area) |
| Online | Hyatt On-Line Reservations |
| Reservations | National Registration: 1-800-421-1442 Hotel Direct: 1-408-200-1234 (ask for the O Scale West group rate) |
| By Phone | |

\$169.00 per night + tax, when made prior to May 4, 2025.

Copyright © 2019-2025, O Scale West. All rights reserved.

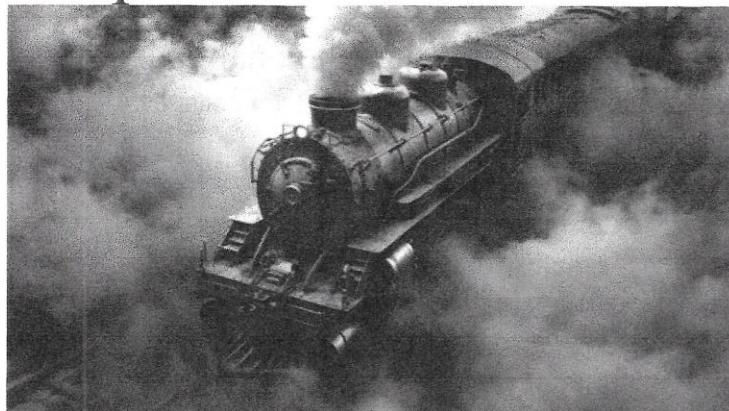
Updated: 11 February, 2025

More information:
info@oscalewest.com

2025v4b

[Privacy Policy](#)

Indianapolis O Scale Show 2025



2 Rail O Scale Train Show

Friday September 19, 3:00 to 7:00 PM

Saturday September 20, 9:00 AM to 3:00 PM

La Quinta Inn & Suites Indianapolis South, 465 and Emerson Ave.

O Scale 2 Rail/P48, Narrow Gauge/On30, 3 Rail Scale welcome

Facebook: <https://fb.com/indyoscaleshows>

Website: indyoscaleshows.com

Email; indyoscaleshows@gmail.com

Phone (317) 435-8378

Check back regularly for more details.

✂ PLEASE PRINT LEGIBLY

DETACH AND RETURN THE LOWER SECTION OF THIS FORM WITH YOUR PAYMENT

Name: _____

(Exactly as it would appear on badge)

Registration (2 day) \$20.00 \$ 20.00

Spouses and children under 18 free

of 30 x 72 tables @ \$40.00 = \$

\$50.00 after Aug 19 th

Business: _____

(Exactly as it would appear on badge)

Spouse Name: _____

(Exactly as it would appear on badge)

Number addl. Registrants X \$20.00 = \$

(List Names below, use back if necessary)

MAILING ADDRESS

CITY

STATE

ZIP

Name: _____

(Exactly as it would appear on badge)

Phone: () -

Name: _____

(Exactly as it would appear on badge)

E-Mail: _____

Make Checks Payable to
Mail to

Hanson Rail Service, LLC
3202 Saint Paul Street
Indianapolis, IN 46237

Email

indyoscaleshows@gmail.com

Electrical needed for table(s)? Yes No

TOTAL AMOUNT ENCLOSED = \$

Delaware Seaside Railroad Club

MODEL TRAIN & TOY SHOW

Saturday, May 3, 2025
9 am - 2 pm

HOPE CENTER, OCEAN VIEW, DELAWARE

97 Central Avenue, Ocean View, Delaware 19970
Intersection of Route 26 Atlantic Avenue and Central Avenue

ADMISSION \$6.00 - Children 10 & Under FREE

Vendor Sales Tables • Operating Train Layouts
Refreshments • Door Prizes



For More Information, Visit Our Website: www.delawareseasiderailroadclub.com

A Non-Profit 501 (c) (3) Educational Charitable Organization • Contact: Skip Lee @ 443-618-6866



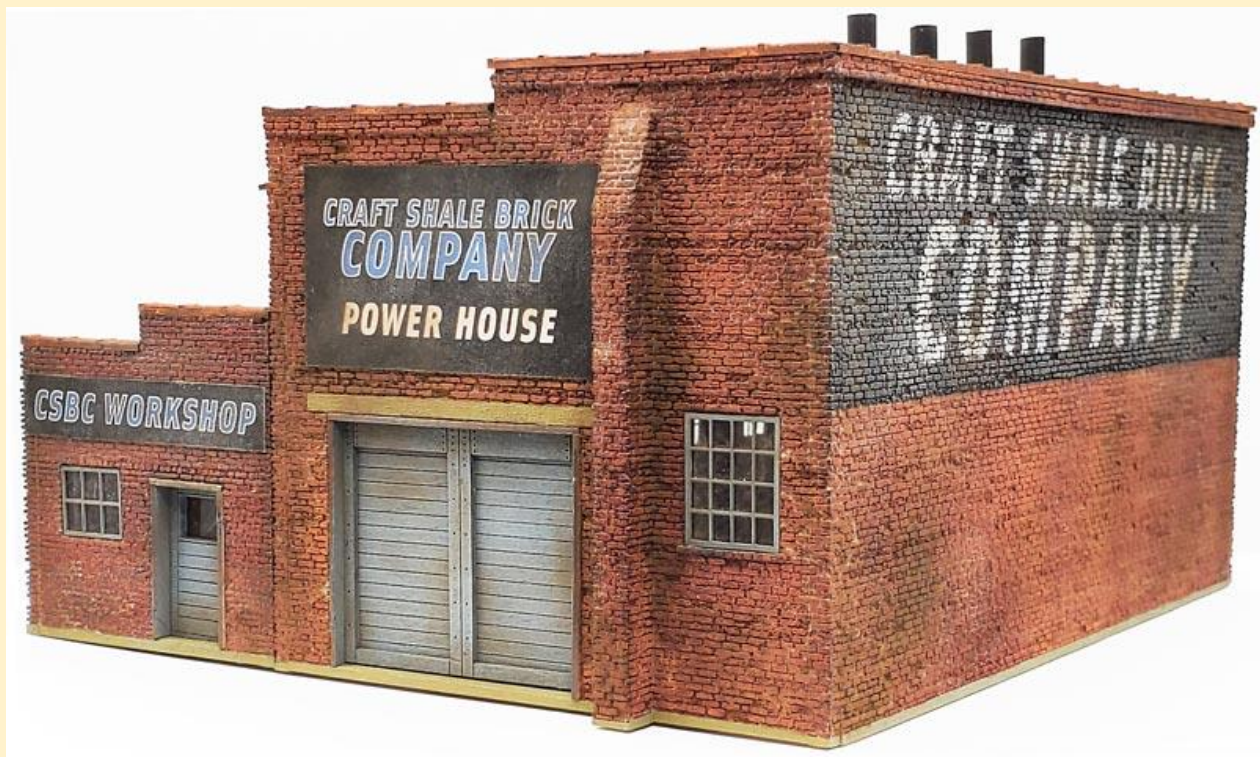


Vendor's Corner



New HO Scale Kit

Craft Shale Brick Co. - Power House & Workshop



Based on the Medora Shale Brick Company in Medora, Indiana.

The Medora Shale Brick Company was founded in August 2, 1904 and began producing brick in 1906 from a site constructed southwest of the town of Medora adjacent to the Baltimore and Ohio Railroad line. The hills surrounding the site contained a ready supply of clay for brick production.

Kit comes with two separate buildings, one with Old Brick and one in newer Aged American Bond Brick. Intended to be glued together, but can be built and placed separately.

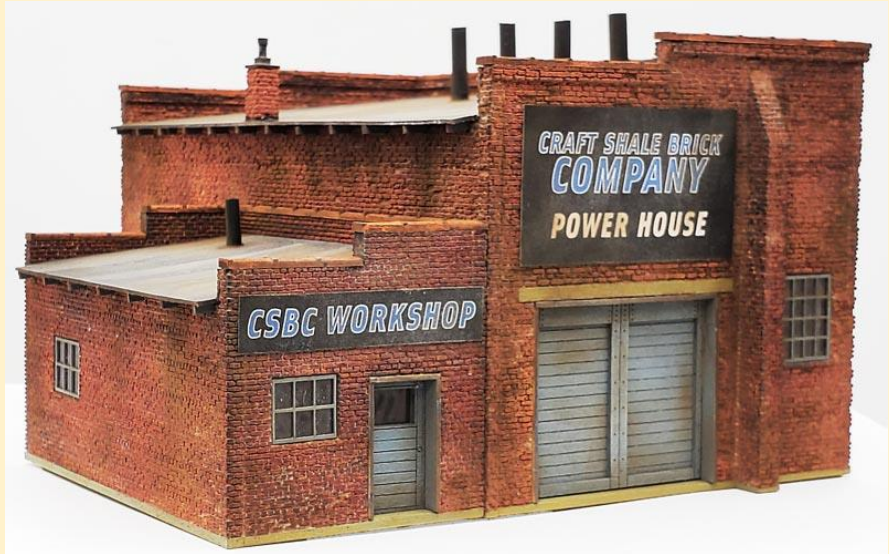
Dimensions:

6.25"W x 7.25"L x

3.875"H

Kit Includes:

- 3D Engraved Aged American Bond Brick Walls
- 3D Engraved Aged American Bond Brick Corners
- 3D Engraved Old Brick Walls
- 3D Engraved Old Brick Corners
- 3D Engraved Old Brick Tapered Pilaster
- Laser Cut Wood Doors & Trim
- Laser Cut Windows
- 3D Engraved Terra Cotta Coping
- Sign Stencil
- Printed Signs
- Old Brick Chimney w/Pipe
- 4 Large Roof Pipes
- 1 Small Roof Pipe





Rusty Rails New Castings

For the HO scale crowd we have 1 item this month.

RRFS-H-05 - Here is a new set of figures that are 3d printed. The set includes 7 figures; four men and three women. There will be more figures in the future. The figures come unpainted.



[Click here to check it out](#)

RRFS-H-04 - This is last month's set of figures that are 3d printed. The set includes 7 figures. There will be more figures in the future. The figures come unpainted.

[Click here to check it out](#)



For the O scale crowd we have 5 items this month.

RRPR-O-01 - Here is a 3d printed figure called 'Slim'. Once you see his picture you will understand his name. Figure comes unpainted.

[Click here to check it out](#)



RRPR-O-04 - Here is a 3d printed figure called 'Painter Paul'. This guy has a brush and will fit in any shop. Figure comes unpainted.

[Click here to check it out](#)



RRPR-O-05 - Here is a 3d printed figure called 'Fireman Fred'. This guy will be great in a engine house. Figure comes unpainted.



RRPR-O-12 - Here is a 3d printed figure called 'Miner Mike'. You can put him in any mine scene. Figure comes unpainted.



RRJP-O-16 - Here is a great junk pile at can go out in a field or behind a shop. A bunch of old motors, drive train parts and radiators. Casting come unpainted.

Rusty Rail purchased a new 3d printer and you will see more 3d products in the future releases.

Expanding the Frenchman River Fuel Depot: A 'Watch Me Build' Project by Tom Farrell

Model railroading has always been about creating small, character-filled scenes that make a layout feel truly alive. When I built the Frenchman River Model Works O/On30 1:48 Scale Fuel/Oil Tank kit during my April 16, 2025, "Watch Me Build" session, it instantly captured that spirit. Designed by the legendary Thomas Yorke, this beautifully detailed resin kit adds a real sense of industrial grit and authenticity to any scene—whether it's fueling up locomotives at a busy terminal or, in my case, serving as part of the Eberwein Coal Mine scene I'm currently building.

This resin kit depicts a vintage-style fuel or oil storage tank with an estimated capacity of 8,000 U.S. gallons—ideal for capturing the look and feel of early-to-mid 20th-century industry. It features finely cast rivet detail, a realistic concrete base, and a straightforward construction process that makes it accessible to modelers of all levels. Whether used as a single, stand-alone tank or combined with others to form a larger tank farm, it brings versatility to any industrial scene. With a footprint of just 3 inches in diameter and 2.75 inches tall, the model fits comfortably into a wide range of layout designs.

As an added incentive for modelers, Frenchman River Models (www.frenchmanriver.com) is offering a 20% discount and free shipping using the promo code NEWTRX, lowering the price from \$34.95 to an appealing \$27.96.

Coming Up: Part 2 of My "Watch Me Build" – Live on May 7, 2025

I plan to add a concrete block pump house adjacent to the fuel tank to further enhance the Frenchman River Fuel Depot's realism and operational function. This small but vital structure will represent the equipment needed to pump fuel from the tank to locomotives. I will use Monster Works O Scale Concrete Block Basswood Sheet (12" x 4" x 1/8") for the pump house walls. The structure will feature a weathered flat aggregate/tar paper roof, a steel door, and subtle details like vents and service hatches. It will be positioned close enough to the tank to suggest a direct underground piping connection, helping create a believable fueling operation scene.

To complete the scene, I'll add a flexible fueling hose to authentically represent the gear used to service oil-burning steam locomotives. I'll model it using heat-formed tubing or soft rubber hose, allowing it to drape naturally from a standpipe or pump connection. A detailed fueling nozzle at the end will add the final touch of realism. This small addition will help bring the whole setting to life, allowing working locomotives on the mining scene to "take on fuel" before shuffling hopper cars around the mining area.

This project demonstrates how small structures and operational details can tell a larger story through one compelling scene. I encourage fellow modelers to explore www.FrenchmanRiver.com for their HO, S, O, and 1/24 scale structures and detail parts. In addition, Frenchman River exclusively offers Thomas Yorke's museum-quality designed resin kits.



WATCH ME BUILD

New Tracks Modeling Live!



- Exclusive to New Tracks -
Receive a 20% Discount on this Kit
Use Code: NEWTRX

"Watch Me Build"
NEW TRACKS LIVE
May 7, 2025, 7:00 PM ET

Sponsored by

Frenchman River Model Works

New Tracks Mentor (NTM) Tom Farrell is expanding his Frenchman River Model Works Fuel Depot scene in an upcoming "Watch Me Build" session scheduled for May 7, 2025, at 7:00 PM Eastern. In this new segment, Tom will add a concrete block pump house adjacent to the fuel tank, further enhancing the Fuel Depot's realism and operational depth.

Model railroading has always been about crafting small, character-rich scenes that make a layout come alive. When Tom built the Frenchman River Model Works O/On30 1:48 Scale Fuel/Oil Tank kit during his April 16, 2025 "Watch Me Build" session, it perfectly captured that spirit.

Designed by the legendary Thomas Yorke, this finely detailed resin kit adds a strong sense of industrial grit and authenticity to any setting—whether serving as part of a busy locomotive terminal or, in Tom's case, integrated into the evolving Eberwein Coal Mine scene.



www.FrenchmanRiver.com

From Ted DiMone – Andora Forest Scene



MODEL RAILROAD RESOURCE LLC 3D DIVISION



The M5R24 is the same grouping of five Airchimes as in Model M5, except that bells 2 and 4 have been reversed on the base for greater warning coverage to the rear.



Whistle sign with and without post. Based on Pennsylvania railroad signs, but used on many other eastern roads. Your choice of sign only or sign attached to pole. The sign only will accept a 3/64" wire. 12 to a package. (Note images are highly magnified)



Caboose Steps Southern Railway Style

New Items!
O Scale

See all our new products at
modelrailroadresource.com/WP

The Model Railroad Resource LLC 407 E Chippewa St Dwight, IL 60420 815-263-2849



Fancy Standard Globe Options

Five Street lights. Common North American-style street lights used in many communities. Fit popular modeling eras 1890s to present as they are now they are back in historic districts, but made from metal. The standard globe was found all over the country. The fancy globe was measured from an actual top in Elmhurst, IL.

Choice of globes, standard or fancy. Package includes five poles, five globes, five LEDs and five 9V to 14V resistors.

Custom Printing

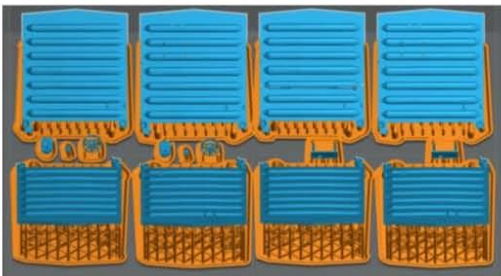
From Your Files

Model Railroad Resource 3D Division

<https://modelrailroadresource.com/WP/custom-resin-printing/>



Erie Express Trucks: The Erie Railroad used these General Steel Casting trucks under their milk cars and Caboose. Files from trainkitchen.com.



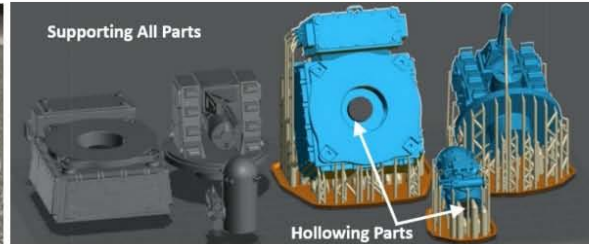
We can print the following:

- Parts ready for priming and painting
- Parts ready for casting/wax molds
- Parts ready for direct burnout
- Build Volume of 218.88 × 123.12 × 250 mm
- Many Resin Choices*:
 - Machinable Black / Grey
 - Castable for Burnout (Blue) **
 - Standard Grey

From your files \$25.00** per platen 218.88 × 123.12 × 250 mm (8.6 × 4.8 × 9.8 in)

Plus one time support charge per file \$45/Hour.

We guarantee the finished product using our supports***



MK 15 - Phalanx Close-In Weapon System (CIWS) Printed for client from files by 3d_molier International.



Above is a set of custom parts built in castable resin, needing no molds, direct to burn out for beautiful brass castings.

Below are diesel locomotive seats. Files from trainkitchen.com



*Many custom resins available for your project.

**Blue casting is \$35.00

***We may start the weeding process on delicate models before curing.

The Model Railroad Resource LLC 407 E Chippewa St Dwight, IL 60420 815-263-2849

What's Been Recently Added to the New Tracks Modeling YouTube Channel!

April 2

Box car caboose conversion

<https://youtu.be/y3X5OesHXYD>

Martin builds a Dekalb Western caboose from an old Huff 'n' Puff box car kit

Agnew Station

<https://youtu.be/Ybmh8c8V Ws>

Scratch building the Agnew Station, Part 2.

Caboose

<https://youtu.be/FalXwtzHt1Q>

Nice modeling and automation for a layout.

Fr Ron's farm house

<https://youtu.be/6sMXOjOHvbg>

Father Ron completes the build of a model of his grandmother's farm house.

Brennan's substation kit

<https://youtu.be/YQSQSTBMWOW>

A new kit, a small electrical substation, from Brennan's Model Railroading - a reissue of a Tom York kit.

April 9 links

S Scale Trackwork

<https://youtu.be/-pd7rwf6EmE>

Jamie Bothwell demonstrates how, with an S scale #10 turnout assembly fixture from Fast Tracks, you can build turnouts right at your workbench in about an hour—no special skills needed. This system lets you create a virtually unlimited supply of smooth, precise, and great-looking trackwork whenever required. Fast Tracks has been perfecting these tools since 2003, ensuring modelers can build reliable, high-quality tracks confidently and efficiently. Fast Tracks assembly fixtures help you produce tracks that are permanently in gauge, NMRA compliant, and free of derailment issues. Each fixture allows you to build both right- and left-hand turnouts, all while working comfortably at your bench. The results rival professional-level craftsmanship and eliminate the frustration that comes with poorly built track.

Full Circle Models

<https://youtu.be/BaDirgttLWg>

An interview with Chris Bohn of Full Circle Models manufacturing On30 products.

Single Stall Engine House

<https://youtu.be/aDCbSAvvIXc>

Tom Farrell is back at his workbench, bringing another Thomas Yorke masterpiece to life from Frenchman River Model Works for a New Tracks Live “Watch Me Build” segment. Farrell constructs the O/On30 1:48 scale Single Stall Engine House from Frenchman River Model Works (<https://frenchmanriver.com>), a finely detailed resin kit initially designed by the legendary Thomas Yorke. With his signature craftsmanship, creative weathering methods, and sharp attention to detail, Farrell transforms this already impressive kit into a museum-quality showpiece. Farrell shares many practical tips, techniques, and modeling wisdom as he builds, offering inspiration and guidance for hobbyists at every level. Whether you’re new to the craft or a seasoned builder, his approachable style and thoughtful explanations make this project both engaging and educational.

History of Scale and Gauge

<https://youtu.be/w2Rthsb6EsU>

David Shultz clarifies the differences between scale and gauge in this segment. In model railroading, scale refers to the proportion or ratio of the model to the real-

life train. For example, O scale is typically 1:48, meaning one inch on the model represents 48" on the actual train. Gauge, on the other hand, refers to the distance between the rails of the track. While scale determines the size of the train, gauge determines what kind of track it runs on. For instance, two models can be the same scale, but run on different gauges to represent standard or narrow gauge railroads.

April 16 links

Caboose

<https://youtu.be/pw6nrZ4unxM>

A model boat moves around a small harbor and forms a wake as it moves.

Agnew Station Part 3

<https://youtu.be/2GDp89SLY4E>

Part 3 of Agnew Station, this time featuring 3D printed furniture and floor and wall prints from PowerPoint.

Offices of Deckard and Batty

<https://youtube/i6cCCWfKtel>

Martin starts another building, this one with a recessed front door.

O Scale Oil Tank

<https://youtu.be/Xv11hchxQ7Y>

This is a simple kit to build so the video focuses on painting and weathering

East Coast Circuits

<https://youtu.be/peh2vvMJZ4k>

East Coast Circuits specializes in lighting for vehicles, buildings, and signals.

April 13 links

Caboose

<https://youtu.be/7lOtKnKh0hM>

Coupler designed to eliminate slack and movement between cars.

Agnew Station Part 4

<https://youtu.be/66FV28DQQhY>

Completion of Agnew Station including lighting and the roof.

Offices of Deckard and Batty Part 2

<https://youtu.be/9QR7Jd7Llg0>

Completion of the assembly. Paint and weathering next time.

My Build

<https://youtu.be/KKOvTO3X1Rs>

Models that move this month.

National Capital Trains

https://youtu.be/xa_CToK8ySs

An interview with the owner of National Capital Trains, specializing in N scale.





www.gsmts.com

PROUD SPONSOR OF *The*

NEW TRACKS

MODELING

**STEAM SCHOLARSHIP
PROGRAM**